

SPECIFICATION & FEATURES

FLAT BRACKET FAMILY MULTI-BOXES

DESCRIPTION:

Orbit's exclusive Flat Bracket Family features a host of brackets for between stud or kick applications. With the industry's only kick bracket that fits a 5" square box, Orbit's new family is also the most versatile!

CERTIFICATION:

UL file E310661, conforms to UL514A

FEATURES:

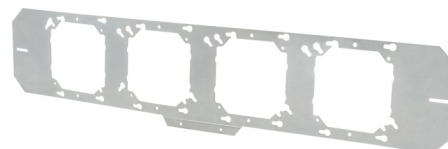
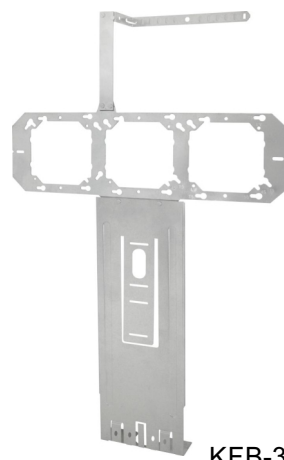
- Compatible with 4", 4-11/16" and 5" square boxes
- Mounting holes allow 4" rings to mount on all size boxes or on their own for low voltage applications

KFB-318, KFB-418:

- Measures at a standard height of 18"
- Up to 6" Back Support for additional stability
- Bottom tabs allow for mounting inside of studs
- Bendable bottom center mark indicates bracket placement after drywall installation
- Pre-installed CS-CJ6 for cable support (KFB-318)

FB-3, FB-4:

- Additional width and slotted mounting holes give extra flexibility on studs before securing



FB-4

CONFIGURATION DATA:

| Part No. | Description | Std.Pkg. | Faspower Xref. |
|----------|--|----------|----------------|
| FB-3 | Flat Box Mounting Bracket, 3 Box Positions for 16" stud | 25 | W3 |
| FB-4 | Flat Box Mounting Bracket 4 Box Positions for 24" stud | 25 | W4 |
| KFB-318 | Flat Bracket 3 Box Positions with 18" height Kick Stand for 16" stud | 10 | F318 |
| KFB-418 | Flat Bracket 4 Box Positions with 18" height Kick Stand for 24" stud | 10 | F418 |



FB-3



FB-4



KFB-318



KFB-418



SPECIFICATION & FEATURES

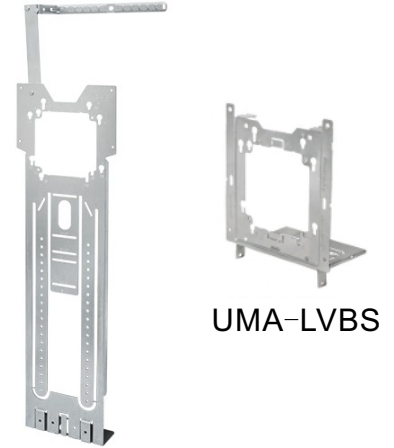
DESCRIPTION:

Discover the 18" Kick Bracket (KB-18) from Orbit Industries, a game-changer in electrical box mounting. Tailored for 4", 4-11/16", and 5" sq. boxes, the floor bracket is perfect for installing a box set at 18" box center. Keyhole design allows 90-degree box rotation. The KB-18 includes up to 6" built-in back support for additional stability. Optional stud supports can be folded out when installed between studs. The integrated CS-CJ6 provides cable support, complemented by a notch for easy set screw access. Add extra 4", 4-11/16", and 5" sq. boxes by attaching an UMA-LVBS onto either side of the KB-18. UL Listed.

CERTIFICATION:

UL file E310661, conforms to UL514A

FLAT BRACKET FAMILY ONE BOX



KB-18

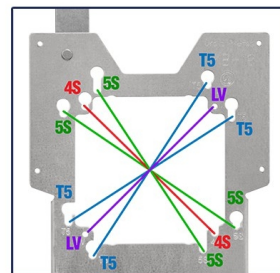
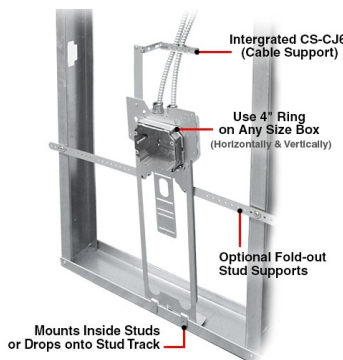
UMA-LVBS

FEATURES (Model Revised in January 2024):

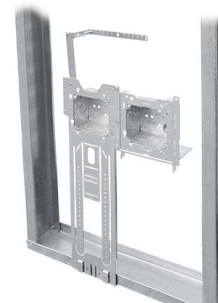
- Compatible with 4", 4-11/16" and 5" square boxes
- Measures at a standard height of 18" box center
- Unique key-hole pattern allows box to be turned 90°
- Use 4" rings on any size box (horizontally and vertically)
- Key-hole pattern holds any size box in place when ring is removed
- 4" rings can be mounted on their own for low voltage applications using 8/32 screws
- Bendable bottom center mark indicates bracket placement after drywall installation
- Up to 6" Back Support for additional stability
- Optional Stud Supports can be folded out when installed between studs
- Bottom tabs allow for brackets to be installed under or dropped onto the stud track
- Pre-installed CS-CJ6 for cable support
- Attach an extra 4", 4-11/16", or 5" sq. box (with UMA-LVBS)
- Low profile design accepts up to 2" fittings
- Top notch provides easy access to set screw fittings

CONFIGURATION DATA:

| Part No. | Description | Std.Pkg. |
|----------|--|----------|
| KB-18 | Kick Bracket 1 Box Position, 18" height with CS-CJ6 | 10 |
| UMA-LVBS | Universal Mounting Adapter with Back Support (up to 6"), allows for 4", 4-11/16" & 5" Sq. boxes to mount to KB-18 and directly to stud | 25 |



Compatible with 4", 4-11/16" and 5" Sq. Boxes (Box can be turned 90°)



Attach an extra 4", 4-11/16", or 5" sq. box (with UMA-LVBS)

