

SPECIFICATION & FEATURES

DESCRIPTION:

Orbit's Preassembled SSB-TBAR with FA-UMAB is a ready-to-install solution for mounting life safety devices in drop ceilings where tile depths are unknown. The bracket adjusts from 15" to 25" to span the T-grid, and includes riveted clips that snap easily into grid channel. Bracket stays rigid to prevent downward pressure on ceiling tiles, even at full extension. FA-UMAB's built-in adapter allows for vertical adjustment from 0" to 1-1/2", ensuring box opening is flush with tile surfaces. This 4" sq. box is 3-1/2" deep - ideal for oversize horn strobes and other notification devices. FA-UMAB is powder coated with a red finish. Installer may utilize either factory-designated holes on the adapter or bracket for branch line restraints, such as seismic wire.

FEATURES:

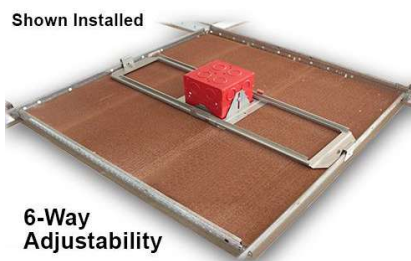
- Telescoping bracket adjusts from 15" to 25"
- 6-way adjustability
- Includes two (2) riveted T-bar clips with holes for Tek screw (helps comply with NEC 314.23 (D) (1))
- Built-in adapter allows box adjustment from flush to 1-1/2" via guided slots (ships with box set at 5/8" raised)
- Two (2) outside-facing screws lock box at desired depth
- Designated holes on either SSB-TBAR or FA-UMAB are approved for branch line restraints
- Ships preassembled to reduce installation time
- Patented

CONFIGURATION DATA:

Part No.	Description	Std.Pkg.
FA-TBAR-UMAB	PREASSEMBLED SSB-TBAR WITH FA-UMAB	10

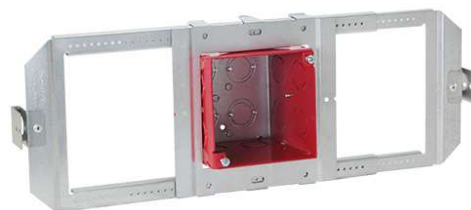


Designated Holes for
Branch Line Restraints
(Use as application requires)



Shown Installed
6-Way
Adjustability

PREASSEMBLED SSB-TBAR WITH FA-UMAB



FA-TBAR-UMAB



SPECIFICATIONS:

Box Dimensions

- Width: 4"
- Height: 4"
- Depth: 3 - 1/2"
- Volume: 46.0 Cu.In.
- Material: 16 GA Sheet Steel
- Mfg. Process: Welded
- Color: Galvanized (SSB-TBAR); Red (FA-UMAB)
- KO Sides: (12) - CKO
- KO Bottom: (4) - CKO
(Side K.O.s may not be accessible)

