

SPECIFICATION & FEATURES

DESCRIPTION:

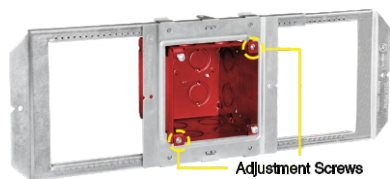
Orbit's Preassembled SSB-T5 with FA-UMFAB is a ready-to-install solution for mounting life safety devices between wall studs or hard-lid ceiling joists. The SSB-T5 adjusts from 15" to 25" with the FA-UMFAB attached to bracket. FA-UMFAB's built-in adapter allows for box depth adjustment from 1/2" to 1-1/2", ensuring box opening is flush with finished drywall. This 4" sq. box is 3-1/2" deep - ideal for oversize horn strobes and other notification devices. FA-UMFAB is powder coated with a red finish. SSB-T5 maintains rigidity at full 25" extension, so there is no need for added back support.

FEATURES:

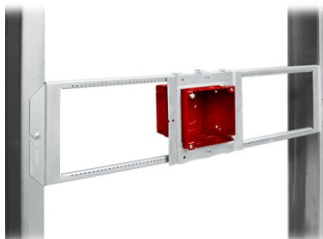
- Telescoping bracket adjusts from 15" to 25"
- Mount boxes between studs or overhead between hard lid ceiling joists
- Maintains rigidity when fully extended, eliminating need for back support
- 6-way adjustability
- Built-in adapter allows box adjustment from 1/2" to 1-1/2" via front adjustment screws
- Front adjustment screws allow the box to be adjusted before and after drywall installation
- Engraved depth stamp on box allows for depth measurement without requiring additional measuring tools
- Ships preassembled to reduce handling and installation time
- Ideal for Fire Life Safety rough-in

CONFIGURATION DATA:

Part No.	Description	Std. Pkg.	Std. Pkg. Wt.
FA-SSB-UMFAB	PREASSEMBLED SSB-T5 WITH FA-UMFAB	10	23.88 lbs.



Adjustment Screws

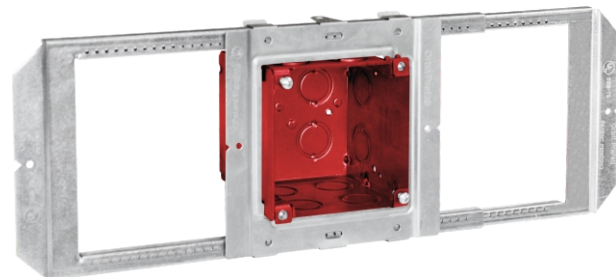


FA-UMFAB Between Studs



FA-UMFAB Overhead (Hard Lid)

PREASSEMBLED SSB-T5 WITH FA-UMFAB



FA-SSB-UMFAB



SPECIFICATIONS:

Box Dimensions

- Width: 4"
- Height: 4"
- Depth: 3-1/2"
- Cu In: 46.0
- Material: 16 GA Sheet Steel
- Mfg. Process: Welded
- Color: Galvanized (SSB-T5)
Red (FA-UMFAB)
- KO Sides: (12) - CKO
- KO Bottom: (4) - CKO

