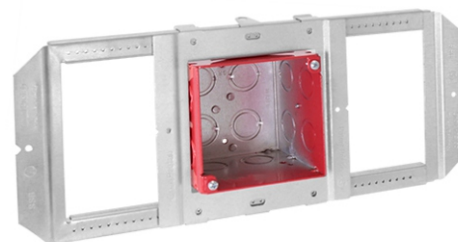


## SPECIFICATION & FEATURES

## PREASSEMBLED SSB-T5 WITH FA-UMAB

### DESCRIPTION:

Orbit's Preassembled SSB-T5 with FA-UMAB is a ready-to-install solution for mounting life safety devices between wall studs or hard-lid ceiling joists. The SSB-T5 adjusts from 15" to 25" with the FA-UMAB attached to bracket. FA-UMAB's built-in adapter allows for box depth adjustment from 0" to 1-1/2", ensuring box opening is flush with finished drywall. This 4" sq. box is 3-1/2" deep - ideal for oversize horn strobes and other notification devices. FA-UMAB is powder coated with a red finish. SSB-T5 maintains rigidity at full 25" extension, so there is no need for added back support.



FA-SSB-UMAB



### FEATURES:

- Telescoping bracket adjusts from 15" to 25"
- Mount boxes between studs or overhead between hard lid ceiling joists
- Maintains rigidity when fully extended, eliminating need for back support
- 6-way adjustability
- Built-in adapter allows box adjustment from flush to 1-1/2" via guided slots (ships with box set at 5/8" raised)
- Two (2) outside-facing screws lock box at desired depth
- Ships preassembled to reduce installation time
- Patented

### SPECIFICATIONS:

#### Box Dimensions

- Width: 4"
  - Height: 4"
  - Depth: 3 - 1/2"
  - Volume: 46.0 Cu.In.
  - Material: 16 GA Sheet Steel
  - Mfg. Process: Welded
  - Color: Galvanized (SSB-T5); Red (FA-UMAB)
  - KO Sides: (12) - CKO
  - KO Bottom: (4) - CKO
- (Side K.O.s may not be accessible)

### CONFIGURATION DATA:

Part No.	Description	Std.Pkg.
FA-SSB-UMAB	PREASSEMBLED SSB-T5 WITH FA-UMAB	10

