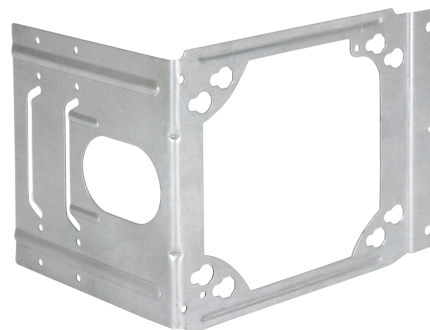


SPECIFICATION & FEATURES

BOX MOUNTING ADAPTERS

DESCRIPTION:

Orbit Industries' Box Mounting Adapter mounts 4" or 4-11/16" square boxes directly-to-studs. The bracket features Far Side Support for up to 4" deep studs, eliminating most of the box movement. Mounting holes allow for the use of a 4" ring, removing the need for an electrical box on low voltage applications.



CERTIFICATION:

UL file E310661



FEATURES:

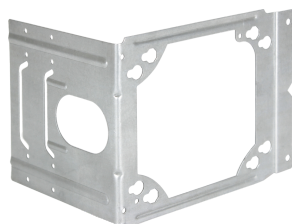
- BMA-4 mounts 4" & 4-11/16" Sq. boxes directly-to-stud
- BMA-4's mounting holes allow for the installation of a 4" ring for low voltage applications with #8-32 screws
- BMA-4's adjustable Back Support helps maintain rigidity once installed
- BMA-4's low profile design limits drywall bulging
- For use with metal or wood studs
- For tool-less far-side support up to 6", see BMA-26

SPECIFICATION:

Material: Sheet Steel
 Color: Galvanized
 Mfg. Process: Stamped

CONFIGURATION DATA:

Part No.	Description	Std.Pkg.
BMA-4	Box Mounting Adapter with Far Side Support up to 4"	25
FS-456-EXT	Far Side Support Extension For 4", 5-1/2", 6"	50



BMA-4



FS-456-EXT

