

SPECIFICATION SHEET

2-Gang Flip & Round Plug Type Covers



FLB-R2G-DL-C-BR



FLB-R2G-DL-C-SS



FLB-R2G-DD-C-BR



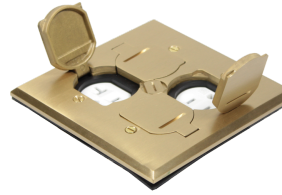
FLB-R2G-DD-C-SS



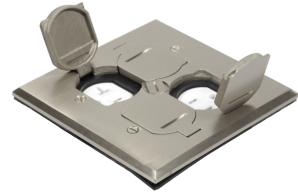
FLB-DL-C-BR



FLB-DL-C-SS



FLB-DD-C-BR



FLB-DD-C-SS

DESCRIPTION:

Orbit's 2-Gang Floor Box Assembly Flip & Round Plug Type are used for either carpet, tile, or wood floors. Covers are available with 20A duplex and low-voltage receptacles and either flip or round plug styles. In addition, Orbit's covers are available in Brass or Stainless Steel.

FEATURES:

- 125 VAC
- For use with carpet, tile or wood floors
- Includes cover, device plate, receptacle, gaskets and screws
- Meets NEC Article 406.12 for tamper-resistant receptacles



SPECIFICATIONS:

| Cat. No. | Cover Style | | | |
|-----------------|-------------|--------------------------------------|-----------------|-----------|
| | Type | Receptacle | Color | Std. Pkg. |
| FLB-R2G-DL-C-BR | Round Plug | 20A TR Duplex + Keystone Jack Holder | Brass | 10 |
| FLB-R2G-DL-C-SS | Round Plug | 20A TR Duplex + Keystone Jack Holder | Stainless Steel | 10 |
| FLB-DL-C-BR | Flip | 20A TR Duplex + Keystone Jack Holder | Brass | 10 |
| FLB-DL-C-SS | Flip | 20A TR Duplex + Keystone Jack Holder | Stainless Steel | 10 |
| FLB-R2G-DD-C-BR | Round Plug | (2) 20A TR Duplex | Brass | 10 |
| FLB-R2G-DD-C-SS | Round Plug | (2) 20A TR Duplex | Stainless Steel | 10 |
| FLB-DD-C-BR | Flip | (2) 20A TR Duplex | Brass | 10 |
| FLB-DD-C-SS | Flip | (2) 20A TR Duplex | Stainless Steel | 10 |

DIMENSIONS:

