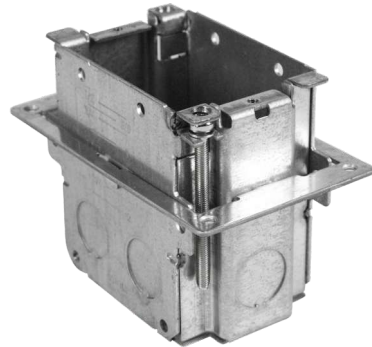


# SPECIFICATION SHEET

## 1-Gang Adjustable Floor Box



1GAB

### DESCRIPTION:

Orbit's 1-Gang Adjustable Floor Boxes are used to install 1-gang flip lid or round plug type covers for either carpet, tile, or wood floors when finished floor depth is not know. Corner screws on the floor box allows for adjustment of depth from 0" to 2" and allows for installation in either sub-floors or finished floors. In addition, adjustable floor box features holes for installing to studs for side mounting applications.

### FEATURES:

- Adjustable floor boxes allows for fast and easy installation for both new and existing work
- Adjusts from 0" to 2" using corner screws
- For use in carpet, tile, and wood
- Meets NEC Article 406.12 for tamper-resistant receptacles
- UL Listed E227970

### SPECIFICATIONS:



Cat. No.	Description	Knockouts		Cu. In.
		Sides	Bottom	
1GAB	Adjustable Box only, Adjustable from 0" to 2"	(6)-1/2"	(2)-1/2"	23.5

### DIMENSIONS:

