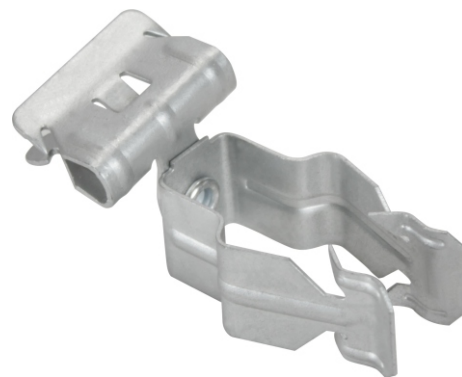


SPECIFICATION & FEATURES

CONDUIT TO FLANGE CLIPS SIDE MOUNT, PUSH IN 1/2" ~ 1" EMT, 1/8" ~ 3/4" FLANGE

DESCRIPTION:

Orbit Industries' side mount push in conduit to flange clips can be easily and fast installed to beam flanges from 1/8" to 3/4" with only a hammer. The clips support EMT and rigid conduits from the side of beams and conduits can be easily pushed in by hand. The rotatable joint allows the push in conduit clip to rotate 360° to fit conduits in different directions.



FEATURES:

- Spring Steel
- Only hammer needed for installation
- Available for EMT, rigid and aluminum conduit
- Can pivot through 360°

CONFIGURATION DATA:

Part No.	Flange Thickness	EMT Size	Rigid Size	Static Load	Std. Pkg.
F8P24SM	1/8" ~ 1/4"	1/2"	-	15 LB	100
F8P58SM	5/16" ~ 1/2"	1/2"	-	15 LB	100
F8P912SM	9/16" ~ 3/4"	1/2"	-	15 LB	100
F12P24SM	1/8" ~ 1/4"	3/4"	1/2"	15 LB	100
F12P58SM	5/16" ~ 1/2"	3/4"	1/2"	15 LB	100
F12P912SM	9/16" ~ 3/4"	3/4"	1/2"	15 LB	50
F16P24SM	1/8" ~ 1/4"	1"	3/4"	15 LB	100
F16P58SM	5/16" ~ 1/2"	1"	3/4"	15 LB	100
F16P912SM	9/16" ~ 3/4"	1"	3/4"	15 LB	50

