

SPECIFICATION & FEATURES

DESCRIPTION:

Orbit Industries threaded rigid conduit bodies with stamped cover and gasket are commonly used for electrical service entrance wires or as an economical convenience box when extra wire capacity is needed. They are attached to threaded rigid or IMC conduits when a change of direction is required. The removable cover makes general maintenance and wire pulling and feed through easy and convenient. Orbit Industries threaded conduit bodies save time and money by eliminating costly bending of large conduits in order to change the directions of conduit runs. Installers can easily bend wires into the smooth turns. Their powder-coated finish and water-tight gasket ensure a weatherproof installation.

CERTIFICATION:

UL file E227970, Conforms to UL 514A

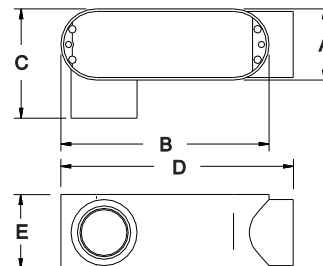
THREADED CONDUIT BODIES "LR" SERIES WITH STAMPED AL COVER



FEATURES:

- Die Cast Copper-Free Aluminum Body
- With Stamped Aluminum Cover
- Neoprene Gasket
- Gray Color Body, Silver Color Cover
- Suitable for wet location when used with Gasket and Cover
- NPT Thread Hubs

LINE DRAWINGS:



CONFIGURATION DATA:

Part No.	Trade Size	A (in)	B (in)	C (in)	D (in)	E (in)	Max. no. of conductors	Volumn (Cu. In.)	Std. Pkg.	Master Ctn.
LR-50AS	1/2"	1-5/16"	3-7/8"	2-1/16"	4-5/16"	1-3/8"	-	4.3	10	40
LR-75AS	3/4"	1-9/16"	4-11/16"	2-5/16"	5-1/8"	1-5/8"	3#6	7.3	10	40
LR-100AS	1"	1-13/16"	5-3/8"	2-11/16"	5-15/16"	1-7/8"	3#4	12	5	20
LR-125AS	1-1/4"	2-1/2"	7-5/16"	3-1/2"	7-13/16"	2-1/2"	3#2	32.3	2	8
LR-150AS	1-1/2"	2-1/2"	7-5/16"	3-1/2"	7-13/16"	2-1/2"	3#2	34.2	2	8
LR-200AS	2"	3-3/16"	9-1/2"	4-5/16"	10-1/16"	3-3/8"	3#2/0	67	1	-
LR-250AS	2-1/2"	4-1/2"	12-1/16"	5-7/8"	12-13/16"	4"	3#250	157.3	1	-
LR-300AS	3"	4-1/2"	12-1/16"	5-7/8"	12-13/16"	4-1/2"	3#250	179.8	1	-
LR-400AS	4"	5-9/16"	15-1/16"	7-11/16"	15-5/8"	5-5/8"	3#250	323	1	-

