

SPECIFICATION & FEATURES

DESCRIPTION:

Orbit Industries' Form 8 threaded conduit bodies used with Rigid/IMC conduits and serve as pull fittings that make bends and connect conduit runs together. The flat back design provides easy access for wire pulling and maintenance. Larger body capacity allow for installation of heavier conductors using rigid threaded conduit. Trade Size from 1/2" To 4"

CERTIFICATION:

UL file E227970, conforms to UL 514A

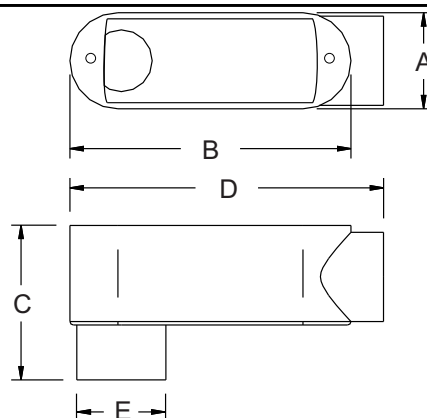
GRAY IRON FORM 8 THREADED CONDUIT BODIES "LB" SERIES 1/2" TO 4"



FEATURES:

- Sand cast class 30 gray iron alloy
- Zinc electroplated for added corrosion protection
- Flat back design for maximum internal wiring volume
- Interchangeable with other Form 8 conduit bodies
- Suitable for wet location when used with gasket and cover
- NPT Thread Hubs

LINE DRAWINGS:



CONFIGURATION DATA:

Part No.	Trade Size	A (in)	B (in)	C (in)	D (in)	E (in)	Max. no. of conductors	Volumn (Cu. In.)	Std. Pkg.
LB8-50	1/2"	1-7/16"	4-1/4"	2-1/4"	5-1/8"	1-1/4"	-	5	10
LB8-75	3/4"	1-5/8"	4-15/16"	2-9/16"	5-13/16"	1-1/2"	3 #6 AWG	8	5
LB8-100	1"	1-7/8"	5-5/8"	2-7/8"	6-5/8"	1-3/4"	3 #4 AWG	13	5
LB8-125	1-1/4"	2-1/4"	6-11/16"	3-1/4"	7-3/4"	2-3/16"	3 #2 AWG	24	1
LB8-150	1-1/2"	2-13/16"	7-15/16"	3-11/16"	9-1/16"	2-7/16"	3 #1/0 AWG	42.5	1
LB8-200	2"	3-13/16"	9-13/16"	4-11/16"	11-1/16"	2-7/8"	3 #4/0 AWG	105	1
LB8-250	2-1/2"	5-1/16"	12-5/16"	6-1/8"	14-5/16"	3-3/8"	3 #300 MCM	200	-
LB8-300	3"	5-1/16"	12-5/16"	6-3/16"	14-5/16"	4-1/8"	3 #350 MCM	217	-
LB8-350	3-1/2"	6-5/16"	15-1/8"	7-3/16"	16-14/16"	4-9/16"	3 #500 MCM	380	-
LB8-400	4"	6-5/16"	15-1/8"	7-1/4"	16-14/16"	5-1/4"	3 #500 MCM	400	-

