

SPECIFICATION & FEATURES

90 DEG ANGLE RIGID CONDUIT ELBOW

DESCRIPTION:

90 deg Rigid steel conduit elbow is manufactured from prime conduit shell with high-strength in accordance with the latest specifications and standard of ANSI C80.1(UL6). The interior and exterior surface of elbows are free from defect with a smooth welded seam, and are thoroughly and evenly coated with zinc using hot dip galvanizing process. Elbows are produced in normal trade sizes from 1/2" to 4" and used to connect the rigid steel conduit to change the way of the conduit. Elbows are threaded on both ends.



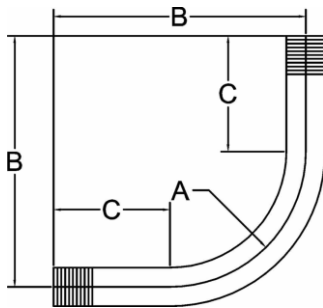
CERTIFICATION:

UL file E358012, Conforms to UL 514B

FEATURES:

- Galvanized Steel
- Meet UL 6 and ANSI C80.1
- NPT Thread

LINE DRAWINGS:



CONFIGURATION DATA:

Part No.	Trade Size	A (in)	B (in)	C (in)	Std.Pkg.
REL90-50	1/2"	4.02	6.87	2.85	50
REL90-75	3/4"	4.49	7.40	2.92	50
REL90-100	1"	5.75	8.74	2.99	25
REL90-125	1-1/4"	7.24	10.56	3.32	20
REL90-150	1-1/2"	8.27	11.91	3.64	15
REL90-200	2"	9.49	13.73	4.24	10
REL90-250	2-1/2"	10.51	15.75	5.24	50
REL90-300	3"	12.99	19.13	6.14	35
REL90-350	3-1/2"	15.00	21.73	6.73	25
REL90-400	4"	15.98	23.10	7.12	25

