

## SPECIFICATION & FEATURES

## SERVICE ENTRANCE CAPS CLAMP TYPE

### DESCRIPTION:

Orbit Industries' clamp type service entrance caps are slip-fit screw type entrance cap for rigid conduit or IMC and some EMT.



### CERTIFICATION:

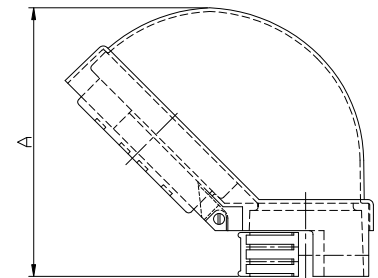
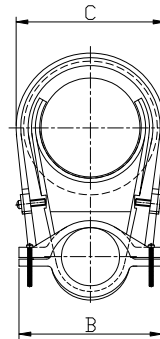
UL file E310661, Conforms to UL 514B



### FEATURES:

- Copper-Free Aluminum

### LINE DRAWINGS:



### CONFIGURATION DATA:

Part No.	Trade Size	A (in)	B (in)	C (in)	Std.Pkg.	Master Ctn.
EC-50	1/2"	2.579	2.244	2.165	15	90
EC-75	3/4"	2.815	2.441	2.323	10	60
EC-100	1"	3.150	2.756	2.559	7	42
EC-125	1-1/4"	3.248	3.150	3.150	5	30
EC-150	1-1/2"	3.858	3.346	3.465	4	24
EC-200	2"	5.433	3.661	4.409	4	8
EC-250	2-1/2"	7.579	5.315	6.181	1	3
EC-300	3"	8.012	5.906	6.181	1	3
EC-350	3-1/2"	9.488	7.835	8.031	1	2
EC-400	4"	9.173	7.835	8.031	1	2

