

SPECIFICATION & FEATURES

EMT CONDUIT BODIES SET-SCREW TYPE "LR" SERIES

DESCRIPTION:

Orbit Industries' EMT set-screw Conduit Bodies "LR" Series are for use with EMT conduits from 1/2" to 2".



CERTIFICATION:

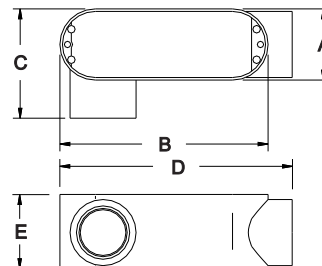
UL file E227970, Conforms to UL 514A



FEATURES:

- Copper-Free Aluminum Alloy
- Plated Steel Set-Screws

LINE DRAWINGS:



CONFIGURATION DATA:

Part No.	Trade Size	A (in)	B (in)	C (in)	D (in)	E (in)	Std. Pkg.
SSLR-50	1/2"	1-5/16"	3-15/16"	2"	4-3/8"	1-5/16"	10
SSLR-75	3/4"	1-9/16"	4-5/8"	2-1/4"	5-1/8"	1-5/8"	10
SSLR-100	1"	1-13/16"	5-3/8"	2-3/4"	6"	1-15/16"	5
SSLR-125	1-1/4"	2-1/2"	7-1/4"	3-7/16"	7-11/16"	2-1/2"	2
SSLR-150	1-1/2"	2-1/2"	7-1/4"	3-7/16"	7-11/16"	2-11/16"	2
SSLR-200	2"	3-1/8"	9-1/2"	4-3/16"	10"	3-3/8"	1

