

SPECIFICATION & FEATURES

EMT CONDUIT BODIES SET-SCREW TYPE "LB" SERIES

DESCRIPTION:

Orbit Industries' EMT set-screw Conduit Bodies "LB" Series are for use with EMT conduits from 1/2" to 4".



CERTIFICATION:

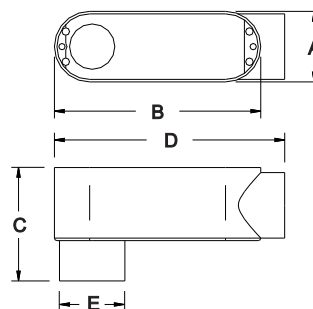
UL file E227970, Conforms to UL 514A



FEATURES:

- Copper-Free Aluminum Alloy
- Plated Steel Set-Screws

LINE DRAWINGS:



CONFIGURATION DATA:

Part No.	Trade Size	A (in)	B (in)	C (in)	D (in)	E (in)	Std. Pkg.
SSLB-50	1/2"	1-5/16"	3-15/16"	2-1/16"	4-3/8"	1-1/16"	10
SSLB-75	3/4"	1-9/16"	4-5/8"	2-3/8"	5-1/8"	1-5/16"	10
SSLB-100	1"	1-13/16"	5-3/8"	2-7/8"	6"	1-9/16"	5
SSLB-125	1-1/4"	2-1/2"	7-1/4"	3-6/16"	7-11/16"	2"	2
SSLB-150	1-1/2"	2-1/2"	7-1/4"	3-9/16"	7-11/16"	2-1/4"	2
SSLB-200	2"	3-1/8"	9-1/2"	4-3/8"	10"	2-11/16"	1
SSLB-250	2-1/2"	4-7/16"	12-1/8"	5-3/16"	12-3/4"	3-3/8"	-
SSLB-300	3"	4-7/16"	12-1/8"	5-3/4"	12-3/4"	4"	-
SSLB-350	3-1/2"	5-1/2"	15-1/16"	7-1/16"	15-9/16"	5"	-
SSLB-400	4"	5-1/2"	15-1/16"	7-1/16"	15-9/16"	5"	-

