

SPECIFICATION & FEATURES

MALLEABLE IRON THREADED CONDUIT BODIES "LB" SERIES

DESCRIPTION:

Orbit Industries' malleable conduit bodies are zinc plated malleable iron with high tensile strength and ductility. High corrosion-resistance, high impact and shock resistance. Smooth and rounded integral bushings for protection of wire insulation. They are interchangeable with appleton Form 35 and Cooper Crouse Hinds Form 5 conduit bodies. Built-in easy-pulling rollers is optional from 1-1/4" to 4", eliminate damage when cable is pulled through hubs.



CERTIFICATION:

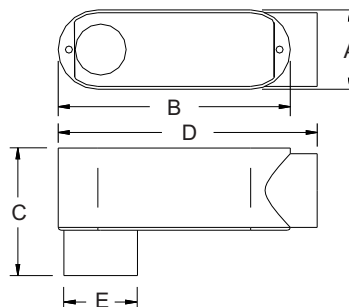
UL file E227970, Conforms to UL 514A



FEATURES:

- Malleable Iron
- Electroplated Zinc
- Suitable for wet location when used with Gasket and Cover
- NPT Thread Hubs

LINE DRAWINGS:



CONFIGURATION DATA:

Part No.	Trade Size	A (in)	B (in)	C (in)	D (in)	E (in)	Max. no. of conductors	Volumn (Cu. In.)	Std.Pkg.
MLB-50	1/2"	1-3/8"	4"	2-3/16"	4-5/8"	1-1/2"	-	4.500	10
MLB-75	3/4"	1-5/8"	4-11/16"	2-3/8"	5-3/8"	1-11/16"	3#6	7.500	10
MLB-100	1"	1-13/16"	5-3/8"	2-7/8"	6-1/4"	2"	3#4	12.500	5
MLB-125	1-1/4"	2-1/2"	7-1/4"	3-1/2"	8-1/8"	2-5/8"	3#2	32.300	2
MLB-150	1-1/2"	2-1/2"	7-1/4"	3-11/16"	8-1/8"	2-13/16"	3#1/0	35.300	2
MLB-200	2"	3-1/8"	9-1/2"	4-1/2"	10-1/2"	3-1/2"	3#4/0	73.000	1
MLB-250	2-1/2"	4-3/8"	12-1/4"	5-7/16"	13-3/4"	4"	3#300	142.000	1
MLB-300	3"	4-3/8"	12-1/4"	6-3/16"	13-13/16"	4-5/8"	3#400	173.000	1
MLB-350	3-1/2"	5-1/2"	15"	7-3/16"	16-5/8"	5-7/16"	3#500	300.000	1
MLB-400	4"	5-1/2"	15"	7-3/8"	16-3/4"	5-3/4"	3#500	328.000	1

