

SPECIFICATION & FEATURES

THREADED CONDUIT BODIES "LR" SERIES WITHOUT COVERS

DESCRIPTION:

Orbit Industries threaded conduit bodies are commonly used for electrical service entrance wires or as an economical convenience box when extra wire capacity is needed. They are attached to threaded rigid or IMC conduits when a change of direction is required. Orbit Industries threaded conduit bodies save time and money by eliminating costly bending of large conduits in order to change the directions of conduit runs. Installers can easily bend wires into the smooth turns.



CERTIFICATION:

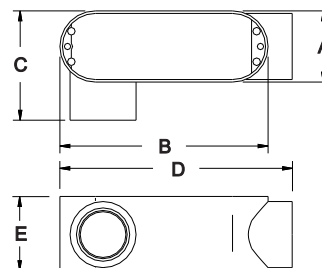
UL file E227970, Conforms to UL 514A



FEATURES:

- Die Cast Copper-Free Aluminum
- Gray color
- Suitable for wet location when used with Gasket and Cover
- NPT Thread Hubs

LINE DRAWINGS:



CONFIGURATION DATA:

Part No.	Trade Size	A (in)	B (in)	C (in)	D (in)	E (in)	Max. no. of conductors	Volumn (Cu. In.)	Std.Pkg.
LR-50	1/2"	1-5/16"	3-7/8"	2-1/16"	4-5/16"	1-3/8"	-	4.3	10
LR-75	3/4"	1-9/16"	4-11/16"	2-5/16"	5-1/8"	1-5/8"	3#6	7.3	10
LR-100	1"	1-13/16"	5-3/8"	2-11/16"	5-15/16"	1-7/8"	3#4	12	5
LR-125	1-1/4"	2-1/2"	7-5/16"	3-1/2"	7-13/16"	2-1/2"	3#2	32.3	2
LR-150	1-1/2"	2-1/2"	7-5/16"	3-1/2"	7-13/16"	2-1/2"	3#2	34.2	2
LR-200	2"	3-3/16"	9-1/2"	4-5/16"	10-1/16"	3-3/8"	3#2/0	67	1
LR-250	2-1/2"	4-1/2"	12-1/16"	5-7/8"	12-13/16"	4"	3#250	157.3	1
LR-300	3"	4-1/2"	12-1/16"	5-7/8"	12-13/16"	4-1/2"	3#250	179.8	1
LR-400	4"	5-9/16"	15-1/16"	7-11/16"	15-5/8"	5-5/8"	3#250	323	1

