

SPECIFICATION & FEATURES

STEEL EMT COUPLINGS COMPRESSION TYPE (1/2" ~ 4")

DESCRIPTION:

Orbit Industries steel EMT compression couplings are used to connect the ends of two EMT thinwall conduits together to extend the raceway. The steel construction ensures mechanical protection and the connection between one conduit to another.



CERTIFICATION:

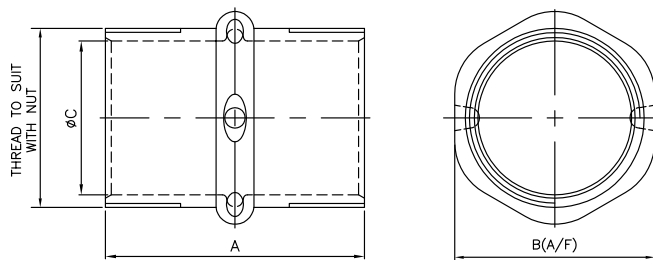
UL file E310660, conforms to UL 514B (1/2" ~ 2")
 UL file E310658, conforms to UL 514B (2-1/2" ~ 4")

FEATURES:

- Steel
- Electroplated Zinc
- Concrete-Tight when Taped
- Suitable for applications above 600V
- Compression Cap color may vary
- Sizes 2-1/2" to 4" are also listed for RIGID and IMC Conduits

LINE DRAWINGS:

1/2" ~ 4"



CONFIGURATION DATA:

Part No.	Trade Size	A (in)	B (in)	C (in)	Std.Pkg.	Master Ctn.
OF7611	1/2"	1.299	0.906	0.732	25	250
OF7612	3/4"	1.358	1.122	0.949	25	250
OF7613	1"	1.732	1.378	1.189	10	100
OF7614	1-1/4"	1.929	1.732	1.535	10	100
OF7615	1 1/2"	2.047	1.949	1.768	10	50
OF7616	2"	2.165	2.421	2.224	5	50
OF7617	2-1/2"	3.346	3.22	2.921	-	12
OF7618	3"	3.425	3.843	3.543	-	12
OF7619	3-1/2"	3.858	4.35	4.047	-	6
OF7620	4"	3.937	4.85	4.547	-	6

