

## SPECIFICATION & FEATURES

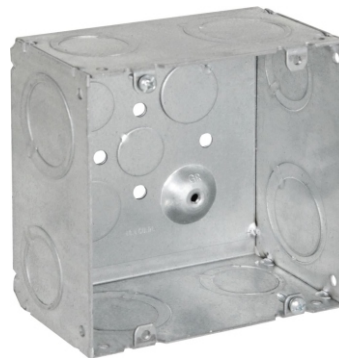
### DESCRIPTION:

Orbit Industries' 4-11/16" Square (5S) Large Capacity Boxes are suitable for Datacom and electrical applications. They are constructed from 16 gauge galvanized steel. The 2-1/2" deep, welded boxes include a pre-assembled raised ground emboss multiple and two #8-32 x 1/2" mounting screws. Knockouts are in sizes 1/2", 3/4", 1", and 1-1/4".

### CERTIFICATION:

UL file E227970, conforms to UL514A.

## 4 -11/16" SQUARE (5S) WELDED LARGE CAPACITY BOXES 2-1/2" DEEP



5SLB-2MKO

### FEATURES:

#### General:

With Raised Ground Emboss & TWO #8-32 x 1/2"

#### MOUNTING SCREWS

Suitable for Datacom & Electrical Applications

Blue Color available for Data Application

#### Knockout:

50: 1/2" K.O.

75: 3/4" K.O.

**MKO:** Moon K.O. (See sizes below)

**Mfg. Process:** WELDED



### DIMENSIONS:

Width: 4-11/16"

Height: 4-11/16"

Depth: 2-1/2"

Cu.In.: 49.4

### CONFIGURATION DATA:

Cat. No.	Description	K.O. on Sides	K.O. on Bottom	Std.Pkg.
5SLB-2MKO	2-1/2" DEEP, 4-11/16" SQUARE (5S) LARGE CAPACITY BOX	(4) - 3/4" & 1" MKO, (4) - 1" & 1-1/4" MKO	(2) - 1/2", (2) - 3/4"	24
B-5SLB	2-1/2" DEEP, 4-11/16" SQUARE (5S) LARGE CAPACITY BOX, PAINTED BLUE	(4) - 3/4" & 1" MKO, (4) - 1" & 1-1/4" MKO	(2) - 1/2", (2) - 3/4"	24

