

WARNING: Cancer and Reproductive Harm - www.P65Warnings.ca.gov

INSTALLATION INSTRUCTIONS

Orbit Power Pedestal are attractive, safe, and easy way to install Electrical Distribution Equipment, EV Charger, Power Pole, and Luminaires.

Made of low carbon steel, zinc plated and powder coated for outdoor use. The BASE is 0.236 in.(6mm) and POST 0.098 in. (2.5mm) thick.

This comes only with weatherproof cover. Recommended to use While-in-Use Extra Duty with GFCI outlet to meet 2020 NEC 406.9(B)(1) requirements.

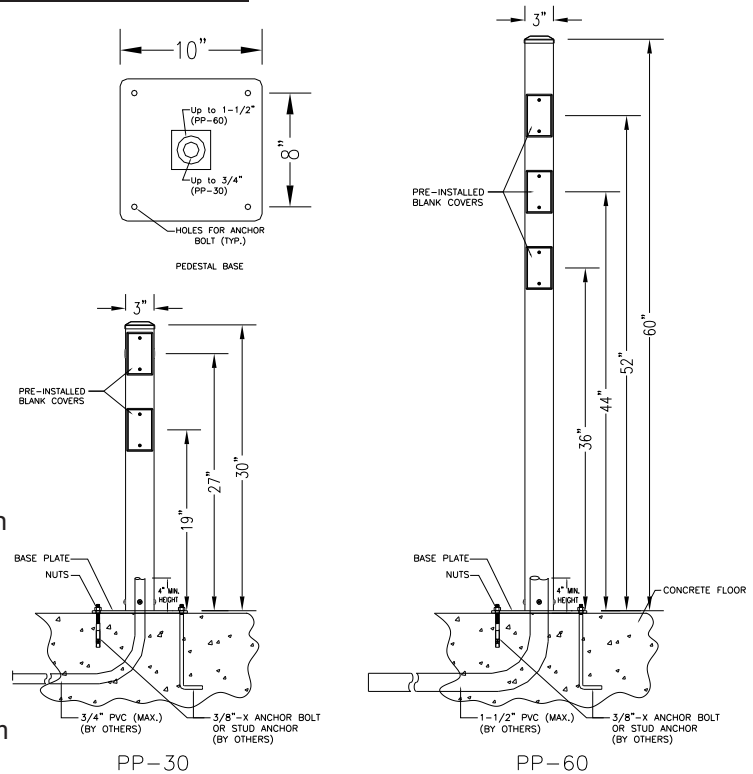
Other options are available.

2020 NEC 406.9 Receptacles in Damp or Wet Locations.
(A) Damp Locations. A receptacle installed outdoors in a location protected from the weather or in other damp locations shall have an enclosure for the receptacle that is weatherproof when the receptacle is covered (attachment plug cap not inserted and receptacle covers closed).
An installation suitable for wet locations shall also be considered suitable for damp locations.

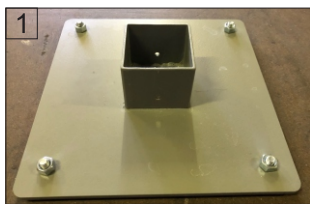
A receptacle shall be considered to be in a location protected from the weather where located under roofed open porches, canopies, marquees, and the like, and will not be subjected to a beating rain or water runoff. All 15- and 20-ampere, 125- and 250-volt nonlocking receptacles shall be a listed weather-resistant type.

(B) Wet Locations.

(1) Receptacles of 15 and 20 Amperes in a Wet Location. Receptacles of 15 and 20 amperes, 125 and 250 volts installed in a wet location shall have an enclosure that is weatherproof whether or not the attachment plug cap is inserted. An outlet box hood installed for this purpose shall be listed and shall be identified as "extra-duty." Other listed products, enclosures, or assemblies providing weatherproof protection that do not utilize an outlet box hood need not be marked "extra duty."



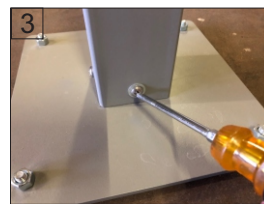
TYPICAL WIRING INSTRUCTIONS:



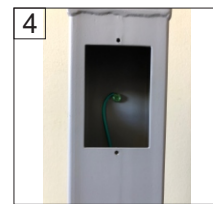
1 Set up the pedestal base according to hole dimensions. Use 3/8"-X Anchor Bolt or Stud Anchor (by others).



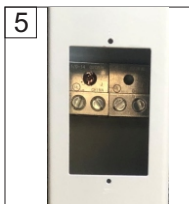
2 Remove the blank cover(s).



3 Slides over the pedestal body to the base and tighten with 4 screws.



4 PP-30 comes with 10-32 #12 - 10 in. ground pigtail installed.



5 PP-60 comes with (2) - #1/0 - #14 terminal lugs installed.



6 Install the wiring device and wire accordingly.



7 Put together the wiring device, gasket, and while-in-use cover and screw to the pedestal post.



8 Finished Installation. Recommended to put silicone in all opening.

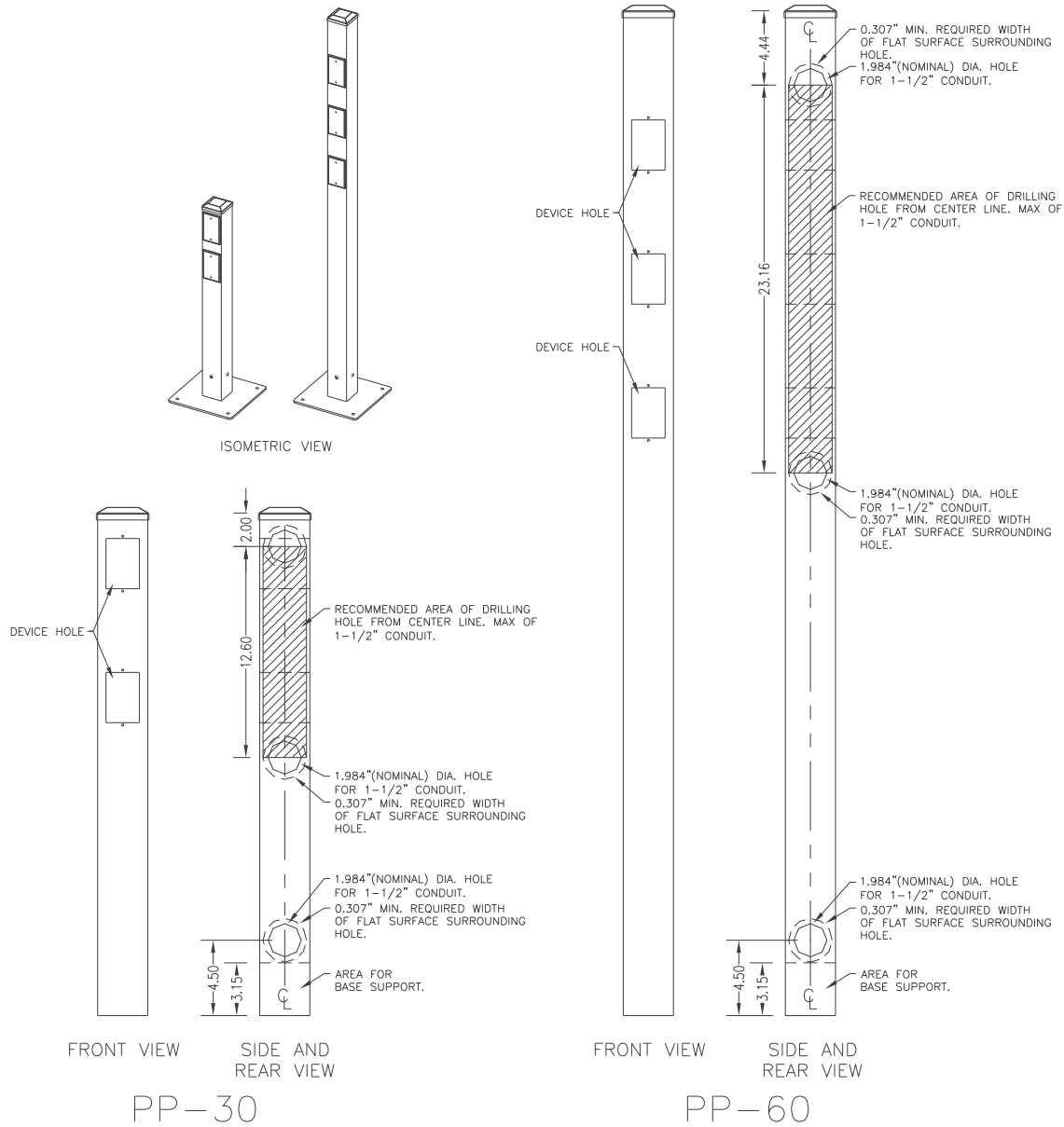


FIGURE 1

DRILLING HOLE FOR PP-30 AND PP-60

1. DRILL HOLE ONLY ON RECOMMENDED AREA (SEE FIGURE 1).
2. MAXIMUM TRADE SIZE IS 1-1/2". SEE BELOW TABLE FOR HOLE DIAMETER REQUIREMENT FOR ALL OTHER SIZES.

TRADE SIZE OF CONDUIT (metric designator)	MINIMUM WIDTH OF FLAT SURFACE SURROUNDING KNOCKOUT, mm (in)	KNOCKOUT DIAMETERS, mm (in)		
		MINIMUM	NOMINAL	MAXIMUM
1/2 (16)	3.38 (0.133)	21.84 (0.860)	22.23 (0.875)	22.61 (0.890)
3/4 (21)	3.68 (0.145)	27.79 (1.094)	28.17 (1.109)	28.96 (1.140)
1 (27)	4.72 (0.186)	34.52 (1.359)	34.93 (1.375)	35.71 (1.406)
1-1/4 (35)	6.45 (0.254)	43.66 (1.719)	44.04 (1.734)	44.83 (1.765)
1-1/2 (41)	7.80 (0.307)	49.73 (1.958)	50.39 (1.984)	51.20 (2.016)

REFERENCE UL 514A TABLE 6

3. DRILL HOLE ON THE CENTER LINE. FOR EASY ACCESS INSTALLATION, BEST LOCATION IS NEAR BY DEVICE HOLE AND 4.5" FROM THE BOTTOM.
4. INSTALL UL LISTED WET LOCATION OR LIQUID TIGHT FITTINGS. OBSERVE AND FOLLOW WET LOCATION OR LIQUID TIGHT FITTING INSTALLATION INSTRUCTIONS.



SLOPE INSTALLATION

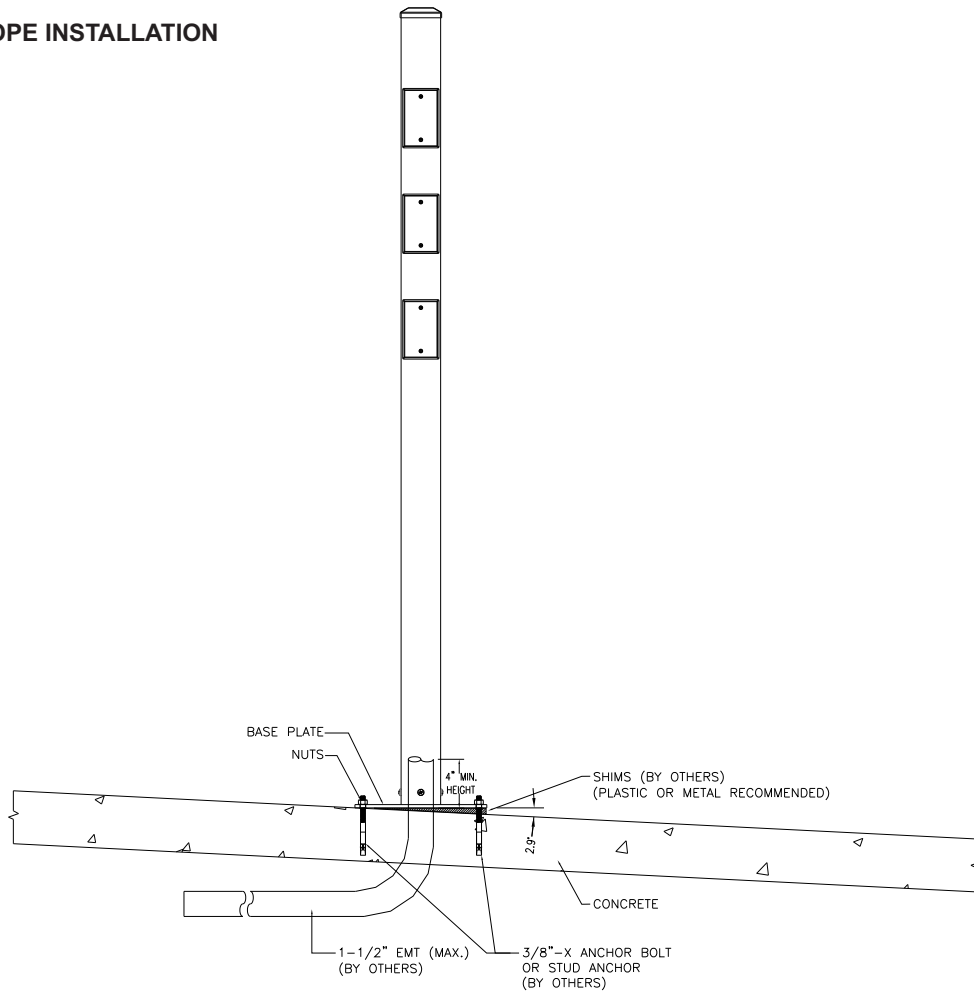


FIGURE 2