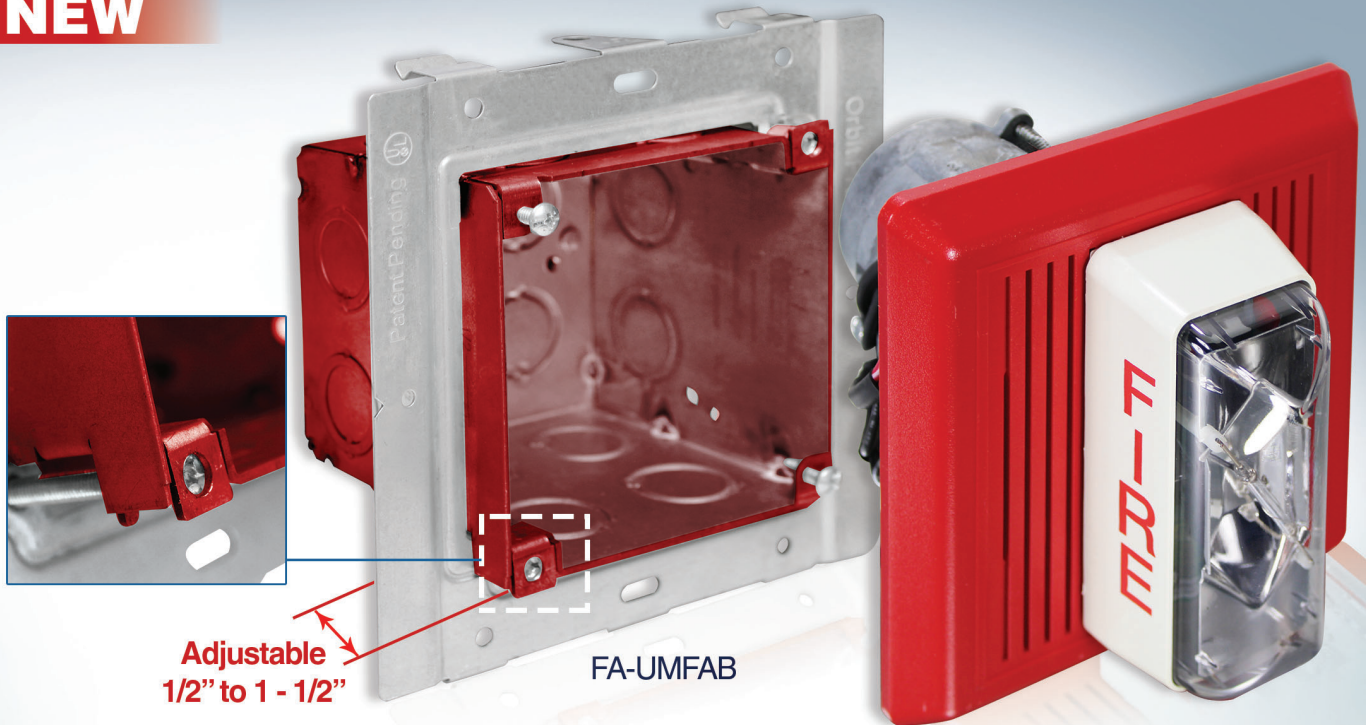


# UNIVERSAL MOUNTING FRONT ADJUSTMENT BOXES



**NEW**



## BEST WAY TO MOUNT FIRE ALARM DEVICES!



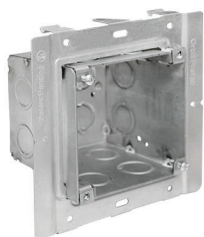
FA-UMFAB SHOWN INSTALLED ON SSB-T5

**PATENT PENDING**

Simplify rough-in for oversized Fire Life Safety devices with Orbit's **NEW Front Adjustment 4" Square Boxes!**

- Front adjustment screws allow the box to be adjusted before and after drywall installation
- Built-In Front Adjustment 1/2"-1-1/2"; ships preset at 5/8" raise
- Branch Line Restraint holes
- UMFAB's mount Direct-to-Stud, snap onto SSB-T5 for Between-Stud, or SSB-TBAR for T-Bar installs

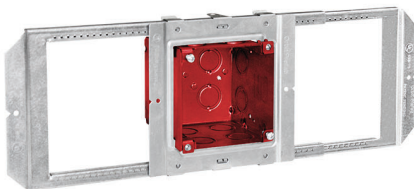
# UNIVERSAL MOUNTING FRONT ADJUSTMENT BOXES



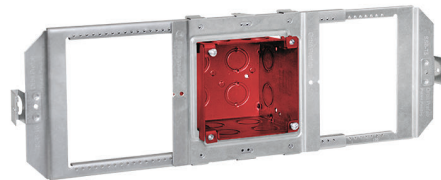
UMFAB



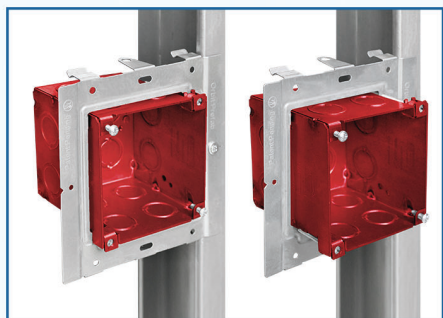
FA-UMFAB



FA-SSB-UMFAB



FA-TBAR-UMFAB



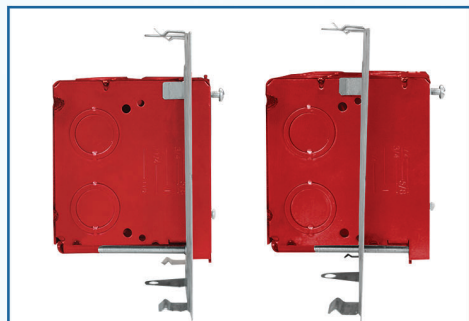
DIRECT-TO-STUD



BETWEEN STUDS  
FA-UMFAB Installed on SSB-T5



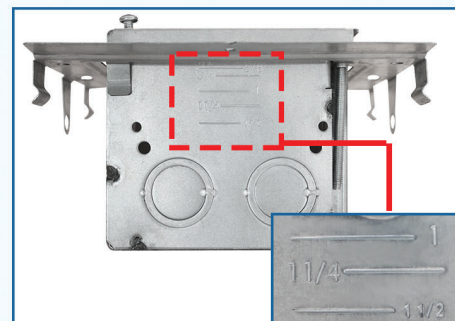
DROP CEILING APPLICATION  
FA-UMFAB Installed on SSB-TBAR



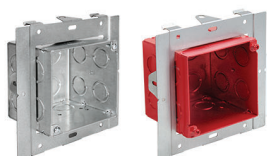
ADJUSTABILITY RANGE  
1/2" to 1-1/2"



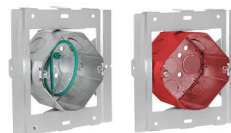
ADAPTER TO BRACKET LOCK  
Fold tabs to secure adapter on SSB Brackets



DEPTH MARKING  
Engraved depth stamp on box allows for depth measurement without requiring additional measuring tools



For original External Adj. Boxes, see UMAP Series



For a 4" octagon (40) box version, see UMAP-4R Series

Cat. No.	Description	Box Depth	Cu. In.	Adj. Range	KO Sides	KO Bottom	Std. Pkg.
UMFAB	Front Adj. 4" Sq. Box	3-1/2"	46.0	1/2" - 1-1/2"	(12) CKO	(4) CKO	10
FA-UMFAB	Front Adj. 4" Sq. Box, Red Powder Coat Finish	3-1/2"	46.0	1/2" - 1-1/2"	(12) CKO	(4) CKO	10
FA-SSB-UMFAB	Preassembled SSB-T5 with FA-UMFAB	3-1/2"	46.0	1/2" - 1-1/2"	(12) CKO	(4) CKO	10
FA-TBAR-UMFAB	Preassembled SSB-TBAR with FA-UMFAB	3-1/2"	46.0	1/2" - 1-1/2"	(12) CKO	(4) CKO	10