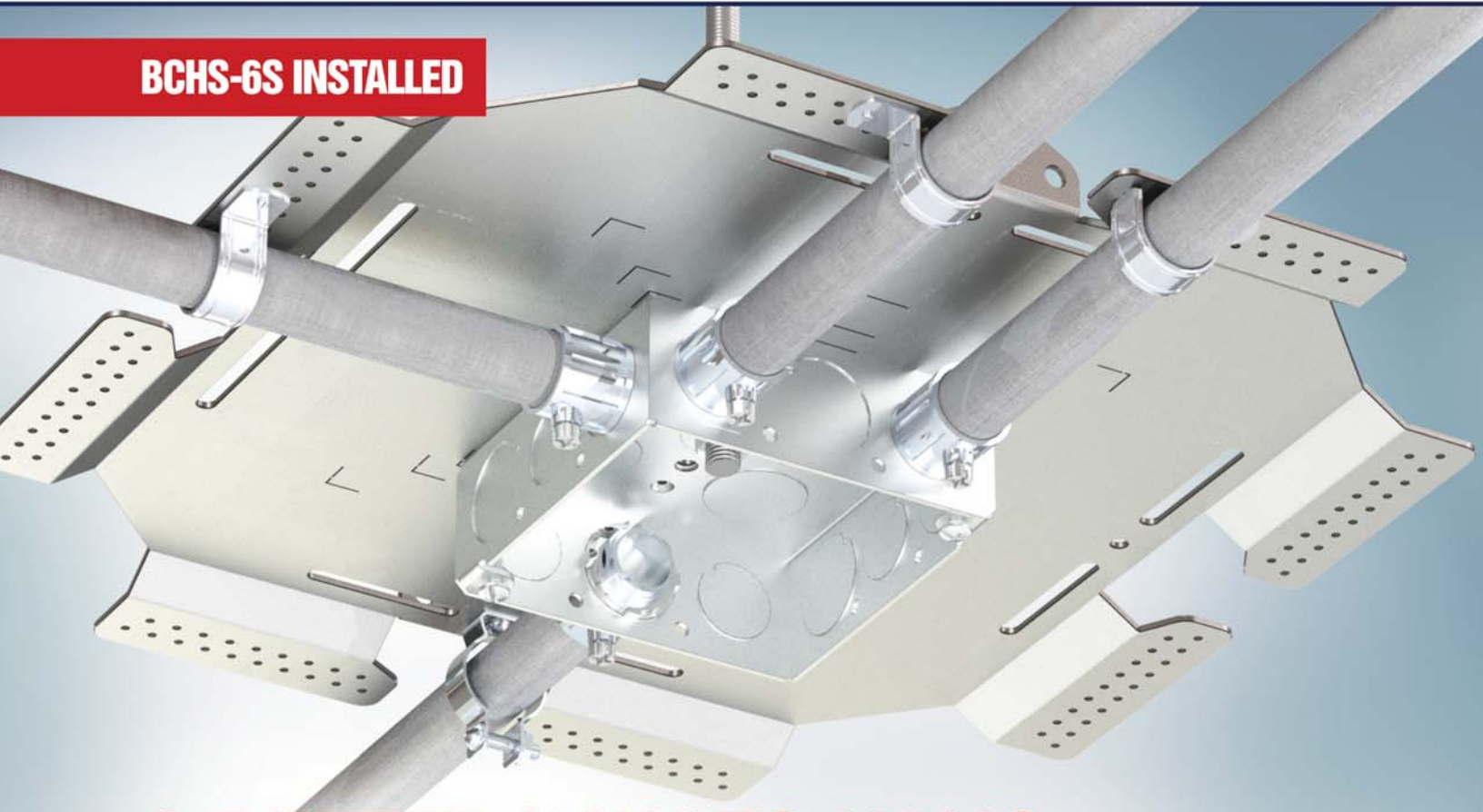


BOX AND CONDUIT HANGER SUPPORT

orbit
Orbit Industries, Inc.

BCHS-6S INSTALLED



A BETTER WAY TO HANG BOXES AND CONDUITS

Traditional Method



This application would require installer to measure and cut five pieces of threaded rod. Use only one rod with Orbit's BCHS Series.

Orbit's Box and Conduit Hanger Support (BCHS) series is an innovative solution for hanging boxes and conduits using one plate and rod rather than multiple.

Vertical and horizontal mounting available on various models

Can be easily preassembled to reduce installation time and improve safety

Rated for up to 100 lbs

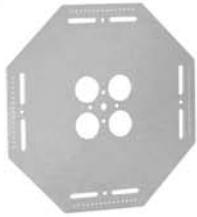
PATENTED



BOX AND CONDUIT HANGER SUPPORT



BCHS SERIES



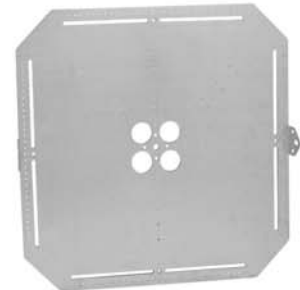
BCHS - 10



BCHS - 6



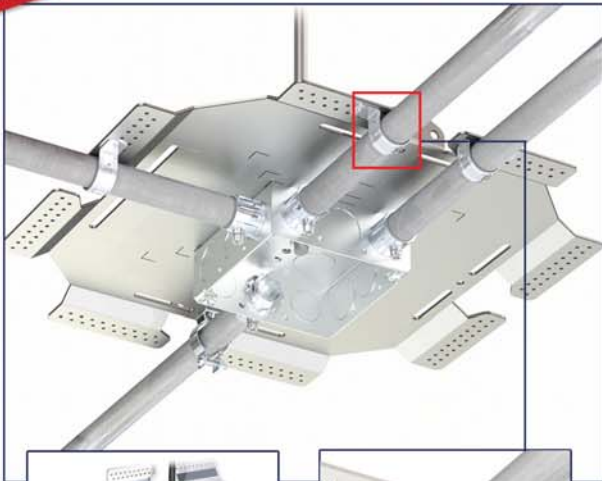
BCHS - 6S



BCHS - 12

INSTALLATION

BCHS - 6S



Vertical Mounting

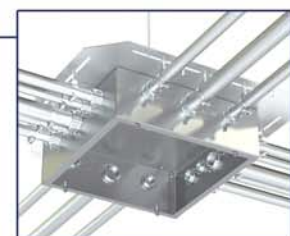


Allows for use of one-hole strap

BCHS - 12



Hang a 12" x 12" box or multiple small size boxes horizontally or vertically



FEATURES

- Stamped markings provide guidelines
- Self-reinforcing as more conduit added
- No cutting required
- Pin holes and slots allow for use of self-tapping screws and conduit straps

| Cat. No. | Description | Std. Pkg. |
|-----------|---|-----------|
| BCHS - 10 | A cost-effective solution that fits up to 6" x 6" boxes | 25 |
| BCHS - 6 | Fits up to 6" x 6" boxes and has bent tabs for vertical mounting | 10 |
| BCHS - 6S | Flanges for use of one-hole straps and fits up to 8" x 8" boxes. Bent tabs for vertical mounting | 10 |
| BCHS - 12 | Hang a 12" x 12" box or multiple small size boxes, up to 100 lbs. Bent tabs for vertical mounting | 5 |