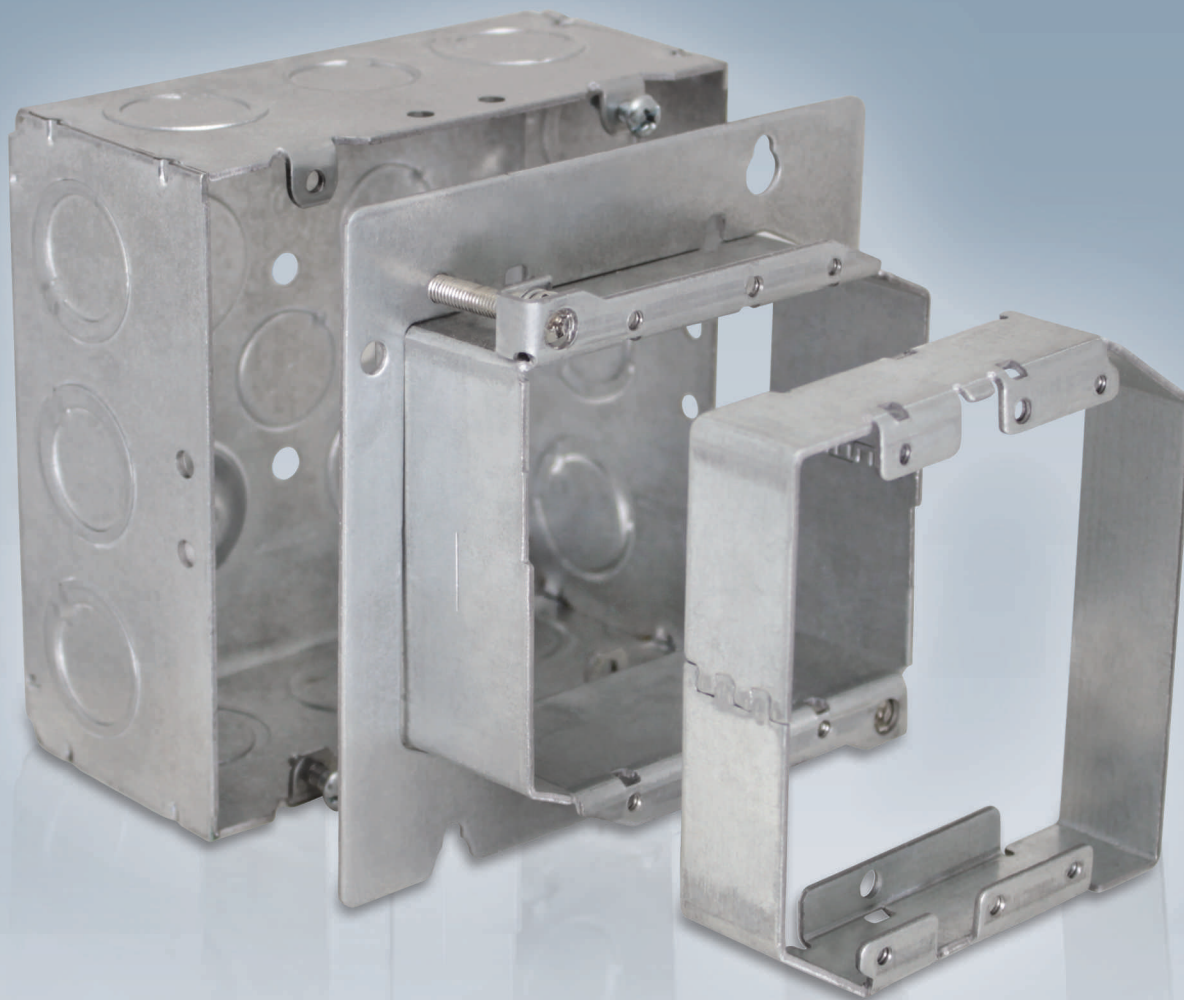


ADJUSTABLE PLASTER RING SERIES



Orbit's adjustable prefab rings provide labor-saving solutions when finished wall depths are unknown.

- Replaces over 40 different standard device rings
- Rings achieve a flush finish every time
- Extensions and Stud Mounting Rings also available

PATENTED

WIDEST VARIETY
OF ADJUSTABLE RINGS IN THE INDUSTRY



NOW AVAILABLE!

UL-Approved Adjustable Rings



1 & 2 GANG ADJUSTABLE RINGS



ADJUSTABLE RINGS

PRODUCT FEATURES

- Available for 4" (4S) and 4-11/16" (5S) square boxes
- 1/4" to 1-1/4" adjustability range
- Provides flexibility at the job site
- Compatible with exclusive *extensions* for infinite wall depths

INDUSTRIES' ONLY 5S ADJUSTABLE RINGS



4SAR1G



4SAR2G



UPC



5SAR1G



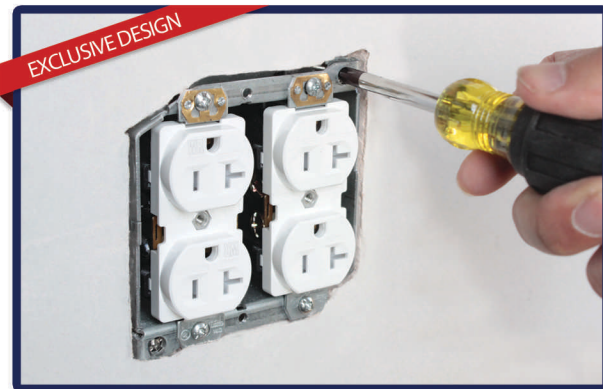
5SAR2G



UPCTS



*Complete UPC
Assembly with
Toggle Switch
Shown Installed*



Corner screws are easily accessible for adjustment before and after the device has been installed

Cat. No.	Description	Adjustability Range	With One Extension Installed		Std. Pkg.
			+1GX75	+2GX75	
4SAR1G	1-Gang Adjustable ring for 4S Deep Boxes	1/4" to 1-1/4"	1" to 2"	-	25
4SAR2G	2-Gang Adjustable ring for 4S Deep Boxes	1/4" to 1-1/4"	-	1" to 2"	25
5SAR1G	1-Gang Adjustable ring for 5S Deep Boxes	1/4" to 1-1/4"	1" to 2"	-	25
5SAR2G	2-Gang Adjustable ring for 5S Deep Boxes	1/4" to 1-1/4"	-	1" to 2"	25
UPC	Gangable, Steel Universal Protective Cover protects any device during drywall, painting, routing, mudding & plastering				25
UPCTS	Optional Plastic Insert for UPC to protect Toggle Switch				25

EXTENSIONS & STUD MOUNTING ADJUSTABLE RINGS



EXTENSIONS

PRODUCT FEATURES

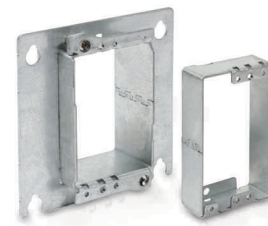
- Extensions ensure flush finish for thicker finished walls
- Attaches to adjustable ring for additional 3/4" of depth
- Mounts easily to ring with two 8-32 screws
- Multiple extensions can be installed on one ring



1GX75



2GX75



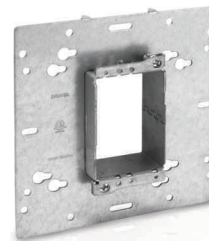
4SAR1G
+ 1GX75
Exploded
View

Cat. No.	Description	For Use With	Std. Pkg.
1GX75	1-Gang 3/4" Extension	4SAR1G, 5SAR1G or WBAR1G	25
2GX75	2-Gang 3/4" Extension	4SAR2G, 5SAR2G or WBAR2G	25

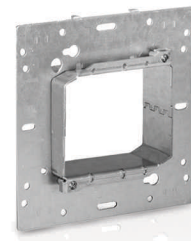
STUD MOUNTING ADJUSTABLE RINGS

PRODUCT FEATURES

- Accepts 4" (4S) or 4-11/16" (5S) square boxes in line voltage applications
- Mounts to any stud, shear wall, 6 x 6" NEMA 1 enclosure or Orbit's Ultimate Support Bracket (USB)
- Can be used standalone for low voltage communications applications

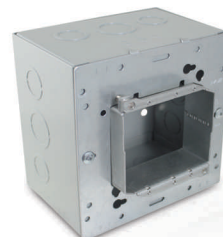


WBAR1G

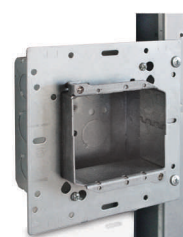


WBAR2G

Fits
6x6"
NEMA



WBAR2G
Shown
Installed



Cat. No.	Description	Adjustability Range	With One Extension Installed		Std. Pkg.
			+1GX75	+2GX75	
WBAR1G	1-Gang Universal Box Bracket	1/4" to 1-1/4"	1" to 2"	-	25
WBAR2G	2-Gang Universal Box Bracket	1/4" to 1-1/4"	-	1" to 2"	25

UL-APPROVED ADJUSTABLE RINGS



UL-Approved Adjustable Rings

PRODUCT FEATURES

- Can be adjusted on the jobsite for a quick installation
- Adjusts to achieve a flush finish every time
- Patented design provides strong electrical and mechanical connections to meet UL requirements



4AR1G-58



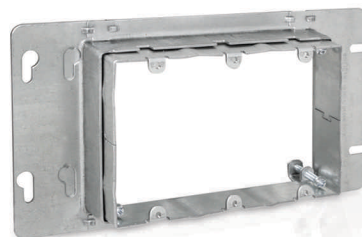
4AR1G-34



4AR2G-58



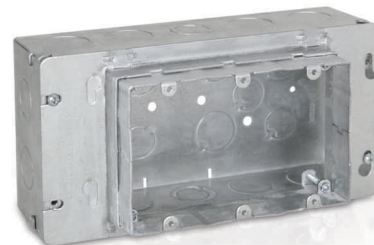
4ARR-34



3GAR-34



4ARR-34
Shown Installed



3GAR-34
Shown Installed

Cat. No.	Description	Adjustability Range	Std. Pkg.
4AR1G-58	1-Gang Adjustable ring for 4S Deep Boxes	5/8" to 1-1/4"	25
4AR1G-34	1-Gang Adjustable ring for 4S Deep Boxes	3/4" to 1-1/2"	25
4AR2G-58	2-Gang Adjustable ring for 4S Deep Boxes	5/8" to 1-1/4"	25
4ARR-34	Round Adjustable ring for 4S Deep Boxes	3/4" to 1-1/2"	25
3GAR-34	3-Gang Adjustable ring	3/4" to 1-1/2"	25