

INSTALLATION INSTRUCTIONS



WARNING: All work must be performed by qualified electrician. Luminaire must be installed and grounded in accordance with the National Electrical Code (NEC) and local codes. Failure to do so may result in serious injury and/or damage to the luminaire.

WARNING: To avoid risk of fire, explosion, or electric shock, this product should be installed, inspected, and maintained by a qualified electrician only and in accordance with all applicable codes.

WARNING: To avoid electric shock: Be certain electrical power is OFF before and during installation and maintenance. Luminaire must be connected to a wiring system with an equipment grounding conductor.

WARNING:

Make sure the supply voltage is the same as the rated luminaire voltage.

Do not install where marked operating temperatures exceed the ignition temperature of the hazardous atmosphere.

Do not operate in ambient temperatures above those indicated on the luminaire nameplate.

Keep lens tightly closed when in operation. Do not touch the fixture while it is in service.

If there is any problem with the fixture, DO turn off power and DO NOT attempt repair unless you are a qualified technician

This product is not available for several special environments, such as places with corrosive gas liquids or high pressure water vapor.

NOTE: Save these instructions for future reference.

Pendant Mount:

1. To prevent electrical shock, disconnect power from electrical supply before installation or service.
2. Check the fixture location and wiring location before installing the Adjustable Suspension Kit (Included). Fig 1.
3. Drill 2-holes on the ceiling to install hooks (by others) to be used for hanging adjustable suspension kit.
4. Install the adjustable suspension kit to the fixture at both ends. Fig 2.
5. Hang the fixture to the ceiling hook and adjust the length according to your height requirements. See Fig 3. for adjustment.
6. Remove the access plate, take the wires out through the hole of access plate, and connect the line wires, black to black, white to white and green to green. Insert the conduit into the hole of access plate, re-install the plate.
7. Installing SENSOR/DIMMER. Take off the cover at the front, install sensor/dimmer (sold separately) in the middle knock-out and follow wiring instruction of the sensor/dimmer. Same as the Emergency Backup kit. Fig 4.
8. Turn ON power and check for proper operation.

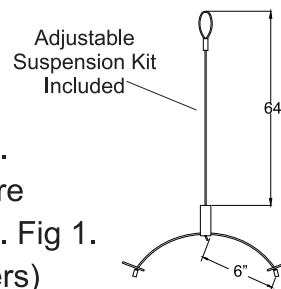


FIG. 1

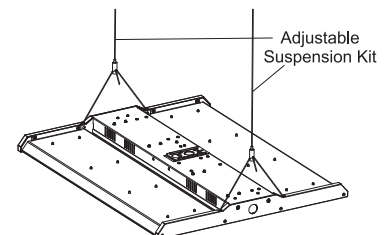


FIG. 2

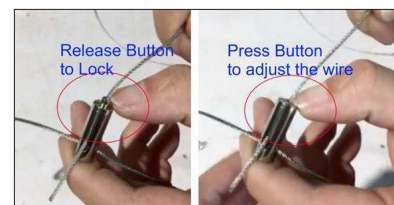
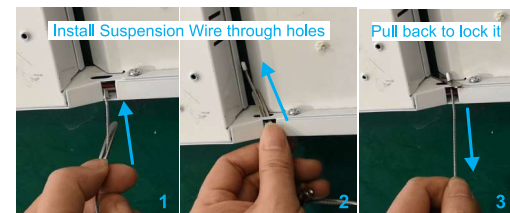


FIG. 3

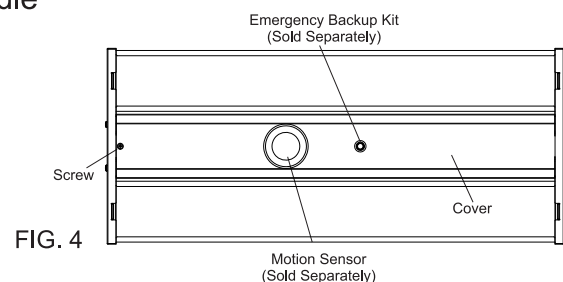


FIG. 4

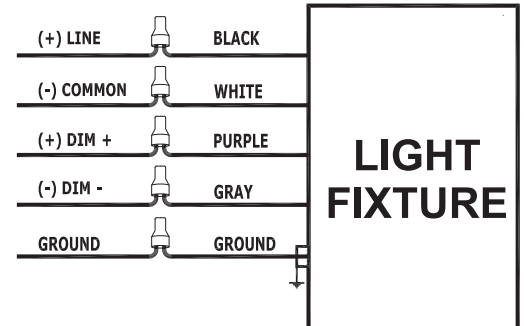
INSTALLATION INSTRUCTIONS

WIRING:

1. Connect the black fixture lead to the (+) LINE supply lead.
2. Connect the white fixture lead to the (-) COMMON supply lead.
3. Connect the GROUND wire from fixture to supply ground. Do NOT connect the GROUND of the dimming fixture to the output.

For 1-10V Dimming:

4. Connect the purple fixture lead to the (V+) DIM lead.
5. Connect the gray fixture lead to the (V-) DIM lead.



TROUBLESHOOTING:

1. Check that the line voltage at the fixture is correct. Refer to wiring directions.
2. Check if the fixture is grounded properly
3. Be sure the motion sensor, if used, is functioning properly.

CLEANING & MAINTENANCE:

CAUTION:

1. Be sure fixture temperature is cool enough to touch.
2. Do not clean or maintain while fixture is in operation.

MODEL NO.	INPUT VOLTAGE	WATTS	FREQUENCY	DIMMING
LLHB2-FL-90W-CW	120 ~ 277V	90W	60Hz	1-10V
LLHB2-FL-130W-CW	120 ~ 277V	130W	60Hz	1-10V
LLHB2-FL-180W-CW	120 ~ 277V	180W	60Hz	1-10V