

LARGE CAPACITY BOXES

TRUE 5" SQUARE BOXES

WELDED

3-1/4" DEEP

71.8 Cu. In.

WITH RAISED GROUND EMBOS

PRODUCT FEATURES

- ▶ More than double capacity compared to 4" square boxes
- ▶ Extra space easily meets minimum bend radius for easier installations
- ▶ Increased space reduces short circuits and ground faults due to space and cable stress
- ▶ Supports all current copper CAT and fiber optic cables as well as predicted increases
- ▶ Use T5R or any Orbit 5" Sq. Box Mounting Brackets to use 4" rings on 5" boxes



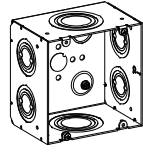
**Video Available
On Our Website!**

Cat. No.	Description	Sides	Bottom	Std. Pks.
*T5B-200	True 5" Square Box	2 - 1" to 2" CKOs 4 - 1/2" to 1-1/4" CKOs	1 - 1/2" & 3/4" MKOs 1 - 3/4" & 1" MKOs 1 - 1/2" KO & Two Ground Screws On Bottom	10
T5B-50/200	True 5" Square Box, 1/2" KO & 2" MKO	2 - 1" to 2" CKOs 4 - 1/2" & 3/4" CKOs 8 - 1/2" KO	1 - 1/2" & 3/4" MKOs 1 - 3/4" & 1" MKOs 1 - 1/2" KO	10
T5B-50/75 NEW	True 5" Square Box, 1/2" KO & 3/4" KO	8 - 1/2" & 3/4" CKOs 16 - 1/2" KO	1 - 1/2" & 3/4" MKOs 1 - 3/4" & 1" MKOs 1 - 1/2" KO	10

*T5B-200 Side KO Spec updated Sept.2023



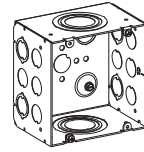
*T5B-200



*T5B-200
5" x 5" x 3-1/4"



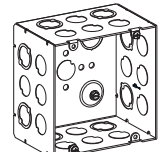
T5B-50/200



T5B-50/200
5" x 5" x 3-1/4"



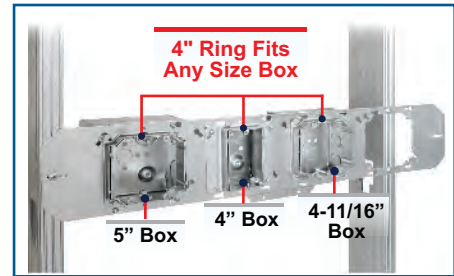
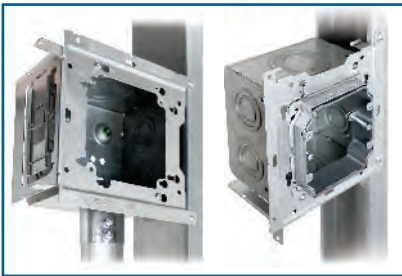
T5B-50/75



T5B-50/75
5" x 5" x 3-1/4"

Largest Selection of 5" Square Box Brackets — All Compatible with 4" Rings!

INSTALLATION



Direct-to-Stud (UMA-LVBS)

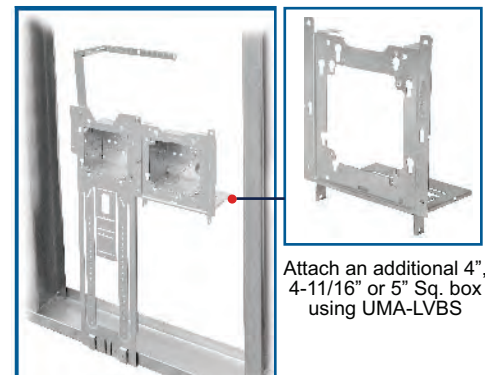
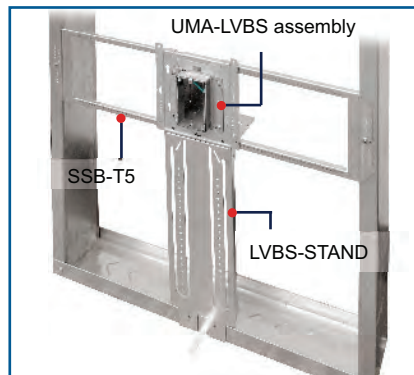
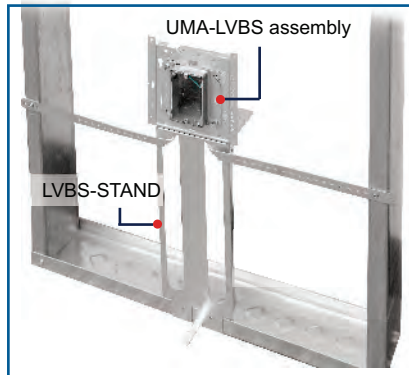
Mount 4" Rings on 5" Boxes with UMA-LVBS

Between Studs (UMA-LVBS + SSB-T5)

Snap UMA-LVBS onto SSB-T5 (pg. 1) to position the box exactly where you want

Between Studs (FB-4)

Compatible with Orbit's Flat Bracket Family (pg. 15) and Fixed Mounting Brackets (pg. 17)



Floor Bracket (LVBS-STAND + UMA-LVBS)

UMA-LVBS snaps onto LVBS-STAND to set box center at 18"

Floor Bracket (KB-18)

Traditional floor bracket that sets box center at 18" and allows use of a 4" ring on a 5" box. Add additional boxes using UMA-LVBS