

EASY HANG BOXES & SURFACE MOUNTING BOX

EASY ACCESS LIGHTING BOX 2-1/8" DEEP 30.3 Cu. In.

PRODUCT FEATURES

- ▶ Fast and efficient installations
- ▶ Sliding cover plate for one person installations
- ▶ Swivel reduces damage to hanging fixtures when struck
- ▶ Complies with NEC 314.27 (A)(D) for up to 90 lbs. of fixture load

PATENTED

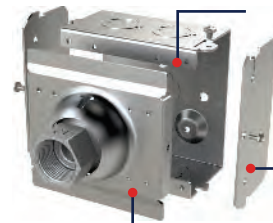
**ORBIT INDUSTRIES
EXCLUSIVE**



**Video Available
On Our Website!**

Cat. No.	Description	Dimensions (W x H)	Knockouts		Std. Pkq.
			Sides	Bottom	
EALBS	Easy Access Lighting Box with Sliding Swivel	4" X 4"	4 - CKO	3 - 1/2", 1 - 3/4"	10

Only box UL-Listed for up to 90 lbs. of fixture load!

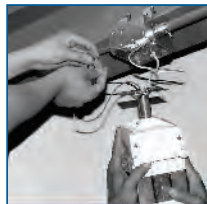


SWIVEL COVER PLATE
20° Swivel Angle – Fits 3/4" conduit

DETACHABLE SIDES
For easy wiring

BOTTOM TABS
For sliding cover plates

**50%
LABOR
SAVINGS**



TRADITIONAL METHOD

Requires two installers



WITH ORBIT'S EALBS

Install Swivel Plate on lighting fixture and slide it into the box. One installer completes wiring while fixture hangs

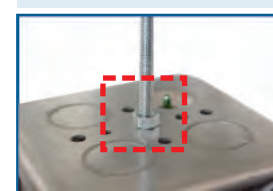
EZ-HANG BOXES WELDED OR DRAWN 2-1/8" DEEP WITH RAISED GROUND EMBOSS

PRODUCT FEATURES

- ▶ Back-center K.O. replaced with through hole eliminating need for washer or punching back-center K.O. when mounting boxes in suspended application.
- ▶ **4SDB-MKO-S**: 0.395" diameter hole (for 3/8" rod)
- ▶ **D5SDB-CKO-S**: 0.27" diameter hole (for 1/4" rod)

Cat. No.	Description	Cu. In.	Knockouts		Std. Pkq.
			Sides	Bottom	
4SDB-MKO-S <small>NEW</small>	4" Sq. Welded Special Box with MKO	30.3	8 - 1/2", 4 - MKO	1 - 1/2", 2 - MKO	24
D5SDB-CKO-S	4-11/16" Sq. Drawn Special Box with CKO	42.0	2 - 1/2", 10 - CKO	3 - 3/4"	24

NEW



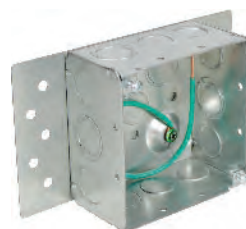
Secure to ceiling with just a rod and locknut
4SDB-MKO-S 3/8" ROD
D5SDB-CKO-S 1/4" ROD

4" SQUARE DEEP BOX WELDED 2-1/8" DEEP 30.3 Cu. In. WITH BACK PLATE & RAISED GROUND EMBOSS

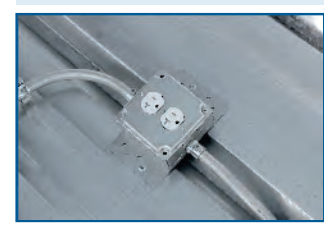
PRODUCT FEATURES

- ▶ Can be surface mounted without opening the box
- ▶ Flat back plate allows pre-wiring with device/cover
- ▶ Includes 10" Solid Cu. #12AWG Pigtail and 10-32 Ground Screw
- ▶ Mounts to ceilings, walls, corrugated surfaces, or counters
- ▶ For Fixture/Luminaire Support of 50 lbs or less

Cat. No.	Description	Knockouts		Std. Pkq.
		Sides	Bottom	
4SDB-BP	4SDB-MKO-PT-10 with Back Plate, 10" Pigtail	8 - 1/2", 4 - MKO	2 - 1/2", 2 - MKO	24



Updated back plate provides access to rear K.O.'s



Mount to ceilings, walls, corrugated surfaces, or underneath counters