

BOX MOUNTING ADAPTERS & SOG-AP

BOX MOUNTING ADAPTER

PRODUCT FEATURES

- ▶ Compatible with 4" & 4-11/16" sq. boxes
- ▶ Adjustable Back Support helps maintain rigidity when installed
- ▶ Low profile design limits drywall bulging
- ▶ For use with metal or wood studs

BMA-4 Only

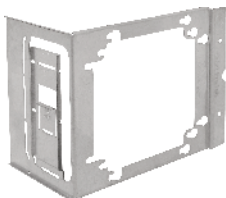
- ▶ 4" Ring can be mounted without box for low voltage applications with #8-32 screws

BMA-26 Only

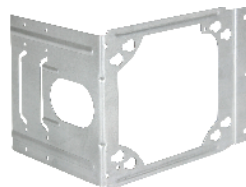
- ▶ Compatible with Standard & Adj. Rings mounted vertically or horizontally
- ▶ Unique key-hole pattern allows boxes to be turned 90 degrees

Cat. No.	Description	Std. Pkg.
BMA-26 <small>NEW</small>	Box Mounting Adapter with 2-1/2" to 6" Far-side Back Support	25
BMA-4	Box Mounting Adapter with up to 4" Far-side Back Support	25
*FS-456-EXT	Far-side Support Extender for up to 6" Studs, Compatible with BMA-4, tool-less	50

NEW



BMA-26

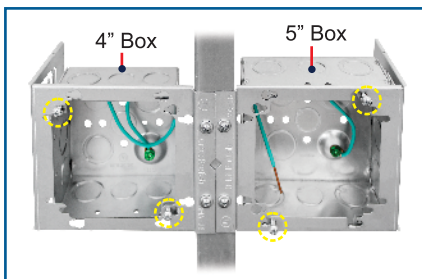


BMA-4

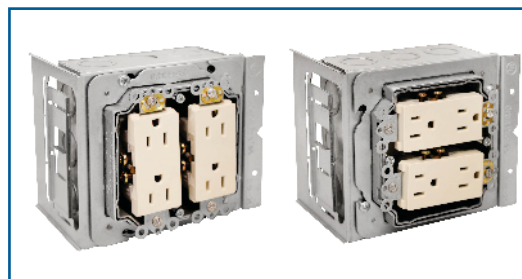


*FS-456-EXT

Up to 6" Far-side Support!



TURN ANY 4" or 4-11/16" SQ. BOX 90°



VERTICAL & HORIZONTAL RING

SLAB-ON-GRADE ADJUSTABLE PLATFORM

PRODUCT FEATURES

- ▶ Fits most Commercial Floor Boxes
- ▶ Compatible with 1/2" EMT Conduit or Rebar
- ▶ Quickest way to support slab-on-grade floor boxes prior to concrete installation
- ▶ Set-Screw connectors have tri-combo screw
- ▶ 15GA Sheet Steel
- ▶ BABA Compliant

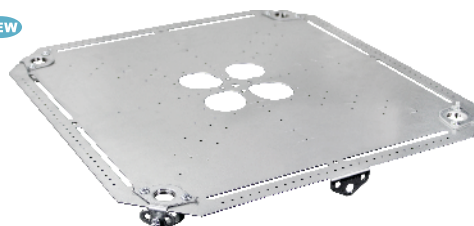
PATENTED



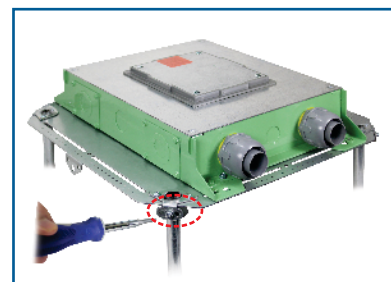
Cat. No.	Description	Platform Dimension	Std. Pkg.
SOG-AP <small>NEW</small>	Slab-On-Grade Adjustable Platform for Commercial Cast, Steel or PVC Floor Box	18" x 18"	5



NEW



SOG-AP



Patented Quick Set-Screw Height Adjustment

BEST WAY TO INSTALL COMMERCIAL CAST, STEEL & PVC FLOOR BOXES



*While Supplies Last