



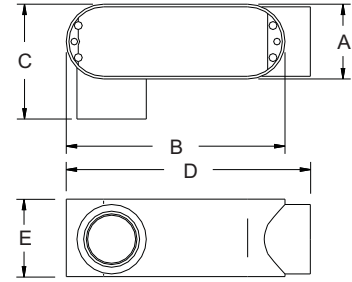
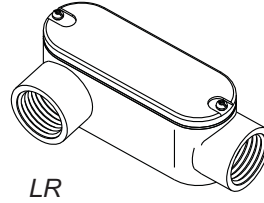
DIE CAST COPPER-FREE ALUMINUM THREADED CONDUIT BODIES "LR" SERIES

PRODUCT FEATURES

- ▶ With Die Cast Cover and Neoprene Gasket
- ▶ Gray color



Cat. No.	Trade Size	DIMENSIONS - LR SERIES					Std. Pkg.
		A	B	C	D	E	
LR-50A	1/2"	1-5/16"	3-7/8"	2-1/32"	4-5/16"	1-3/8"	10
LR-75A	3/4"	1-9/16"	4-11/16"	2-5/16"	5-3/32"	1-5/8"	10
LR-100A	1"	1-13/16"	5-3/8"	2-11/16"	5-29/32"	1-7/8"	5
LR-125A	1-1/4"	2-1/2"	7-5/16"	3-1/2"	7-13/16"	2-1/2"	2
LR-150A	1-1/2"	2-1/2"	7-5/16"	3-1/2"	7-13/16"	2-1/2"	2
LR-200A	2"	3-3/16"	9-1/2"	4-9/32"	10-1/16"	3-3/8"	1
LR-250A	2-1/2"	4-1/2"	12-1/16"	5-7/8"	12-13/16"	4"	1
LR-300A	3"	4-1/2"	12-1/16"	5-7/8"	12-13/16"	4-1/2"	1
LR-400A	4"	5-9/16"	15-1/16"	7-21/32"	15-5/8"	5-5/8"	1



Electrical Fittings

DIE CAST COPPER-FREE ALUMINUM THREADED CONDUIT BODIES "C" SERIES

PRODUCT FEATURES

- ▶ With Die Cast Cover and Neoprene Gasket
- ▶ Gray color



Cat. No.	Trade Size	DIMENSIONS - C SERIES					Std. Pkg.
		A	B	C	D	E	
C-50A	1/2"	1-5/16"	3-7/8"	1-3/8"	4-11/16"	1-1/16"	10
C-75A	3/4"	1-9/16"	4-11/16"	1-5/8"	5-1/2"	1-5/16"	10
C-100A	1"	1-13/16"	5-3/8"	1-7/8"	6-7/16"	1-9/16"	5
C-125A	1-1/4"	2-1/2"	7-5/16"	2-1/2"	8-3/8"	1-31/32"	2
C-150A	1-1/2"	2-1/2"	7-5/16"	2-1/2"	8-3/8"	2-3/16"	2
C-200A	2"	3-3/16"	9-1/2"	3-3/8"	10-9/16"	2-11/16"	1
C-250A	2-1/2"	4-1/2"	12-1/16"	4"	13-1/2"	3-5/16"	1
C-300A	3"	4-1/2"	12-1/16"	4-1/2"	13-1/2"	3-15/16"	1
C-400A	4"	5-9/16"	15-1/16"	5-5/8"	16-5/16"	4-31/32"	1

