

SPRING STEEL
CABLE/CONDUIT TO STUD
ATTACHMENTS

PRODUCT FEATURES

- Supports EMT conduit or MC/AC cable
- Ensures conduit is in-line with junction box knockout
- Allows for overlap of other fasteners sharing the same screw(s)
- For wood or metal studs
- Eliminates offset bending of conduit
- Complies with NEC® Article 358.30(A), which requires conduit support within 36" of an electrical box
- Complies with CEC Rule 12-1404, which requires conduit support within 1 m of an electrical box
- Complies with CEC Rule 12-618, which requires support of armoured cable within 300 mm (12") of an electrical box

Cat. No.	EMT Size	Box Depth	Std. Pkg.
FCS812	1/2", 3/4"	1-1/2"	100
FCS812D	1/2", 3/4"	2-1/8"	100
FCS16	1"	2-1/8"	100

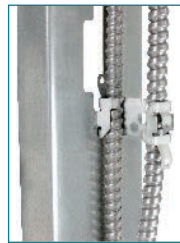
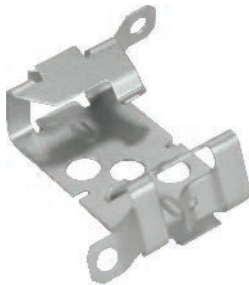


SPRING STEEL
MC/AC CABLE TO STUD CLIP

PRODUCT FEATURES

- No tools required to install
- Holes in clip allow it to be screwed into wood stud, concrete or block
- Stabilizer legs provide "wobble-free" support
- Compliant with NEC® Article 300.4(d), allowing cable to be positioned a minimum of 1-1/4" from face of stud
- Compliant with CEC Rule 12-618 for support of MC/AC cable
- Snaps in half, making two clips out of one

Cat. No.	Flange Thickness	MC/AC Size	Std. Pkg.
FMAC2	1/8" MAX	14/2 to 10/3	100



SPRING STEEL
MC/AC CABLE TO
METAL STUD CLIP

PRODUCT FEATURES

- Easy installation of MC/AC to metal stud
- No tools required to install

Cat. No.	Outer Diameter	MC/AC Size	Std. Pkg.
MSC	0.429" - 0.531"	14/2 to 12/3	100

