

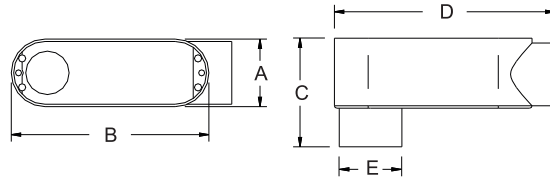
E9 | Combo Conduit Bodies - Aluminum

DIE CAST COPPER-FREE ALUMINUM COMBO CONDUIT BODIES "LB" SERIES

PRODUCT FEATURES

- ▶ Stamped Aluminum Cover and Neoprene Gasket Included
- ▶ Gray Body
- ▶ Compatible with RIGID/IMC and EMT Conduit
- ▶ 1/2" to 2": NPT Thread Hubs & Set-Screw
- ▶ 2-1/2" to 4": Set-Screw Only
- ▶ Suitable for wet location when using threaded connection with rigid conduit and with Gasket and Cover
- ▶ Threaded models are NEMA 2, 3, 3R, and 4 rated

Cat. No.	Trade Size	DIMENSIONS - LB SERIES					Std. Pkg.	Master Ctn.
		A	B	C	D	E		
CLB-50AS NEW	1/2"	1-5/16"	3-7/8"	2-5/16"	4-5/16"	1"	10	40
CLB-75AS NEW	3/4"	1-1/2"	4-5/8"	2-5/8"	5-1/16"	1-1/4"	10	40
CLB-100AS NEW	1"	1-13/16"	5-5/16"	3"	5-7/8"	1-9/16"	5	20
CLB-125AS NEW	1-1/4"	2-1/2"	7-1/4"	3-3/4"	7-13/16"	2"	2	8
CLB-150AS NEW	1-1/2"	2-1/2"	7-1/4"	3-3/4"	7-13/16"	2-3/16"	2	8
CLB-200AS NEW	2"	3-3/16"	9-9/16"	4-5/8"	10"	2-11/16"	1	-
CLB-250AS NEW	2-1/2"	4-9/16"	12-1/4"	5-1/2"	12-7/8"	3-5/16"	1	-
CLB-300AS NEW	3"	4-9/16"	12-1/4"	6-1/16"	12-7/8"	3-15/16"	1	-
CLB-350AS NEW	3-1/2"	5-5/8"	15"	7-1/16"	15-9/16"	5"	1	-
CLB-400AS NEW	4"	5-5/8"	15"	7-1/16"	15-9/16"	5"	1	-

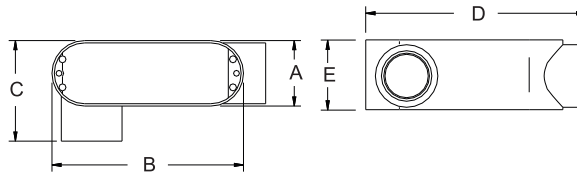


DIE CAST COPPER-FREE ALUMINUM COMBO CONDUIT BODIES "LL" SERIES

PRODUCT FEATURES

- ▶ Stamped Aluminum Cover and Neoprene Gasket Included
- ▶ Gray Body
- ▶ Compatible with RIGID/IMC and EMT Conduit
- ▶ NPT Thread Hubs & Set-Screws
- ▶ Suitable for wet location when using threaded connection with rigid conduit and with Gasket and Cover
- ▶ NEMA 2, 3, 3R, and 4 rated

Cat. No.	Trade Size	DIMENSIONS - LL SERIES					Std. Pkg.	Master Ctn.
		A	B	C	D	E		
CLL-50AS NEW	1/2"	1-5/16"	3-7/8"	2"	4-5/16"	1-9/16"	10	40
CLL-75AS NEW	3/4"	1-1/2"	4-5/8"	2-5/16"	5-1/16"	1-13/16"	10	40
CLL-100AS NEW	1"	1-13/16"	5-5/16"	2-11/16"	5-7/8"	2-1/8"	5	20
CLL-125AS NEW	1-1/4"	2-1/2"	7-1/4"	3-1/2"	7-13/16"	2-3/4"	2	8
CLL-150AS NEW	1-1/2"	2-1/2"	7-1/4"	3-1/2"	7-13/16"	2-3/4"	2	8
CLL-200AS NEW	2"	3-3/16"	9-9/16"	4-1/4"	10"	3-5/8"	1	-

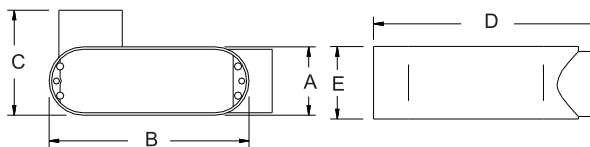


DIE CAST COPPER-FREE ALUMINUM COMBO CONDUIT BODIES "LR" SERIES

PRODUCT FEATURES

- ▶ Stamped Aluminum Cover and Neoprene Gasket Included
- ▶ Gray Body
- ▶ Compatible with RIGID/IMC and EMT Conduit
- ▶ NPT Thread Hubs & Set-Screws
- ▶ Suitable for wet location when using threaded connection with rigid conduit and with Gasket and Cover
- ▶ NEMA 2, 3, 3R, and 4 rated

Cat. No.	Trade Size	DIMENSIONS - LR SERIES					Std. Pkg.	Master Ctn.
		A	B	C	D	E		
CLR-50AS NEW	1/2"	1-5/16"	3-7/8"	2"	4-5/16"	1-9/16"	10	40
CLR-75AS NEW	3/4"	1-1/2"	4-5/8"	2-5/16"	5-1/16"	1-13/16"	10	40
CLR-100AS NEW	1"	1-13/16"	5-5/16"	2-11/16"	5-7/8"	2-1/8"	5	20
CLR-125AS NEW	1-1/4"	2-1/2"	7-1/4"	3-1/2"	7-13/16"	2-3/4"	2	8
CLR-150AS NEW	1-1/2"	2-1/2"	7-1/4"	3-1/2"	7-13/16"	2-3/4"	2	8
CLR-200AS NEW	2"	3-3/16"	9-9/16"	4-1/4"	10"	3-5/8"	1	-



1/2" to 1"



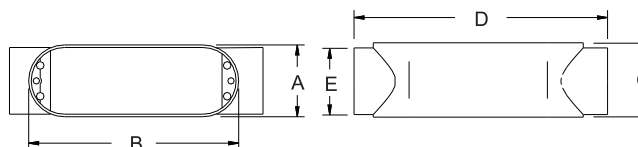
1-1/4" to 2"

DIE CAST COPPER-FREE ALUMINUM COMBO CONDUIT BODIES "C" SERIES

PRODUCT FEATURES

- ▶ Stamped Aluminum Cover and Neoprene Gasket Included
- ▶ Gray Body
- ▶ Compatible with RIGID/IMC and EMT Conduit
- ▶ NPT Thread Hubs & Set-Screws
- ▶ Suitable for wet location when using threaded connection with rigid conduit and with Gasket and Cover
- ▶ NEMA 2, 3, 3R, and 4 rated

Cat. No.	Trade Size	DIMENSIONS - C SERIES					Std. Pkg.	Master Ctn.
		A	B	C	D	E		
CC-50AS NEW	1/2"	1-5/16"	3-7/8"	1-9/16"	4-3/4"	1"	10	40
CC-75AS NEW	3/4"	1-1/2"	4-5/8"	1-13/16"	5-1/2"	1-1/4"	10	40
CC-100AS NEW	1"	1-13/16"	5-5/16"	2-1/8"	6-7/16"	1-9/16"	5	20
CC-125AS NEW	1-1/4"	2-1/2"	7-1/4"	2-3/4"	8-5/16"	2"	2	8
CC-150AS NEW	1-1/2"	2-1/2"	7-1/4"	2-3/4"	8-5/16"	2-3/16"	2	8
CC-200AS NEW	2"	3-3/16"	9-9/16"	3-5/8"	10-9/16"	2-11/16"	1	-



1/2" to 1"



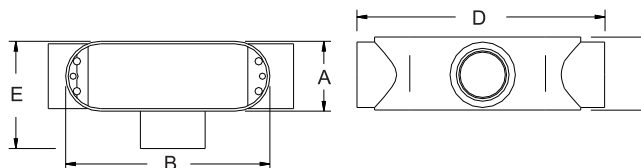
1-1/4" to 2"

DIE CAST COPPER-FREE ALUMINUM COMBO CONDUIT BODIES "T" SERIES

PRODUCT FEATURES

- ▶ Stamped Aluminum Cover and Neoprene Gasket Included
- ▶ Gray Body
- ▶ Compatible with RIGID/IMC and EMT Conduit
- ▶ NPT Thread Hubs & Set-Screws
- ▶ Suitable for wet location when using threaded connection with rigid conduit and with Gasket and Cover
- ▶ NEMA 2, 3, 3R, and 4 rated

Cat. No.	Trade Size	DIMENSIONS - T SERIES					Std. Pkg.	Master Ctn.
		A	B	C	D	E		
CT-50AS NEW	1/2"	1-5/16"	3-7/8"	1-9/16"	4-3/4"	2"	10	40
CT-75AS NEW	3/4"	1-1/2"	4-5/8"	1-13/16"	5-1/2"	2-5/16"	10	40
CT-100AS NEW	1"	1-13/16"	5-5/16"	2-1/8"	6-7/16"	2-11/16"	5	20
CT-125AS NEW	1-1/4"	2-1/2"	7-1/4"	2-3/4"	8-5/16"	3-1/2"	2	8
CT-150AS NEW	1-1/2"	2-1/2"	7-1/4"	2-3/4"	8-5/16"	3-1/2"	2	8
CT-200AS NEW	2"	3-3/16"	9-9/16"	3-5/8"	10-9/16"	4-1/4"	1	-



1/2" to 1"



1-1/4" to 2"

