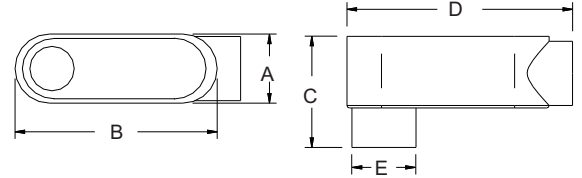


SAND CAST CLASS 30 GRAY IRON ALLOY
THREADED CONDUIT BODIES
"LB" SERIES
FORM 7

PRODUCT FEATURES

- ▶ Electroplated Zinc
- ▶ Flat back design for maximum internal wiring volume
- ▶ Interchangeable with other Form 7 conduit bodies
- ▶ Suitable for wet location when used with Gasket and Cover
- ▶ Use with easy Clip-on Covers
- ▶ NPT Thread Hubs

Cat. No.	Trade Size	DIMENSIONS - LB SERIES					Std. Pkg.	Master Ctn.
		A	B	C	D	E		
LB7-50	1/2"	1-3/8"	3-11/16"	2-3/16"	4-1/2"	1-1/4"	10	50
LB7-75	3/4"	1-5/8"	4-5/16"	2-1/2"	5-1/4"	1-1/2"	5	25
LB7-100	1"	1-13/16"	5-1/16"	2-7/8"	6-3/16"	1-13/16"	5	25
LB7-125	1-1/4"	2-3/16"	5-9/16"	3-1/4"	6-1/2"	2-3/16"	1	10
LB7-150	1-1/2"	2-7/16"	6-1/16"	3-9/16"	7-1/16"	2-7/16"	1	10
LB7-200	2"	3"	7-1/16"	4-1/8"	8-1/8"	3"	1	5
LB7-250	2-1/2"	4-1/4"	9-1/16"	5-1/4"	10-11/16"	3-7/16"	-	1
LB7-300	3"	4-1/4"	9-1/16"	6"	10-11/16"	4-1/4"	-	1
LB7-350	3-1/2"	5-5/16"	11"	6-9/16"	12-3/4"	4-3/4"	-	1
LB7-400	4"	5-5/16"	11"	7-1/8"	12-3/4"	5-1/4"	-	1

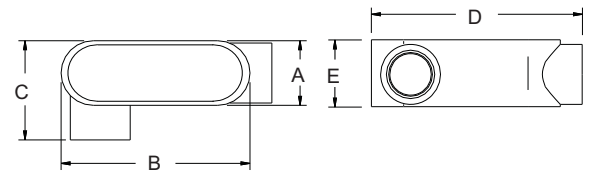


SAND CAST CLASS 30 GRAY IRON ALLOY
THREADED CONDUIT BODIES
"LR" SERIES
FORM 7

PRODUCT FEATURES

- ▶ Electroplated Zinc
- ▶ Flat back design for maximum internal wiring volume
- ▶ Interchangeable with other Form 7 conduit bodies
- ▶ Suitable for wet location when used with Gasket and Cover
- ▶ Use with easy Clip-on Covers
- ▶ NPT Thread Hubs

Cat. No.	Trade Size	DIMENSIONS - LR SERIES					Std. Pkg.	Master Ctn.
		A	B	C	D	E		
LR7-50	1/2"	1-7/16"	3-11/16"	1-7/16"	4-1/2"	1-3/8"	10	50
LR7-75	3/4"	1-5/8"	4-5/16"	2-1/2"	5-1/4"	1-5/8"	5	25
LR7-100	1"	1-13/16"	5-1/16"	2-3/4"	6-3/16"	1-13/16"	5	25
LR7-125	1-1/4"	2-3/16"	5-9/16"	3-1/8"	6-1/2"	2-3/16"	1	10
LR7-150	1-1/2"	2-7/16"	6-1/16"	3-3/8"	7-1/16"	2-7/16"	1	10
LR7-200	2"	3"	7-1/16"	4"	8-1/8"	3"	1	5
LR7-250	2-1/2"	4-1/4"	9-1/16"	5-7/8"	10-11/16"	4-1/4"	-	1
LR7-300	3"	4-1/4"	9-1/16"	5-7/8"	10-11/16"	4-1/4"	-	1
LR7-400	4"	5-5/16"	11"	7"	12-3/4"	5-5/16"	-	1



SAND CAST CLASS 30 GRAY IRON ALLOY
THREADED CONDUIT BODIES
"LL" SERIES
FORM 7

PRODUCT FEATURES

- ▶ Electroplated Zinc
- ▶ Flat back design for maximum internal wiring volume
- ▶ Interchangeable with other Form 7 conduit bodies
- ▶ Suitable for wet location when used with Gasket and Cover
- ▶ Use with easy Clip-on Covers
- ▶ NPT Thread Hubs

Cat. No.	Trade Size	DIMENSIONS - LL SERIES					Std. Pkg.	Master Ctn.
		A	B	C	D	E		
LL7-50	1/2"	1-7/16"	3-11/16"	1-7/16"	4-1/2"	1-3/8"	10	50
LL7-75	3/4"	1-5/8"	4-5/16"	2-1/2"	5-1/4"	1-5/8"	5	25
LL7-100	1"	1-13/16"	5-1/16"	2-3/4"	6-3/16"	1-13/16"	5	25
LL7-125	1-1/4"	2-3/16"	5-9/16"	3-1/8"	6-1/2"	2-3/16"	1	10
LL7-150	1-1/2"	2-7/16"	6-1/16"	3-3/8"	7-1/16"	2-7/16"	1	10
LL7-200	2"	3"	7-1/16"	4"	8-1/8"	3"	1	5
LL7-250	2-1/2"	4-1/4"	9-1/16"	5-7/8"	10-11/16"	4-1/4"	-	1
LL7-300	3"	4-1/4"	9-1/16"	5-7/8"	10-11/16"	4-1/4"	-	1
LL7-400	4"	5-5/16"	11"	7"	12-3/4"	5-5/16"	-	1

