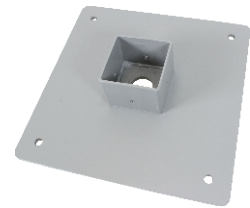


Rooftop Pedestal Posts | Pg. P17

PATENT PENDING



SHOWN INSTALLED



PP-30-B



PP-60-B



PP-30-S



PP-60-S

2021 NECA
Show Stopper

EC&M
Product of the Year
2021 Category Winner



PPEC-12 NEW

12" Extension Coupling

SERVE POWER TO 99% OF ALL COMMON ROOFTOP EQUIPMENT

Orbit's patent pending Pedestal Posts are NEMA 3R Listed raceways requires just one roof penetration, without the need for extra bracing. Available in 30" and 60" heights, the two-piece design reduces the amount of labor and material required to "stick-build" similar solutions in the field. Extension Coupling (PPEC-12) adds 12" of height to Stands (sold separately).

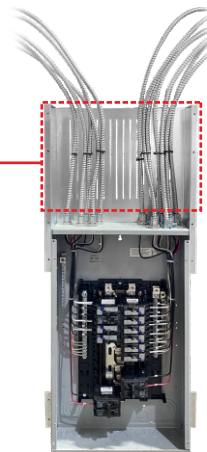
Load Center Bracket | Pg. P21



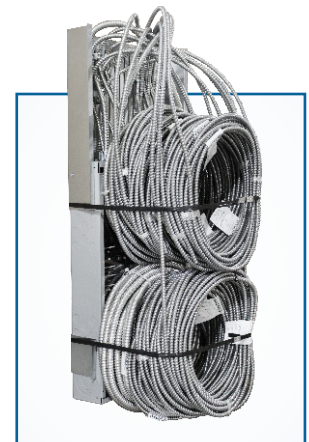
LCB-16 NEW



Vertical Cable Slots



Support MC/AC and Flex cable tool-free with MSC fastener



LCB-16 with Load Center and MC cable whips, shown prepared for shipment to jobsite

BEST WAY TO INSTALL PRE-WIRED LOAD CENTERS BETWEEN STUDS

Load Center Bracket for 16" stud bays (LCB-16), is a two-piece steel bracket designed for load center prefabrication. It features vertical slots to support multiple MC/AC or Flex cable runs. Outer flanges mount directly to the stud face. Vertical slots accept wide range of cable straps or ties. Bracket allows load center packages to travel safely with cable whips and fittings attached.