

NEW AWC-LWP6 SERIES

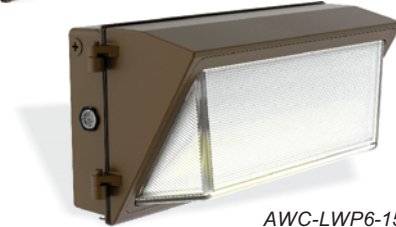
PRODUCT FEATURES

- ▶ UL Listed for Wet Location
- ▶ Die Cast Aluminum Housing
- ▶ UV Resistant Bronze Powder Coat Finish
- ▶ Prismatic Borosilicate molded Lens with weatherproof gasket
- ▶ TYPE IV Distribution
- ▶ Ambient Operating Temp: -40°C / -40°F to 40°C / 104°F
- ▶ 50,000 Life Hours
- ▶ Adjustable Wattage & CCT
- ▶ Built-In Photocell With ON/OFF Switch
- ▶ 0-10V/PWM/VR Dimmable
- ▶ 5 Year Limited Warranty

CERTIFICATES



AWC-LWP6-60W
AWC-LWP6-80W



AWC-LWP6-150W

Keep cover on to maintain waterproof integrity



CCT Adjustment Switch

ON/OFF

Photocell & Switch

Wattage Adjustment Switch



Catalog No.	Voltage	System Wattage	Adj. Color Temp.	Lumens	Wattage Equiv.
AWC-LWP6-60W-P	120~277V	30W/ 40W/ 60W	3000K/	3,818 lm/ 5,091 lm/ 7,636 lm	100W/ 150W/ 175W MH
AWC-LWP6-80W-P		50W/ 60W/ 80W	4000K/		
AWC-LWP6-150W-P		100W/ 120W/ 150W	5000K		

LWP3 SERIES

PRODUCT FEATURES

- ▶ UL Listed for Wet Location
- ▶ Die Cast Aluminum Housing
- ▶ UV Resistant Bronze Powder Coat Finish
- ▶ Polycarbonate Lens with Weatherproof Gasket
- ▶ TYPE III Distribution
- ▶ Ambient Operating Temp: -40°C / -40°F to 40°C / 104°F
- ▶ 50,000 Life Hours
- ▶ 0-10V/PWM Dimmable
- ▶ 5 Year Limited Warranty

CERTIFICATES



Catalog No.	Voltage	System Wattage	Color Temp.	Lumens	Wattage Equiv.
LWP3-50W-CW	120~277V	50W	5000K	6,648 lm	175W MH
LWP3-80W-CW		80W		10,029 lm	250W MH

ACCESSORIES Sold Separately



PC-1F
PC-1F-277



PC-1S



PC-1SH

Photocells

SCAN FOR MORE INFO

