



SUBMITTAL SHEETS

SPRING STEEL FASTENERS

SPECIFICATION & FEATURES

ANGLE BRACKETS

DESCRIPTION:

Orbit Industries' angle brackets can be installed to concrete or wood. The holes on different sides provide 90-degree installation for rods, hooks or chain.



CERTIFICATION:

UL file E328572, conforms to UL 2239.



FEATURES:

- Pre-Galvanized Steel
- Provide attachment for wire, threaded rods, S-hooks or chain from concrete or wood

CONFIGURATION DATA:

Part No.	Side Hole	Bottom Hole	Static Load	Std. Pkg.
AB4	1/4", Plain	1/4", Plain	160 LB	100
AB6	1/4", Plain	3/8", Plain	160 LB	100



SPECIFICATION & FEATURES

SPRING STEEL BEAM CLAMP 1/2" MAX FLANGE

DESCRIPTION:

Orbit Industries' spring steel beam clamp can be easily installed on beam flanges with the thickness up to 1/2". The holes on the back and the bottom of the clamp can support variety of attachments.



CERTIFICATION:

UL file E328572, conforms to UL 2239.



FEATURES:

- Spring Steel
- Supports threaded rods, electrical boxes and conduits
- Supports #10-24 and 1/4"-20 threaded bridle rings
- Easy installation for beam flanges

CONFIGURATION DATA:

Part No.	Flange Thickness	Hole Size	Rod Size	Static Load	Std. Pkg.
BCSS	1/2" MAX	7/16"	1/4" & 3/8"	100 LB	100

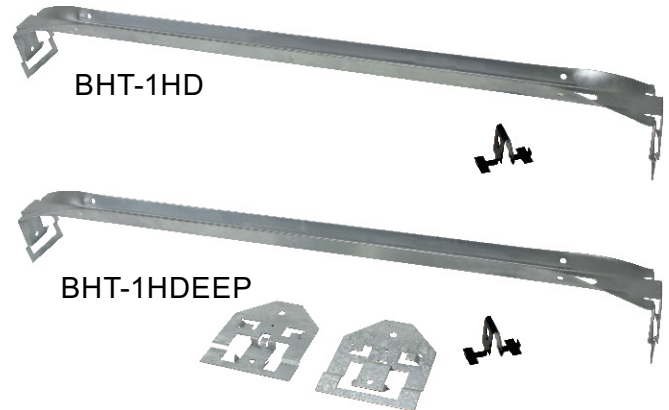


SPECIFICATION & FEATURES

HEAVY DUTY T-GRID BOX HANGERS

DESCRIPTION:

Orbit Industries' heavy duty T-grid box hangers can be easily and fast installed to T-grid with no tools needed. The hangers are used to support electrical boxes onto ceiling. Multiple slots on the hanger bar allow electrical boxes to be supported at different position of the ceiling. The mounting clip can hold boxes on the hanger or drop a wire to provide independent support. Optional brackets help accommodate boxes with different depth.



FEATURES:

- Pre-Galvanized Steel Hanger & Brackets
- Spring Steel Mounting Clip
- Adjustable height for different size electrical box depth
- No tools needed for installation
- Can be used for multiple box installations
- Mount flush with face of tile

CONFIGURATION DATA:

Part No.	Included Components	Length	Box Depth	Static Load	Std. Pkg.
BHT-1HD	Mounting Clip	24"	1-1/2", 2-1/8"	50LB	25
BHT-1HDEEP	Mounting Clip, 1-1/2" Extension Bracket	24"	1-1/2", 2-1/8" 3-5/8"	50LB	25



SPECIFICATION & FEATURES

CABLE/CONDUIT TO ROD/WIRE CLIPS

1/2" ~ 1-1/4" EMT

DESCRIPTION:

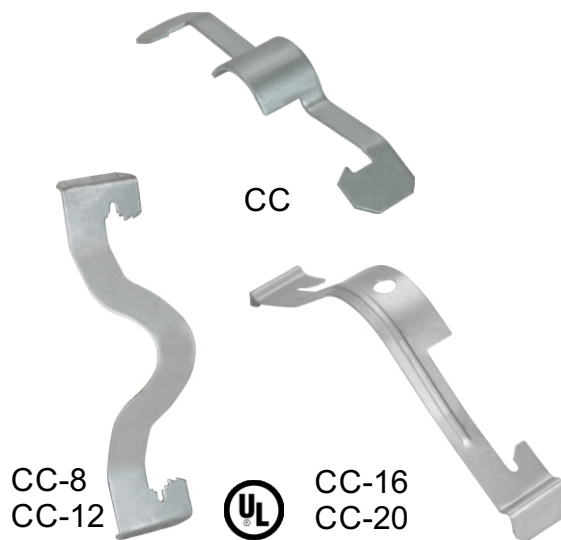
Orbit Industries' cable/conduit to rod/wire clips can be easily installed to flanges, rods or wire by hand to support conduits or cables. Spring steel tightening structure can keep conduits and cables stable on rods or wire and prevent wagging of electrical raceways.

CERTIFICATION:

UL file E328572, conforms to UL 2239.

FEATURES:

- Spring Steel
- Support conduits to rods, wire or flanges
- Can be used for flexible metallic tubing, armored cables, portable cables, control tubes and communication cables
- Available for EMT, rigid, aluminum and NM conduits
- No tools needed for installation



CONFIGURATION DATA:

Part No.	Load Capacity			Std. Pkg.	Master CTN
	Vertical Wire/Rod	Horizontal Flange	Vertical Flange		
CC	-	-	-	100	1000
CC-8	50 LB	100 LB	15 LB	100	1000
CC-12	50 LB	100 LB	15 LB	100	1000
CC-16	50 LB	100 LB	15 LB	100	1000
CC-20	50 LB	100 LB	22 LB	100	-

Cable Size	#12 Wire	#8, #9, #10 Wire
14-2, 14-3, 12-2	CC	CC
12-3	CC	CC-8

Conduit Size	#10, #12 Wire	#8, #9 Wire	3/16", 1/4" Rod	1/8" ~ 1/4" Flange	5/16" ~ 3/8" Flange	7/16" ~ 1/2" Flange
1/2" EMT	CC-8	CC-8	CC-8	CC-8	CC-12	CC-12
1/2" Rigid	CC-8	CC-12	CC-12	CC-12	CC-12	CC-16
3/4" EMT	CC-12	CC-12	CC-12	CC-12	CC-16	CC-16
3/4" Rigid	CC-12	CC-12	CC-16	CC-16	CC-20	CC-20
1" EMT	-	CC-16	CC-16	CC-16	CC-20	CC-20
1" Rigid	-	-	-	CC-20	CC-20	CC-20
1-1/4" EMT	-	CC-20	CC-20	CC-20	-	-

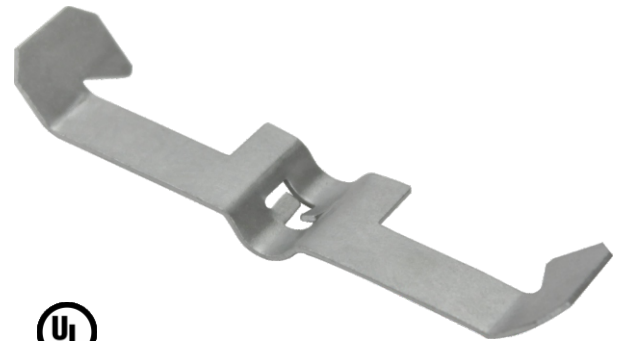


SPECIFICATION & FEATURES

WIRE BASKET TRAY CLIP

DESCRIPTION:

Orbit Industries' wire basket tray clip can be easily and fast installed onto strut with no tools needed. The clip is used to support wire basket tray from the top of the strut. The center area is used to locate the basket wire and the two ends can be easily squeezed and slide in place to connect the basket and the strut.



CERTIFICATION:

UL file E328572, conforms to UL 2239.

FEATURES:

- Spring Steel
- Attaches wire basket tray to strut
- No tools needed for installation

CONFIGURATION DATA:

Part No.	Wire Size	Std. Pkg.
CCT	3/16" ~ 5/16"	100



SPECIFICATION & FEATURES

CABLE/ CONDUIT TO WIRE CLIP

DESCRIPTION:

Orbit Industries' cable/conduit to wire clip can be easily and fast installed to drop wire. The clip is used to support MC/AC cables or conduits from drop wire. The upper part of the clip can be easily snap onto drop wire and the lower part can securely hold cables or conduits.

CERTIFICATION:

UL file E328572, conforms to UL 2239.



FEATURES:

- Spring steel
- Supports cable and conduit without bending drop wire
- No tools needed for installation

CONFIGURATION DATA:

Part No.	MC/AC Cable Size	Wire Size	Hole Size	Hole Type	Static Load	Std. Pkg.
CWC1	14-2 ~ 10-3	#8 ~ #12	1/4"	Plain	25 LB	100

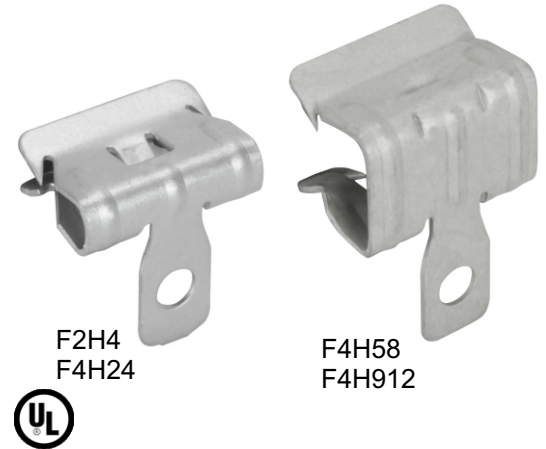


SPECIFICATION & FEATURES

DESCRIPTION:

Orbit Industries' side mount hammer on flange clips can be independently mounted to most beams and purlins to hang variety of attachments. Tap on the flange from 3/32" to 3/4" with a hammer.

HAMMER ON FLANGE CLIPS SIDE MOUNT 3/32" ~ 3/4" FLANGE



CERTIFICATION:

UL file E328572, conforms to UL 2239.

FEATURES:

- Spring Steel
- Provide attachment for wire, S-hooks, chain to flanges
- Fit most beams
- Only hammer needed for installation

CONFIGURATION DATA:

Part No.	Flange Thickness	Hole Size	Static Load	Std. Pkg.
F2H4	3/32" ~ 9/64"	1/4", Plain	160 LB	100
F4H24	1/8" ~ 1/4"	1/4", Plain	200 LB	100
F4H58	5/16" ~ 1/2"	1/4", Plain	200 LB	100
F4H912	9/16" ~ 3/4"	1/4", Plain	200 LB	100



SPECIFICATION & FEATURES

DESCRIPTION:

Orbit Industries' threaded bridle rings are used to support communication cables and other low voltage wires. The bridle rings for wood stud (WS) can be easily screwed on wood studs. Other bridle rings can be installed with other Orbit Industries' fasteners to support low voltage cables from beams, purlins, rods, metal studs, etc. The bridle rings are not recommended to support high performance cables.

CERTIFICATION:

UL file E328572, conforms to UL 2239.

FEATURES:

- Electrogalvanized Steel
- Support low voltage communication cables from beams, rods or purlins combined with other Orbit fasteners

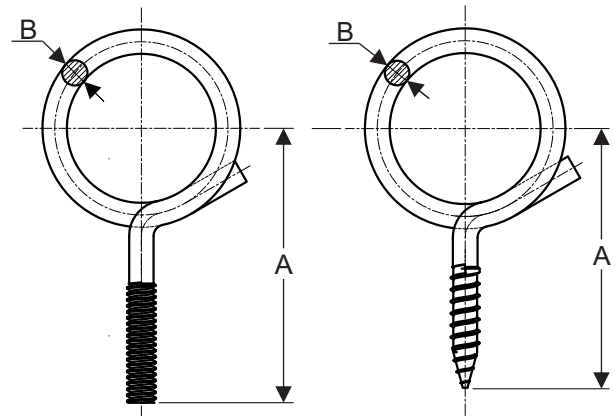
THREADED BRIDLE RINGS



F2BRT12
F2BRT20
F2BRT32
F4BRT20
F4BRT32
F4BRT64

F4BRT32WS

LINE DRAWINGS:



CONFIGURATION DATA:

Part No.	Diameter	Thread Size	Screw Type	A (in)	B (in)	Static Load	Std. Pkg.
F2BRT12	3/4"	#10-24	Metal	1.58	0.160	50 LB	100
*F2BRT20	1-1/4"	#10-24	Metal	1.83	0.160	50 LB	100
F2BRT32	2"	#10-24	Metal	2.20	0.160	50 LB	100
F4BRT20	1-1/4"	1/4"-20	Metal	2.30	0.213	50 LB	100
F4BRT32	2"	1/4"-20	Metal	2.68	0.213	50 LB	100
*F4BRT32WS	2"	1/4"-10	Wood	2.52	0.204	50 LB	100
F4BRT64	4"	1/4"-20	Metal	3.68	0.213	50 LB	50

* No UL Listed



SPECIFICATION & FEATURES

TWIST CLIP WITH WING NUT

DESCRIPTION:

Orbit Industries' twist clip with wing nut can be easily installed to T-grids with no tools needed. The clip is used to support electrical fixtures from T-grid. The wing nut is included.



CERTIFICATION:

UL file E328572, conforms to UL 2239.

FEATURES:

- Spring Steel
- Supports electrical fixtures from acoustical T-grid
- Wing nut included
- No tools needed for installation

CONFIGURATION DATA:

Part No.	T-Grid Size	Thread Size	Screw Length	Static Load	Std. Pkg.
F4G16	15/16"	1/4" - 20	9/16"	50 LB	100



SPECIFICATION & FEATURES

TWIST CLIP WITH PLAIN HOLE

DESCRIPTION:

Orbit Industries' twist clip with plain hole can be easily installed to T-grids with no tools needed. The clip is used to support wire, S-hooks or chain from T-grid.



CERTIFICATION:

UL file E328572, conforms to UL 2239.

FEATURES:

- Spring Steel
- Supports wire, S-hooks or chain from T-Grid
- No tools needed for installation

CONFIGURATION DATA:

Part No.	Hole Size	Flange Thickness	T-Grid Size	Static Load	Std. Pkg.
F4G16H	1/4", Plain	1/16" MAX	15/16"	40LB	100



SPECIFICATION & FEATURES

ROD TO FLANGE CLIPS 1/8" ~ 3/4" FLANGE

DESCRIPTION:

Orbit Industries' rod to flange clips can be easily tapped on the flange from 1/8" to 3/4" with a hammer. The threaded hole is used to suspend threaded rod and the rotatable joint can keep the rod in the vertical direction.



CERTIFICATION:

UL file E328572, conforms to UL 2239.



FEATURES:

- Spring Steel
- Provide attachment for threaded rod to flanges
- Can swivel to provide a vertical dropdown
- Only hammer needed for installation

CONFIGURATION DATA:

Part No.	Flange Thickness	Hole Size	Hole Type	Static Load	Std. Pkg.
F4TI24	1/8" ~ 1/4"	1/4"	Threaded	200 LB	100
F4TI58	5/16" ~ 1/2"	1/4"	Threaded	200 LB	100
F4TI912	9/16" ~ 3/4"	1/4"	Threaded	200 LB	100



SPECIFICATION & FEATURES THREADED INSTALL ROD HANGERS WITH ANGLE BRACKET

DESCRIPTION:

Orbit Industries' threaded install rod hangers with angle bracket can be installed horizontally to wood or concrete structures. The threaded hole is used to suspend threaded rod and the rotatable joint can keep the rod in the vertical direction.



CERTIFICATION:

UL file E328572, conforms to UL 2239.



FEATURES:

- Spring Steel Hanger
- Pre-Galvanized Steel Bracket
- Suspend threaded rod from horizontal structures such as laminated wood or concrete beams, joists, ceilings and walls

CONFIGURATION DATA:

Part No.	Top Hole	Bottom Hole	Static Load	Std. Pkg.
F4TIB	1/4", Plain	1/4", Threaded	160 LB	100
F6TIB	1/4", Plain	3/8", Threaded	160 LB	100



SPECIFICATION & FEATURES

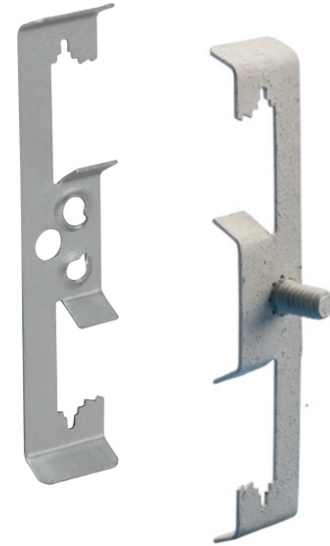
MULTI-FUNCTION CLIPS

DESCRIPTION:

Orbit Industries' multi-function clips can be easily installed on flanges, rods and wire to support boxes or conduits in multiple applications. The spring steel structure allows the clips to support attachments without additional hardware. The clips can be combined with other Orbit's fasteners to provide multiple installation for cables and conduits.

CERTIFICATION:

UL file E328572, conforms to UL 2239.



FEATURES:

- Spring Steel
- Provide attachment of conduits and boxes
- Support #10-24 and 1/4"-20 threaded bridle rings

CONFIGURATION DATA:

Part No.	Rod Size	Wire Size	Flange Thickness	Hole Size	Screw included	Thread Size	Load Capacity		Std. Pkg.
							Horizontal Flange	Vertical Rod or Wire	
F4Z34	1/4"	#12 ~ #8	1/8" ~ 3/8"	1/4"	No	-	25 LB	20 LB	100
F4Z4S	1/4"	#12 ~ #8	1/8" ~ 3/8"	-	Yes	1/4" - 20	25 LB	20 LB	100
F6Z34	3/8"	-	3/8" ~ 7/16"	1/4"	No	-	25 LB	20 LB	100
F6Z4S	3/8"	-	3/8" ~ 7/16"	-	Yes	1/4" - 20	25 LB	20 LB	100



SPECIFICATION & FEATURES

CABLE/CONDUIT TO ROD/WIRE CLIPS PUSH IN 1/2" ~ 1" EMT

DESCRIPTION:

Orbit Industries' push in cable/conduit to rod/wire clips can be easily installed to flanges or rods by hand to support conduits, cables and boxes. Conduits can be easily pushed into the conduit clip by hand. The flange clip can keep the conduit clip stable so that held conduits waggle less.



FEATURES:

- Spring Steel
- Provide attachment of conduits and boxes
- Snap close clip can pivot through 360°
- Easy Installation

CONFIGURATION DATA:

Part No.	EMT Size	Rigid Size	Rod Size	Wire Size	Flange Thickness	Std. Pkg.
F4Z348P	1/2"	-	1/4"	#12	1/8" ~ 3/8"	100
F6Z348P	1/2"	-	3/8"	-	3/8" ~ 7/16"	100
F4Z3412P	3/4"	1/2"	1/4"	#12	1/8" ~ 3/8"	100
F6Z3412P	3/4"	1/2"	3/8"	-	3/8" ~ 7/16"	100
F4Z3416P	1"	3/4"	1/4"	#12	1/8" ~ 3/8"	100
F6Z3416P	1"	3/4"	3/8"	-	3/8" ~ 7/16"	100



SPECIFICATION & FEATURES

ROD TO FLANGE ANGLE CLIPS 1/8" ~ 1/4", 9/16" ~ 3/4" FLANGE

DESCRIPTION:

Orbit Industries' rod to flange angle clips can be easily installed to beams with only a hammer. The clips are used to suspend plain rod to provide additional attaching methods. Plain rods can be easily snapped onto the lower part of the clips and the rotatable joint can keep the rods in the vertical direction.



CERTIFICATION:

UL file E328572, conforms to UL 2239.

FEATURES:

- Spring Steel
- Suspend plain rod from beam flanges
- Can swivel to provide a vertical dropdown
- Only hammer needed for installation

CONFIGURATION DATA:

Part No.	Flange Thickness	Rod Size	Rod Type	Static Load	Std. Pkg.
F6A24	1/8" ~ 1/4"	3/8"	Plain	200 LB	100
F6A912	9/16" ~ 3/4"	3/8"	Plain	200 LB	100

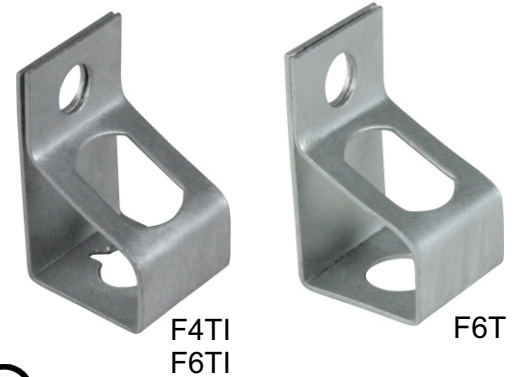


SPECIFICATION & FEATURES

THREADED INSTALL ROD HANGERS

DESCRIPTION:

Orbit Industries' threaded install rod hangers can be installed to concrete or block walls. The side hole is used for installation and the bottom hole supports wire or rod parallel to the wall. The hangers can be combined with other Orbit Industries' fasteners to make the installation on beams, purlins or stud possible.



CERTIFICATION:

UL file E328572, conforms to UL 2239.

FEATURES:

- Spring Steel
- Support wire or rod from block or concrete walls

CONFIGURATION DATA:

Part No.	Side Hole	Bottom Hole	Static Load	Std. Pkg.
F4TI	1/4", Plain	1/4", Threaded	160 LB	100
F6TI	1/4", Plain	3/8", Threaded	160 LB	100
F6T	1/4", Plain	3/8", Plain	160 LB	100



SPECIFICATION & FEATURES

CABLE/CONDUIT TO ROD/WIRE CLIPS SNAP CLOSE 1/2" ~ 1" EMT

DESCRIPTION:

Orbit Industries' Snap-Close Conduit Clips attach quickly to drop wire, threaded/unthreaded rods, and beam flanges, thanks to its spring steel design. This fastener series features a riveted cable/conduit clip that snaps closed without tools. The snap-close conduit clip can swivel 360° to accommodate incoming EMT or MC/AC cable runs at any angle, while maintaining vertical dropdown of the attached rod/cable.



CERTIFICATION:

UL file E328572, conforms to UL 2239.

FEATURES:

- Spring Steel
- Provides attachment of conduit, cable, and boxes to drop wire, threaded/unthreaded rods, and beam flanges
- Snap close conduit clip can pivot through 360°
- Easy, tool-free installation

CONFIGURATION DATA:

Part No.	EMT/Rigid Size	FMC Size	MC/AC Cable Size	Rod Size	Wire Size	Flange Thickness	Std. Pkg.
F4Z346M	-	3/8"	14-2 ~ 12-3	1/4"	#12	1/8" ~ 3/8"	100
F4Z34812M	1/2", 3/4"	-	-	1/4"	#12	1/8" ~ 3/8"	100
F6Z34812M	1/2", 3/4"	-	-	3/8"	-	3/8" ~ 7/16"	100
*F4Z3416M	1"	-	-	1/4"	#12	1/8" ~ 3/8"	100
*F6Z3416M	1"	-	-	3/8"	-	3/8" ~ 7/16"	100

*No UL Listed



SPECIFICATION & FEATURES

CONDUIT TO T-GRID CLIP SIDE MOUNT, PUSH IN 1/2" EMT

DESCRIPTION:

Orbit Industries' side mount, push in conduit to T-grid clip can be easily and fast installed on T-grid with no tools needed. The clip is used to position conduits from T-grids and conduits can be easily pushed into the conduit clip from the side of tee bars by hand.



FEATURES:

- Spring Steel
- Supports conduit horizontally or vertically above acoustical tee bar
- No tools needed for installation

CONFIGURATION DATA:

Part No.	EMT Size	Std. Pkg.
F8PATS	1/2"	100



SPECIFICATION & FEATURES

DESCRIPTION:

Orbit Industries' snap on, snap close conduit to stud clips can be easily installed to stud using the stud clip, which can provide additional support with a screw through the hole. The conduit clip can be easily snapped to hold conduits with no tools needed.

CONDUIT TO STUD CLIP SNAP ON, SNAP CLOSE 3/8" FMC ~ 1-1/4" EMT



CERTIFICATION:

UL file E328572, conforms to UL 2239.

FEATURES:

- Spring Steel
- Easily snap onto stud
- Snap-close conduit-support
- Fasten to stud with screw for additional support

CONFIGURATION DATA:

Part No.	EMT Size	Flexible Conduit Size	MC/AC Cable Size	Stud Clip Size	Std. Pkg.
F6MF	-	3/8"	14-2 ~ 12-3	1-3/8" ~ 1-1/2"	100
F812MF	1/2", 3/4"	-	-	1-3/8" ~ 1-1/2"	100
F16MF	1"	-	-	1-3/8" ~ 1-1/2"	100
F20MF	1-1/4"	-	-	1-3/8" ~ 1-1/2"	50



SPECIFICATION & FEATURES

CONDUIT CLAMPS PUSH IN 1/2" ~ 1" EMT

DESCRIPTION:

Orbit Industries' push in conduit clamps can be installed vertically or horizontally to fit conduits in different directions. Conduits can be easily and fast pushed into the clamp by hand. The clamp can be combined with other Orbit industries' fasteners to hang conduits to beams, purlins or rods.



CERTIFICATION:

UL file E328572, conforms to UL 2239.

FEATURES:

- Spring Steel
- Push in installation of conduit
- Eliminate need for offset bending conduit
- Can be used for vertical or horizontal installation

CONFIGURATION DATA:

Part No.	EMT Size	Rigid Size	Hole Size	Hole Type	Load Capacity		Std. Pkg.
					Vertical	Horizontal	
F8P	1/2"	-	9/32"	Plain	25 LB	15 LB	100
*F12P	3/4"	1/2"	9/32"	Plain	25 LB	15 LB	100
*F16P	1"	3/4"	9/32"	Plain	25 LB	15 LB	100

*No UL Listed



SPECIFICATION & FEATURES

CONDUIT TO FLANGE CLIPS BOTTOM MOUNT, PUSH IN 1/2" ~ 1" EMT, 1/8" ~ 3/4" FLANGE

DESCRIPTION:

Orbit Industries' bottom mount push in conduit to flange clips can be easily and fast installed to beam flanges from 1/8" to 3/4" with only a hammer. The clips support EMT and rigid conduits from the bottom of beams and conduits can be easily pushed in by hand. The rotatable joint allows the push in conduit clip to rotate 360° to fit conduits in different directions.



FEATURES:

- Spring Steel
- Only hammer needed for installation
- Available for EMT, rigid and aluminum conduit
- Can pivot through 360°

CONFIGURATION DATA:

Part No.	Flange Thickness	EMT Size	Rigid Size	Static Load	Std. Pkg.
F8P24	1/8" ~ 1/4"	1/2"	-	25 LB	100
F8P58	5/16" ~ 1/2"	1/2"	-	25 LB	100
F8P912	9/16" ~ 3/4"	1/2"	-	25 LB	50
F12P24	1/8" ~ 1/4"	3/4"	1/2"	25 LB	100
F12P58	5/16" ~ 1/2"	3/4"	1/2"	25 LB	100
F12P912	9/16" ~ 3/4"	3/4"	1/2"	25 LB	100
F16P24	1/8" ~ 1/4"	1"	3/4"	25 LB	100
F16P58	5/16" ~ 1/2"	1"	3/4"	25 LB	50
F16P912	9/16" ~ 3/4"	1"	3/4"	25 LB	50

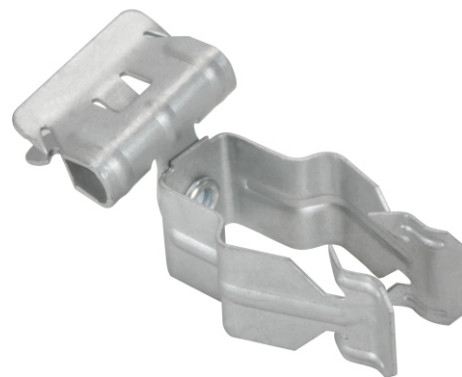


SPECIFICATION & FEATURES

CONDUIT TO FLANGE CLIPS SIDE MOUNT, PUSH IN 1/2" ~ 1" EMT, 1/8" ~ 3/4" FLANGE

DESCRIPTION:

Orbit Industries' side mount push in conduit to flange clips can be easily and fast installed to beam flanges from 1/8" to 3/4" with only a hammer. The clips support EMT and rigid conduits from the side of beams and conduits can be easily pushed in by hand. The rotatable joint allows the push in conduit clip to rotate 360° to fit conduits in different directions.



FEATURES:

- Spring Steel
- Only hammer needed for installation
- Available for EMT, rigid and aluminum conduit
- Can pivot through 360°

CONFIGURATION DATA:

Part No.	Flange Thickness	EMT Size	Rigid Size	Static Load	Std. Pkg.
F8P24SM	1/8" ~ 1/4"	1/2"	-	15 LB	100
F8P58SM	5/16" ~ 1/2"	1/2"	-	15 LB	100
F8P912SM	9/16" ~ 3/4"	1/2"	-	15 LB	100
F12P24SM	1/8" ~ 1/4"	3/4"	1/2"	15 LB	100
F12P58SM	5/16" ~ 1/2"	3/4"	1/2"	15 LB	100
F12P912SM	9/16" ~ 3/4"	3/4"	1/2"	15 LB	50
F16P24SM	1/8" ~ 1/4"	1"	3/4"	15 LB	100
F16P58SM	5/16" ~ 1/2"	1"	3/4"	15 LB	100
F16P912SM	9/16" ~ 3/4"	1"	3/4"	15 LB	50



SPECIFICATION & FEATURES

CONDUIT CLAMPS SNAP CLOSE 1/2" ~ 2" EMT

DESCRIPTION:

Orbit Industries' snap close conduit clamps can be installed vertically or horizontally to fit conduits in different directions. Conduits can be easily and fast snapped to the clamp. The clamps can be combined with other Orbit industries' fasteners to hang conduits to beams, purlins or rods.

CERTIFICATION:

UL file E328572, conforms to UL 2239.



FEATURES:

- Spring Steel
- Used for vertical or horizontal installations
- Snap-close
- When only one hole is provided use for EMT or Rigid; when two holes are provided use the first hole for Rigid, the second for EMT

CONFIGURATION DATA:

Part No.	FMC Size	MC/AC Size	EMT/Rigid Size	Hole Size	Hole Type	Load Capacity		Std. Pkg.
						Vertical	Horizontal	
F6M4I	3/8"	14-2 ~ 12-3	-	1/4"	Threaded	100 LB	25 LB	100
F812M4I	-	-	1/2", 3/4"	1/4"	Threaded	100 LB	25 LB	100
F16M4I	-	-	1"	1/4"	Threaded	100 LB	25 LB	100
F20M4I	-	-	1-1/4"	1/4"	Threaded	100 LB	25 LB	100
F24M4I	-	-	1-1/2"	1/4"	Threaded	100 LB	25 LB	100
F32M4I	-	-	2"	1/4"	Threaded	100 LB	25 LB	100
F6M	3/8"	14-2 ~ 12-3	-	9/32"	Plain	100 LB	25 LB	100
F812M	-	-	1/2", 3/4"	9/32"	Plain	100 LB	25 LB	100
F16M	-	-	1"	9/32"	Plain	100 LB	25 LB	100
F20M	-	-	1-1/4"	9/32"	Plain	100 LB	25 LB	100
F24M	-	-	1-1/2"	9/32"	Plain	100 LB	25 LB	100
F32M	-	-	2"	9/32"	Plain	100 LB	25 LB	100



SPECIFICATION & FEATURES

DESCRIPTION:

Orbit Industries' bottom mount snap close conduit to flange clips can be easily and fast installed to beam flanges from 1/8" to 3/4" with only a hammer. The clips support EMT and rigid conduits from the bottom of beams and the conduit clamp can be snapped easily. The rotatable joint allows the snap-close conduit clip to rotate 360° to fit conduits in different directions.

CONDUIT TO FLANGE CLIPS BOTTOM MOUNT, SNAP CLOSE 1/2" ~ 1" EMT, 1/8" ~ 3/4" FLANGE



CERTIFICATION:

UL file E328572, conforms to UL 2239.

FEATURES:

- Spring Steel
- Support conduits/pipes or cables from beam flanges
- Snap close clip can pivot through 360°
- Easy installation

CONFIGURATION DATA:

Part No.	Flange Thickness	EMT/Rigid Size	FMC Size	MC/AC Size	Static Load	Std. Pkg.
F6M24	1/8" ~ 1/4"	-	3/8"	14-2 ~12-3	75 LB	100
F6M58	5/16" ~ 1/2"	-	3/8"	14-2 ~12-3	75 LB	100
F6M912	9/16" ~ 3/4"	-	3/8"	14-2 ~12-3	75 LB	100
F812M24	1/8" ~ 1/4"	1/2", 3/4"	-	-	75 LB	100
F812M58	5/16" ~ 1/2"	1/2", 3/4"	-	-	75 LB	100
F812M912	9/16" ~ 3/4"	1/2", 3/4"	-	-	75 LB	50
F16M24	1/8" ~ 1/4"	1"	-	-	75 LB	100
F16M912	9/16" ~ 3/4"	1"	-	-	75 LB	50



SPECIFICATION & FEATURES

DESCRIPTION:

Orbit Industries' side mount snap close conduit to flange clips can be easily and fast installed to beam flanges from 1/8" to 3/4" with only a hammer. The clips support EMT and rigid conduits from the side of beams and the conduit clamp can be snapped easily. The rotatable joint allows the snap-close conduit clip to rotate 360° to fit conduits in different directions.

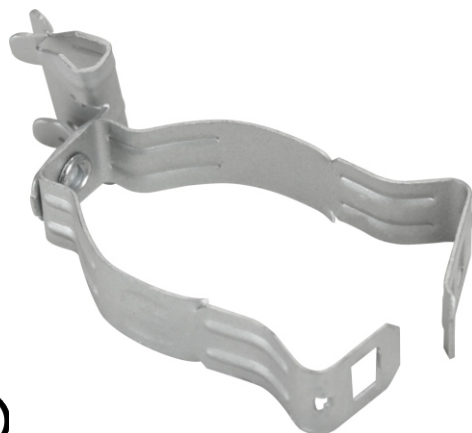
CERTIFICATION:

UL file E328572, conforms to UL 2239.

FEATURES:

- Spring Steel
- Available for EMT, rigid and aluminum conduit
- Snap close clip can pivot through 360°
- Easy installation

CONDUIT TO FLANGE CLIPS SIDE MOUNT, SNAP CLOSE 1/2" ~ 2" EMT, 1/8" ~ 3/4" FLANGE



CONFIGURATION DATA:

Part No.	Flange Thickness	EMT/Rigid Size	FMC Size	MC/AC Size	Static Load	Std. Pkg.
F6M24SM	1/8" ~ 1/4"	-	3/8"	14-2 ~12-3	25 LB	100
F6M58SM	5/16" ~ 1/2"	-	3/8"	14-2 ~12-3	25 LB	100
F6M912SM	9/16" ~ 3/4"	-	3/8"	14-2 ~12-3	25 LB	100
F812M24SM	1/8" ~ 1/4"	1/2", 3/4"	-	-	25 LB	100
F812M58SM	5/16" ~ 1/2"	1/2", 3/4"	-	-	25 LB	100
F812M912SM	9/16" ~ 3/4"	1/2", 3/4"	-	-	25 LB	100
F16M24SM	1/8" ~ 1/4"	1"	-	-	25 LB	100
F16M58SM	5/16" ~ 1/2"	1"	-	-	25 LB	100
F16M912SM	9/16" ~ 3/4"	1"	-	-	25 LB	50
F20M24SM	1/8" ~ 1/4"	1-1/4"	-	-	25 LB	100
F20M58SM	5/16" ~ 1/2"	1-1/4"	-	-	25 LB	100
F20M912SM	9/16" ~ 3/4"	1-1/4"	-	-	25 LB	100
F24M24SM	1/8" ~ 1/4"	1-1/2"	-	-	25 LB	50
F24M58SM	5/16" ~ 1/2"	1-1/2"	-	-	25 LB	50
F24M912SM	9/16" ~ 3/4"	1-1/2"	-	-	25 LB	50
F32M24SM	1/8" ~ 1/4"	2"	-	-	25 LB	50
F32M58SM	5/16" ~ 1/2"	2"	-	-	25 LB	50
F32M912SM	9/16" ~ 3/4"	2"	-	-	25 LB	50



SPECIFICATION & FEATURES

ANGLE PURLIN CLIP SIDE MOUNT 3/32" MAX FLANGE

DESCRIPTION:

Orbit Industries' side mount angle purlin clip is designed for angle purlin with flange thickness up to 3/32". The clip is used to support wire, chain and S-hooks and can be easily mounted from the side of Z purlin with only a hammer. The Clip can also be combined with other structures to provide variety of attachments.



CERTIFICATION:

UL file E328572, conforms to UL 2239.

FEATURES:

- Spring Steel
- Compensates angle of purlin
- Only hammer needed for installation

CONFIGURATION DATA:

Part No.	Hole Size	Hole Type	Flange Thickness	Static Load	Std. Pkg.
F122	1/4", Plain	Plain	3/32" MAX	100LB	100



SPECIFICATION & FEATURES

CONDUIT TO T-GRID CLIPS TOP MOUNT, SNAP CLOSE 1/2" ~ 3/4" EMT

DESCRIPTION:

Orbit Industries' top mount, snap close conduit to T-grid clips can be easily and fast installed on T-grid with no tools needed. The clips are used to position conduits or MC/AC cables above T-grids and the conduit clip can be snapped easily to hold conduits or cables. The rotatable joint allows the snap-close conduit clip to rotate 360° to fit conduits in different directions.

CERTIFICATION:

UL file E328572, conforms to UL 2239.



FEATURES:

- Spring Steel
- Support conduit or MC/AC cable horizontally above acoustical tee bar
- Easy installation

CONFIGURATION DATA:

Part No.	EMT Size	FMC Size	MC/AC Cable Size	Std. Pkg.
F6MATA	-	3/8"	14-2 ~ 12-3	100
F812MATA	1/2", 3/4"	-	-	100

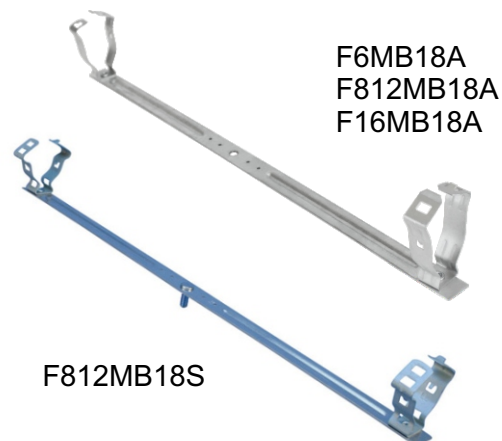


SPECIFICATION & FEATURES

BOX/CONDUIT HANGERS 1/2" ~ 1" EMT

DESCRIPTION:

Orbit Industries' box/conduit hangers can be easily installed to drop wire, drop rod or other structures. The hangers are used to support boxes in the center and conduits on both sides of boxes with less drop wire or rod needed. The snap close conduit clamp at each end can be easily and fast snapped to hold conduits. The center hole accepts other Orbit Industries' fasteners to provide attachment to different structures.



CERTIFICATION:

UL file E328572, conforms to UL 2239.

FEATURES:

- Pre-Galvanized Steel Hanger
- Spring Steel Clamps
- Provide support for both sides of horizontal electrical box or conduit from threaded rod
- Eliminate need for offset conduit bending

CONFIGURATION DATA:

Part No.	EMT Size	FMC Size	MC/AC Cable Size	Hole Size	Hole Type	Screw Included	Thread Size	Screw Length	Std. Pkg.
F6MB18A	-	3/8"	14-2 ~ 12-3	1/4"	Plain	No	-	-	25
F812MB18A	1/2", 3/4"	-	-	1/4"	Plain	No	-	-	25
F812MB18S	1/2", 3/4"	-	-	-	-	Yes	1/4" - 20	9/16"	25
F16MB18A	1"	-	-	1/4"	Plain	No	-	-	25



SPECIFICATION & FEATURES

ROD TO ANGLE PURLIN CLIPS SIDE MOUNT 3/32" MAX FLANGE

DESCRIPTION:

Orbit Industries' side mount rod to angle purlin clips are designed for angle purlin with flange thickness up to 3/32". The clips are used to support threaded rod and can be easily mounted from the side of purlin with only a hammer. The rotatable joint can keep the rod in the vertical direction.

CERTIFICATION:

UL file E328572, conforms to UL 2239.



FEATURES:

- Spring Steel
- Provide attachment for threaded rod to purlins
- Only hammer needed for installation

CONFIGURATION DATA:

Part No.	Hole Size	Hole Type	Flange Thickness	Static Load	Std. Pkg.
F1226TI	3/8"	Threaded	3/32" MAX	100LB	100



SPECIFICATION & FEATURES

CONDUIT TO ANGLE PURLIN CLIP SNAP CLOSE

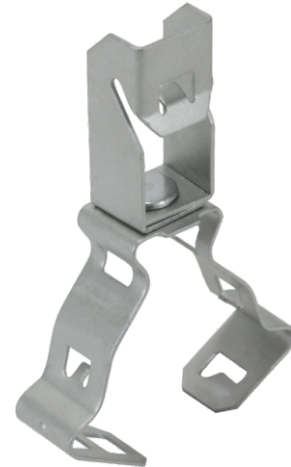
1/2", 3/4" EMT, 3/32" MAX FLANGE

DESCRIPTION:

Orbit Industries' conduit to angle purlin clip is designed for angle purlin with flange thickness up to 3/32" and can be easily and fast installed with only a hammer. The clip is used to support EMT and rigid conduits from angle purlins and the conduit clamp can be snapped easily. The rotatable joint allows the snap-close conduit clip to rotate 360° to fit conduits in different directions.

CERTIFICATION:

UL file E328572, conforms to UL 2239.



FEATURES:

- Spring Steel
- Provides parallel attachment for conduit/pipe or cable to purlins
- Snap close clip can pivot through 360°
- Easy installation

CONFIGURATION DATA:

Part No.	EMT Size	Flange Thickness	Static Load	Std. Pkg.
F123812M	1/2", 3/4"	3/32" MAX	100LB	100



SPECIFICATION & FEATURES

CONDUIT TO STUD ATTACHMENT SNAP CLOSE 1/2" ~ 3/4" EMT

DESCRIPTION:

Orbit Industries' conduit to stud attachment can be easily installed to metal or wood stud with screws. The attachment is used to position EMT conduits from studs and the conduit clamp can be snapped easily. The rotatable joint allows the snap-close conduit clamp to rotate 360° to fit conduits in different directions.



CERTIFICATION:

UL file E328572, conforms to UL 2239.

FEATURES:

- Spring Steel
- Positions conduit on metal or wood stud of any size
- Held to stud with screw
- Snap-close conduit-support

CONFIGURATION DATA:

Part No.	EMT Size	Std. Pkg.
F350812M	1/2", 3/4"	100



SPECIFICATION & FEATURES

ANGLE PURLIN CLIP 1/16" ~ 1/4" FLANGE

DESCRIPTION:

Orbit Industries' angle purlin clip is designed for angle purlin with flange from 1/16" to 1/4". The clip is used to support wire, chain and S-hooks, and can be installed easily with only a hammer.



CERTIFICATION:

UL file E328572, conforms to UL 2239.



FEATURES:

- Spring Steel
- Compensates angle of purlin
- Provides attachment for wire, S-hooks, chain to flanges
- Only hammer needed for installation

CONFIGURATION DATA:

Part No.	Flange Thickness	Static Load	Std. Pkg.
FAF14	1/16" ~ 1/4"	100 LB	100



SPECIFICATION & FEATURES

ROD TO ANGLE PURLIN CLIPS 1/16" ~ 1/4" FLANGE

DESCRIPTION:

Orbit Industries' rod to angle purlin clips can be easily hammered on Z purlins with the flange thickness from 1/16" to 1/4". The hole on the bottom of the clips is used to suspend threaded rods and the rotatable joint can keep the rods in the vertical direction.



CERTIFICATION:

UL file E328572, conforms to UL 2239.



FEATURES:

- Spring Steel
- Compensate angle of purlin
- Provide attachment for threaded rods to purlins
- Only hammer needed for installation

CONFIGURATION DATA:

Part No.	Flange Thickness	Hole Size	Hole Type	Static Load	Std. Pkg.
FAF144TI	1/16" ~ 1/4"	1/4"	Threaded	100 LB	100
FAF146TI	1/16" ~ 1/4"	3/8"	Threaded	100 LB	100
FAF146T	1/16" ~ 1/4"	3/8"	Plain	100 LB	100



SPECIFICATION & FEATURES

T- GRID CLIP, SIDE MOUNT

DESCRIPTION:

Orbit Industries' T-grid clip can be easily and fast installed onto T-grid with no tools needed. The clip is used to position vertical boxes or bridle rings from the side of T-grids and takes no load rating. The clip can be combined with other Orbit Industries' fasteners to locate conduits or cables from T-grids.



FEATURES:

- Spring Steel
- Supports box vertically above acoustical tee bar
- No tools needed for installation

CONFIGURATION DATA:

Part No.	Hole Size	Hole Type	Std. Pkg.
FATS4I	1/4"	Threaded	100



SPECIFICATION & FEATURES

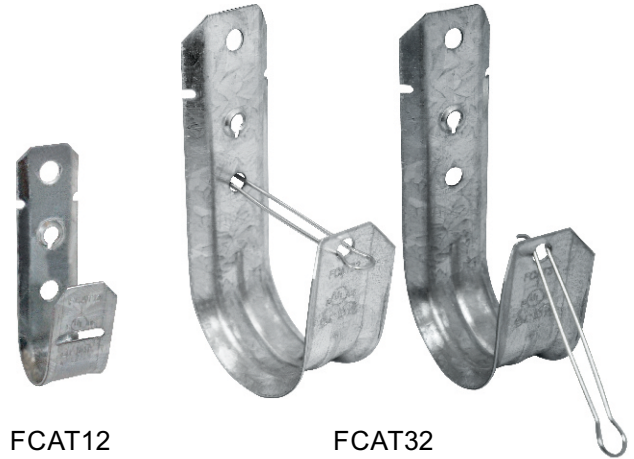
J-HOOKS 3/4" ~ 4" DIAMETER

DESCRIPTION:

Orbit Industries' J-hooks can be easily installed to studs or walls. They are used to support sensitive cables and can protect cables from pulling. The J-hooks provide an economical way to hang cables, and can be combined with other Orbit industries' fasteners to provide attachment for cables to variety of structures, such as beams, purlins or rods.

CERTIFICATION:

UL file E328572, conforms to UL 2239.



FCAT12

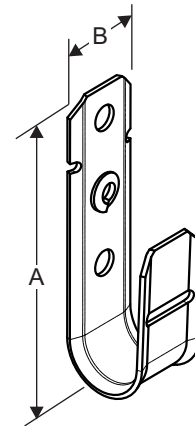
FCAT32
FCAT64



FEATURES:

- Pre-galvanized Steel
- Cost effective alternative to expensive cable tray
- Galvanized finish on J-Hooks provides smoother cable pull and greater corrosion resistance
- Support fiber optic, innerduct and low voltage cable
- Built-in cable retaining design on FCAT12
- Cable retainer included for FCAT32 and FCAT64 since March 2024

LINE DRAWINGS:



CONFIGURATION DATA:

Part No.	Diameter	A (in)	B (in)	Std. Pkg.
FCAT12	3/4"	3.10	0.87	50
FCAT21	1-5/16"	4.22	1.34	50
FCAT32	2"	4.65	1.38	50
FCAT64	4"	7.01	1.93	25



SPECIFICATION & FEATURES

J-HOOKS WITH ROD/WIRE CLIP 1/8" ~ 7/16" FLANGE

DESCRIPTION:

Orbit Industries' J-hooks with rod/wire clip can be easily and fast installed to flanges, threaded rods or wire with no tools needed. They are used to support sensitive cables and can protect cables from pulling. The hooks provide an economical way to hang cables.

CERTIFICATION:

UL file E328572, conforms to UL 2239.



FEATURES:

- Pre-galvanized Steel J-Hooks with Spring Steel clip
- Threaded rod attachment with attached J-Hook
- Support low voltage cables

CONFIGURATION DATA:

Part No.	Diameter	Flange Thickness	Rod Size	Wire Size	Std. Pkg.
FCAT124Z34	3/4"	1/8" ~ 3/8"	1/4"	#12 ~ #8	40
FCAT126Z34	3/4"	3/8" ~ 7/16"	3/8"	-	60



SPECIFICATION & FEATURES

CABLE/CONDUIT TO STUD ATTACHMENTS 1/2" ~ 1" EMT

DESCRIPTION:

Orbit Industries' Cable/Conduit to Stud Attachments are a reliable solution for keeping EMT conduit or MC/AC cable in-line with junction box knockouts. The FCS812 Series includes several pre-punched holes and slots, providing flexibility when screwing to wood or metal studs. FCS812 Series' surface area is thin and flat, allowing for overlap of other fasteners or stud products sharing the same screw(s).

The FCS812 Series helps comply with the following electrical codes:

- NEC® Article 358.30(A): requires conduit support within 36" of an electrical box
- CEC Rule 12-1404: requires conduit support within 1m of an electrical box
- CEC Rule 12-618: requires support of armored cable within 300 mm (12") of an electrical box



FEATURES:

- Spring steel
- Supports EMT conduit or MC/AC cable
- Ensures conduit is in-line with junction box knockout
- Allows for overlap of other fasteners sharing the same screw(s)
- For wood or metal studs
- Eliminates offset bending of conduit

CONFIGURATION DATA:

Part No.	EMT Size	Box Depth	Std. Pkg.
FCS812	1/2", 3/4"	1-1/2"	100
FCS812D	1/2", 3/4"	2-1/8"	100
FCS16	1"	2-1/8"	100

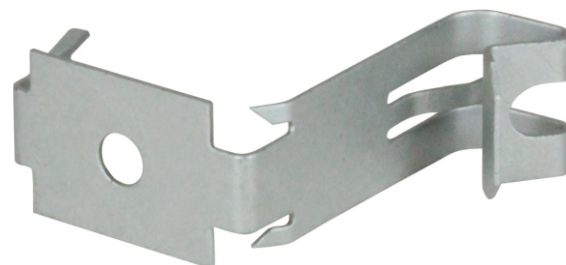


SPECIFICATION & FEATURES

CABLE TO STUD CLIP

DESCRIPTION:

Orbit Industries' cable to stud clip can be easily installed to stud through the stud clip with no tools needed. The cable clip is used to hang MC/AC and NM cables as required by NEC® 300.4(d), CEC 12-618 and CEC 12-510.



CERTIFICATION:

UL file E328572, conforms to UL 2239.



FEATURES:

- Spring Steel
- Provides secure support of NMC or MC/AC to metal or wood stud easily
- Delivers compliance with NEC® 300.4(d), CEC 12-618 and CEC 12-510
- No tools needed for installation
- Fasten to stud with screw for additional support

CONFIGURATION DATA:

Part No.	Cable Clip Outer Diameter	MC/AC Cable Size	NM Cable Size	Stud Clip Size	Std. Pkg.
FFXC20	7/16" ~ 9/16"	14-2 ~ 12-3	14-2 ~ 12-3	1-3/8" ~ 1-1/2"	100



SPECIFICATION & FEATURES

HAMMER ON FLANGE CLIPS BOTTOM MOUNT 1/8" ~ 3/4" FLANGE

DESCRIPTION:

Orbit Industries' bottom mount hammer on flange clips can be independently mounted to any surface. The clips support variety of attachments with or without installing rod or strap. Tap on flanges from 1/8" to 1/4" with only a hammer.



CERTIFICATION:

UL file E328572, conforms to UL 2239.



FEATURES:

- Spring Steel
- Can be used to support boxes, fixtures or other attachments from beam flanges
- Only hammer needed for installation

CONFIGURATION DATA:

Part No.	Flange Thickness	Rod Size	Load Capacity			Std. Pkg.
			Vertical Rod	Horizontal Rod	Vertical Strap	
FM24	1/8" ~ 1/4"	1/4"	100 LB	25 LB	75 LB	100
FM58	5/16" ~ 1/2"	1/4"	100 LB	25 LB	75 LB	100
FM912	9/16" ~ 3/4"	1/4"	100 LB	25 LB	75 LB	100



SPECIFICATION & FEATURES

HAMMER ON FLANGE CLIPS BOTTOM MOUNT WITH STUD 1/8" ~ 3/4" FLANGE

DESCRIPTION:

Orbit Industries' bottom mount with stud hammer on flange clips can be independently mounted to any surface. Tap on flanges from 1/8" to 3/4" with the hammer. Captive threaded stud helps minimize other hardware. Further attachment is possible with rods or straps.



CERTIFICATION:

UL file E328572, conforms to UL 2239.

FEATURES:

- Spring Steel
- Can be used to support boxes, fixtures or other attachments from beam flanges
- Only hammer needed for installation

CONFIGURATION DATA:

Part No.	Flange Thickness	Rod Size	Thread Size	Screw Length	Load Capacity			Std. Pkg.
					Vertical Rod	Horizontal Rod	Vertical Strap	
FM24S	1/8" ~ 1/4"	1/4"	1/4" - 20	3/8"	100 LB	25 LB	75 LB	100
FM58S	5/16" ~ 1/2"	1/4"	1/4" - 20	3/8"	100 LB	25 LB	75 LB	100
FM912S	9/16" ~ 3/4"	1/4"	1/4" - 20	3/8"	100 LB	25 LB	75 LB	100

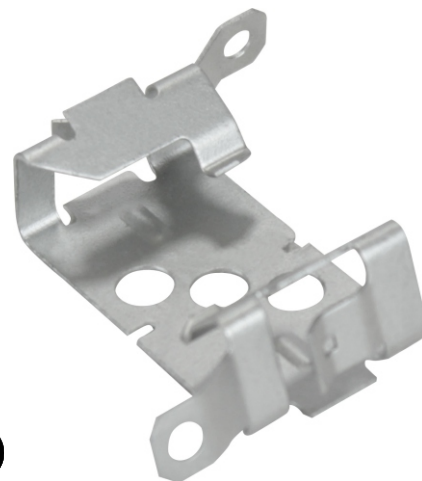


SPECIFICATION & FEATURES

MC/AC CABLE TO STUD CLIP 14-2 ~ 10-3 MC/AC

DESCRIPTION:

Orbit Industries' MC/AC cable to stud clip can be easily installed to flanges with thickness up to 1/8" by using the legs, or be screwed on concrete, block or wood and metal studs by using the mounting holes. The clip is used to position MC/ AC cables as required by NEC® Article 300.4(d) and CEC Rule 12-618. The clip can be snapped to make two clips for single cable runs.



CERTIFICATION:

UL file E328572, conforms to UL 2239.

FEATURES:

- Spring Steel
- No tools needed for installation
- Holes in clip allow it to be screwed to wood stud, concrete or block
- Stabilizer leg provides "wobble-free" support
- Compliant with NEC® Article 300.4(d), allowing cable to be positioned a minimum of 1-1/4" from face of stud
- Compliant with CEC Rule 12-618 for support of MC/AC cable
- Can be snapped in half making one clip to two

CONFIGURATION DATA:

Part No.	Flange Thickness	Stud Clip Size	Std. Pkg.
FMAC2	1/8" MAX	14-2 ~ 12-3	100



SPECIFICATION & FEATURES

DESCRIPTION:

Orbit Industries' right angle strap hangers for flange are designed for beams with flange from 5/16" to 1/2", and can be easily and fast installed to beams with only a hammer. The hangers are used to support pipes, ducts or other products with straps. The hangers suspend straps parallel to the beam and supported pipes and ducts are at right angle to the beam. Installers need to measure the length of strap to keep the supported pipe and duct at an appropriate position.

CERTIFICATION:

UL file E328572, conforms to UL 2239.

STRAP HANGERS FOR FLANGE RIGHT ANGLE 5/16" ~ 1/2" FLANGE



FEATURES:

- Spring Steel Clip
- Pre-galvanized Steel Hanger
- Suspend straps parallel to beams
- Only hammer needed for installation

CONFIGURATION DATA:

Part No.	Flange Thickness	Strap Width	Static Load	Std. Pkg.
FMSR58	5/16" ~ 1/2"	1-1/4" MAX	200 LB	50



SPECIFICATION & FEATURES

STRAP HANGER FOR ANGLE PURLIN RIGHT ANGLE 3/32" MAX FLANGE

DESCRIPTION:

Orbit Industries' right angle strap hanger for angle purlin is designed for angle purlin with flange thickness up to 3/32", and can be easily and fast installed to angle purlins with only a hammer. The hanger is used to support pipes, ducts or other products with straps. The hanger suspends straps at right angle to the purlin, and supported pipes and ducts are parallel to the purlin. Installers need to measure the length of strap to keep the supported pipe and duct at an appropriate position.

CERTIFICATION:

UL file E328572, conforms to UL 2239.



FEATURES:

- Spring Steel Clip
- Pre-galvanized Steel Hanger
- Compensates angle of purlin
- Suspends straps at right angle to purlins
- Only hammer needed for installation

CONFIGURATION DATA:

Part No.	Flange Thickness	Strap Width	Static Load	Std. Pkg.
FMSR122	3/32" MAX	1-1/4" MAX	100 LB	50



SPECIFICATION & FEATURES

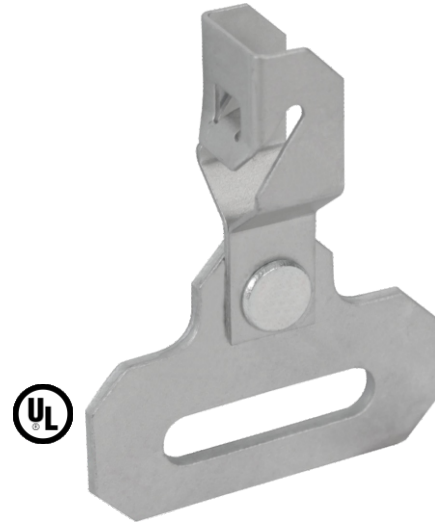
STRAP HANGER FOR ANGLE PURLIN PARALLEL 3/32" MAX FLANGE

DESCRIPTION:

Orbit Industries' parallel strap hanger for angle purlin is designed for angle purlin with flange thickness up to 3/32", and can be easily and fast installed to angle purlins with only a hammer. The hanger is used to support pipes, ducts or other products with straps. The hanger suspends straps parallel to the purlin and supported pipes and ducts are at right angle to the purlin. Installers need to measure the length of strap to keep the supported pipe and duct at an appropriate position.

CERTIFICATION:

UL file E328572, conforms to UL 2239.



FEATURES:

- Spring Steel Clip
- Pre-galvanized Steel Hanger
- Compensates angle of purlin
- Suspends straps parallel to purlins
- Only hammer needed for installation

CONFIGURATION DATA:

Part No.	Flange Thickness	Strap Width	Static Load	Std. Pkg.
FMSS122	3/32" MAX	1-1/4" MAX	100 LB	50



SPECIFICATION & FEATURES

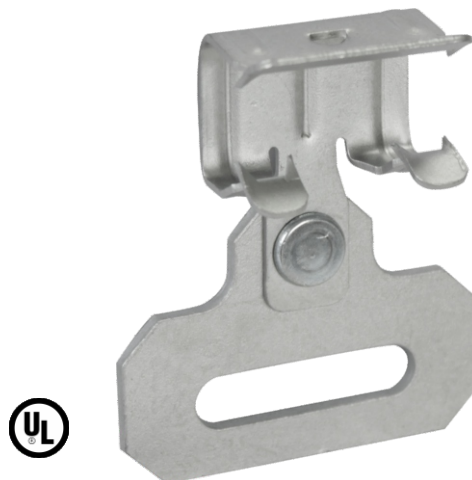
DESCRIPTION:

Orbit Industries' parallel strap hangers for flange are designed for beams with flange from 1/8" to 3/4", and can be easily and fast installed to beams with only a hammer. The hangers are used to support pipes, ducts or other products with straps. The hangers suspend straps at right angle to the beam and supported pipes and ducts are parallel to the beam. Installers need to measure the length of strap to keep the supported pipe and duct at an appropriate position.

CERTIFICATION:

UL file E328572, conforms to UL 2239.

STRAP HANGERS FOR FLANGE PARALLEL 1/8" ~ 3/4" FLANGE



FEATURES:

- Spring Steel Clip
- Pre-galvanized Steel Hanger
- Suspend straps at right angles to beams
- Only hammer needed for installation

CONFIGURATION DATA:

Part No.	Flange Thickness	Strap Width	Static Load	Std. Pkg.
FMSS24	1/8" ~ 1/4"	1-1/4" MAX	200 LB	50
FMSS58	5/16" ~ 1/2"	1-1/4" MAX	200 LB	50
FMSS912	9/16" ~ 3/4"	1-1/4" MAX	200 LB	50



SPECIFICATION & FEATURES

NM CABLE TO FLANGE CLIP 5/16" ~ 1/2" FLANGE

DESCRIPTION:

Orbit Industries' NM cable to flange clip can be easily and fast installed to flange from 5/16" to 1/2". The clip is used to support nonmetallic cables from beams. The flange clip can be easily hammered onto beams and the cable holder can securely support cables.



CERTIFICATION:

UL file E328572, conforms to UL 2239.

FEATURES:

- Spring steel
- Attaches NM cable to beam flange
- Supports NM cable with ground wire
- Only hammer needed for installation

CONFIGURATION DATA:

Part No.	MC/AC Cable Size	Outer Diameter	Flange Thickness	Std. Pkg.
FRMX58	14-2, 12-2	0.28" ~ 0.32"	5/16" ~ 1/2"	100



SPECIFICATION & FEATURES

CABLE SNAP CLIPS 1/16" ~ 9/32" FLANGE

DESCRIPTION:

Orbit Industries' cable snap clips can be easily and fast installed to flanges to hold cables without additional hardware. The clips are used for cable positioning only and take no load rating.

CERTIFICATION:

UL file E328572, conforms to UL 2239.



FEATURES:

- Spring Steel
- Clips snap on flange and cable snaps into clips

CONFIGURATION DATA:

Part No.	Flange Thickness	Outer Diameter	Std. Pkg.
FSC2A	1/16" ~ 3/16"	0.236" ~ 0.276"	100
FSC2D	1/16" ~ 3/16"	0.468" ~ 0.562"	100
FSC2E	1/16" ~ 3/16"	0.591" ~ 0.709"	100
FSC2F	1/16" ~ 3/16"	0.748" ~ 0.945"	100
FSC4B	3/16" ~ 9/32"	0.315" ~ 0.357"	100
FSC4D	3/16" ~ 9/32"	0.468" ~ 0.562"	100

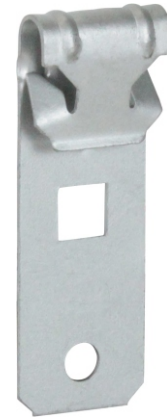


SPECIFICATION & FEATURES

VERTICAL PURLIN CLIP 1/16" ~ 1/4" FLANGE

DESCRIPTION:

Orbit Industries' vertical purlin clip is designed for vertical purlin with flange from 1/16" to 1/4". The clip is used to support wire, chain and S-hooks, and can be installed easily with only a hammer.



CERTIFICATION:

UL file E328572, conforms to UL 2239.



FEATURES:

- Spring Steel
- Fits vertical purlins and bar joists
- Provides attachment for wire, S-hooks, chain to flanges
- Only hammer needed for installation

CONFIGURATION DATA:

Part No.	Flange Thickness	Static Load	Std. Pkg.
FVF14	1/16" ~ 1/4"	160LB	100

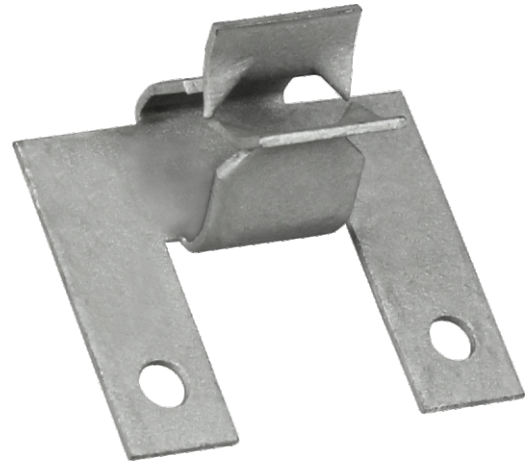


SPECIFICATION & FEATURES

PIPE SLEEVE POSITIONER

DESCRIPTION:

Orbit Industries' pipe sleeve positioner can be easily installed with only a hammer. The positioner is only for positioning pipe sleeves during concrete pours and takes no load rating.



FEATURES:

- Spring Steel
- Positions pipe sleeves and keeps them stable during concrete pours
- Only hammer needed for installation
- Can be used for schedule 40 pipes with sleeve diameter of 2" through 6"
- Can be used for wall thickness under 5/16" with all sleeve diameters

CONFIGURATION DATA:

Part No.	Std. Pkg.
HOSP	100

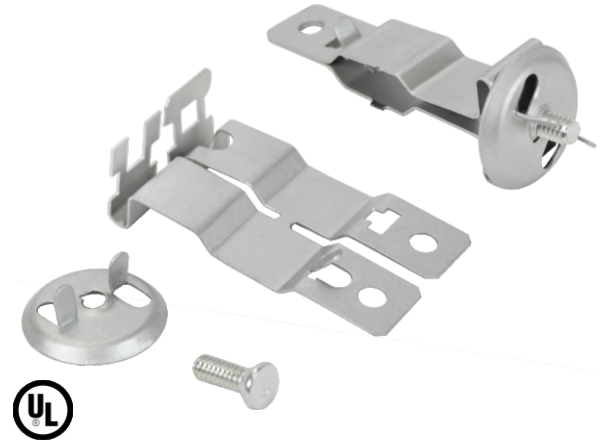


SPECIFICATION & FEATURES

INDEPENDENT SUPPORT CLIP

DESCRIPTION:

Orbit Industries' independent support clip can be easily and fast installed onto T-grid with no tools needed. The clip is used to independently support fixtures from T-grid. The hole on the top is used for suspending and the included screw and wing nut are used to hold fixtures under T-grids.



CERTIFICATION:

UL file E328572, conforms to UL 2239.

FEATURES:

- Spring Steel
- Independent support of fixtures
- No tools needed for installation

CONFIGURATION DATA:

Part No.	T-Grid Size	Flange Thickness	Thread Size	Screw Length	Included Components	Static Load	Std. Pkg.
ISC	15/16"	1/16"	1/4" - 20	9/16"	Washer-Wing Nut	65 LB	100



SPECIFICATION & FEATURES

MULTI PURPOSE CLIP FOR BRIDLE RINGS 1/8" ~ 1/2" FLANGE

DESCRIPTION:

Orbit Industries' multiple purpose clip for bridle rings can be easily and fast installed to flanges with only a hammer. The clip is used to support drive rings and threaded or unthreaded bridle rings.



CERTIFICATION:

UL file E328572, conforms to UL 2239.

FEATURES:

- Spring Steel
- Only hammer needed for installation
- Supports #10-24 and 1/4"-20 threaded bridle rings, unthreaded bridle rings or drive rings from flange

CONFIGURATION DATA:

Part No.	Flange Thickness	Bridle Ring Thread Size	Std. Pkg.
MPC	1/8" ~ 1/2"	#10-24 & 1/4"-20	100



SPECIFICATION & FEATURES

MC/AC CABLE TO METAL STUD CLIP 14-2 ~ 10-3 MC/AC

DESCRIPTION:

Orbit Industries' MC/AC cable to metal stud clip can be easily and fast installed to metal stud with no tools needed. The clip is used for MC or AC cable positioning only.



CERTIFICATION:

UL file E328572, conforms to UL 2239.

FEATURES:

- Spring Steel
- Easy installation for 14-2 to 12-3 MC/AC to metal stud
- No tools needed for installation

CONFIGURATION DATA:

Part No.	Outer Diameter	Stud Clip Size	Std. Pkg.
MSC	0.429" ~ 0.531"	14-2 ~ 12-3	100

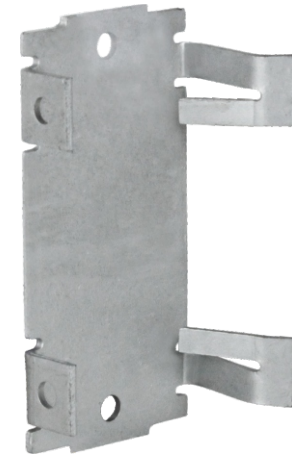


SPECIFICATION & FEATURES

SNAP ON SAFETY PLATE

DESCRIPTION:

Orbit Industries' snap on safety plate can be easily installed on wood or metal studs with no tools. The plate is used to protect cables, conduits, pipes and other attachments from screw or nail penetration. Multiple plates can be ganged together by breaking tabs and the holes on legs can secure plate installation with screw or nail.



CERTIFICATION:

UL file E328572, conforms to UL 2239.

FEATURES:

- Spring Steel
- Protects electrical and mechanical installation through studs
- For wood and metal studs
- No tools needed for installation
- Breakable tabs permit multiple plates to be ganged together
- Complies with NEC Article 300-4, CEC Rule 12-516 and 12-616
- Holes on legs and surface of plate are provided to secure with nail or screw

CONFIGURATION DATA:

Part No.	Height	Width	Std. Pkg.
SOSP	3-1/8"	1-1/2"	100

