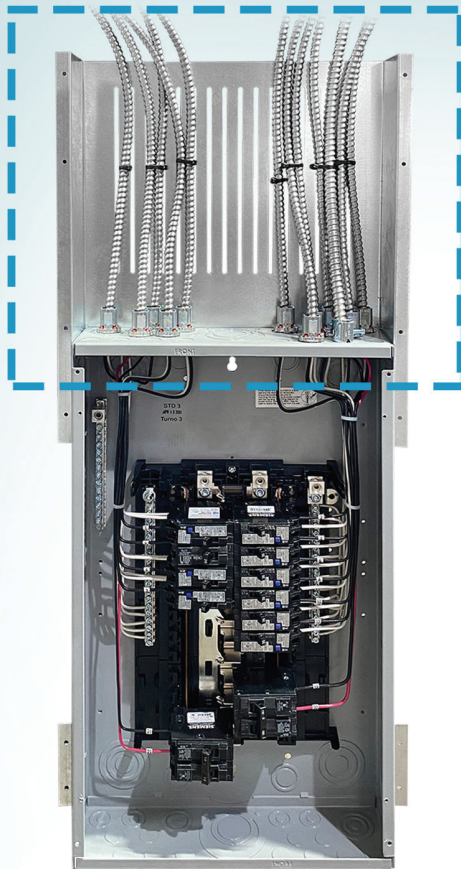
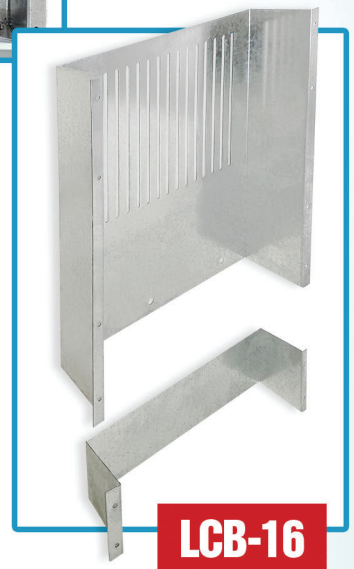


LOAD CENTER BRACKET FOR 16" STUD BAYS



Vertical Cable Slots

*Prepare Load Centers in the shop, ready-to-install on site!**



LCB-16

**Load Center, breakers, fittings and cables not included with LCB-16*



THE BEST WAY TO INSTALL LOAD CENTERS!

LCB-16 with Load Center and MC cable whips, shown prepared for shipment to jobsite*



Custom assembly from:



- *Face-of-stud positive attachment*
- *Two-piece design - easy handling and installation*
- *Vertical Slots support MC/AC or Flex Conduit*
- *Ideal for prefabrication*
- *Attach directly to Load Center using Pop Rivets (by other)*
- *Install panel in 16" Stud Bays using Tek Screws (by other)*
- *Made in USA*

Cat. No.	Description	Std. Pkg.
LCB-16	2-Piece Load Center Bracket w/ Vertical Slots for 16" Studs	10

Los Angeles, CA

Morristown, TN

info@orbitelectric.com

1.800.90.ORBITE (67248)

www.orbitelectric.com

Copyright© 2023, Orbit Industries, Inc. All rights reserved.

ORBFly-26 2023.10