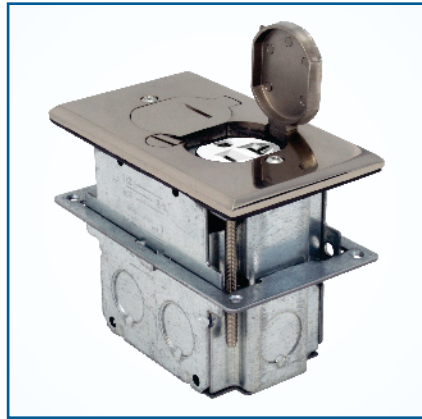


Orbit's extensive selection of wiring devices include floor boxes, sensors, receptacles, switches, wall plates and wall jacks. These high quality products are UL-Listed and come with all the parts necessary for a quick and efficient installation. Furthermore, our wiring devices feature state-of-the-art technology, ensuring that each product delivers a long-lasting and reliable performance while saving energy and improving safety.

## Floor Boxes | Pg. G1~G13



**A SOLUTION TO FIT ALL YOUR POWER NEEDS!**

Ensuring a flush and easy installation in any floor type, Orbit's line of Floor Boxes form a diverse selection of durable products designed to meet all your needs. Choose from 1-Gang, 2-Gang, Pop-Up, PVC boxes and more!

## USB Duplex Receptacles | Pg. G16, G24



**CHARGE MULTIPLE DEVICES WITH EASE**

Orbit's USB Chargers consist of a Duplex Tamper-Resistance Receptacle with two USB charger ports, retaining receptacle usage while still allowing for an adapter-free charge. Available in 15A and 20A models, each with an included wall plate.

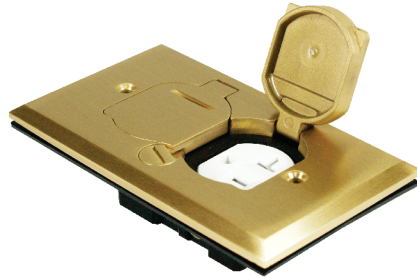


### 1-GANG FLIP & ROUND PLUG TYPE **COVERS**

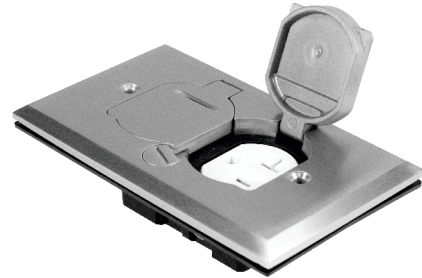
#### INCLUDES

- ▶ Cover
- ▶ Device Plate
- ▶ 20A Tamper-Resistant Receptacle
- ▶ Gasket & Screws
- ▶ Cover Dimensional Drawings found on pg. G9

Assembly Cat. No.	Cover Only Cat. No.	Type	Receptacle	Finish	Std. Pkg.
FLB-D-BR	FLB-D-C-BR	Flip	20A TR Duplex	Brass	10
FLB-D-SS	FLB-D-C-SS	Flip	20A TR Duplex	Stainless Steel	10
FLB-R1G-BR	FLB-R1G-C-BR	Round Plug	20A TR Duplex	Brass	10
FLB-R1G-SS	FLB-R1G-C-SS	Round Plug	20A TR Duplex	Stainless Steel	10



FLB-D-C-BR



FLB-D-C-SS



FLB-R1G-C-BR

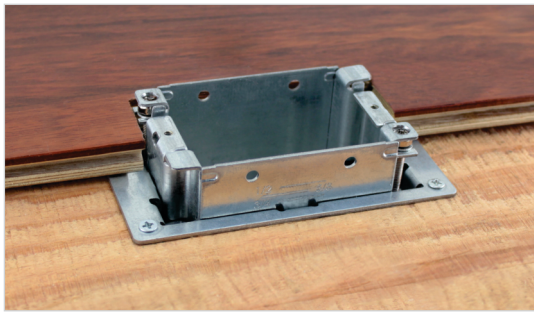


FLB-R1G-C-SS



Side Mount Installation (Fixed)

OR

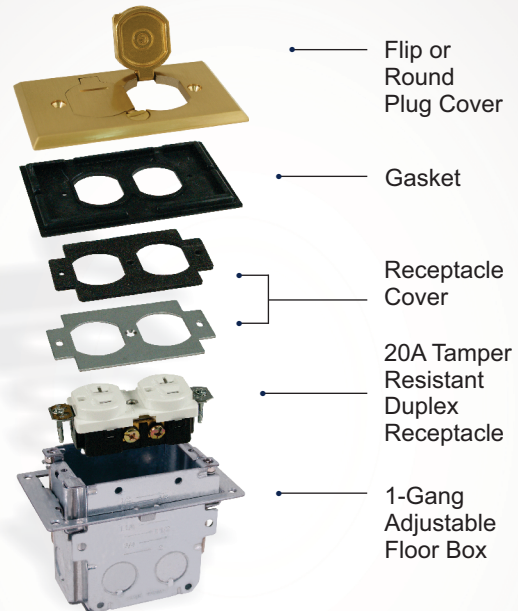


Adjustable from 0" - 2"

#### EXPLODED VIEW

Complete Assembly

Cover Only





## ADJUSTABLE 1-GANG FLIP & ROUND PLUG TYPE FLOOR BOX ASSEMBLIES

### PRODUCT FEATURES

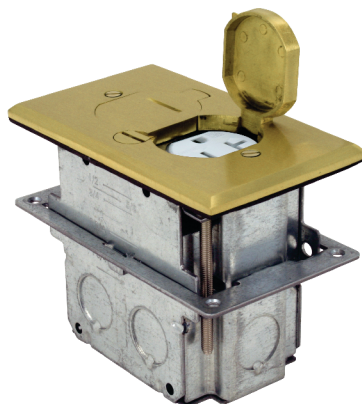
- ▶ 125 VAC
- ▶ 20A tamper-resistant receptacle
- ▶ For use with carpet, tile or wood floors
- ▶ Adjustable floor box ideal for both new and existing work
- ▶ Includes cover, device plate, receptacle, gaskets, screws and adjustable floor box
- ▶ Meets NEC Article 406.12 for tamper-resistant receptacles (for more information see Section W)

**PATENTED**

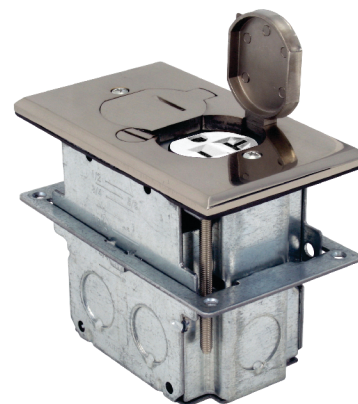
See Page G32 for Keystone Jacks

Cat. No.	Side K.O.'s	Bottom K.O.	Cu. In.
1GAB	(6) - 1/2"	(2) - 1/2"	23.5

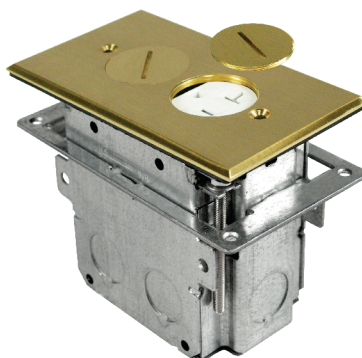
Adjustable Steel Floor Box Only (See Page G9 for Details)



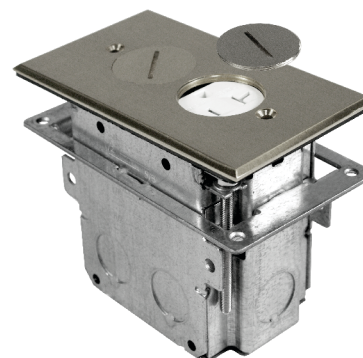
FLB-D-BR



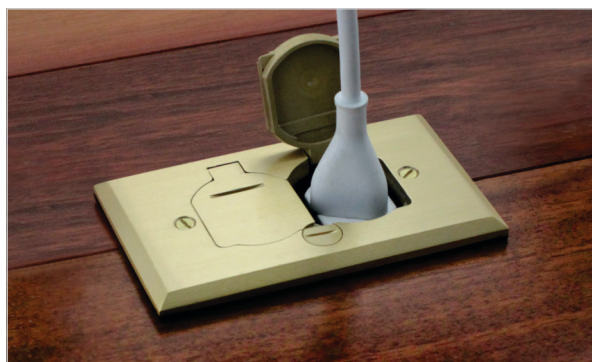
FLB-D-SS



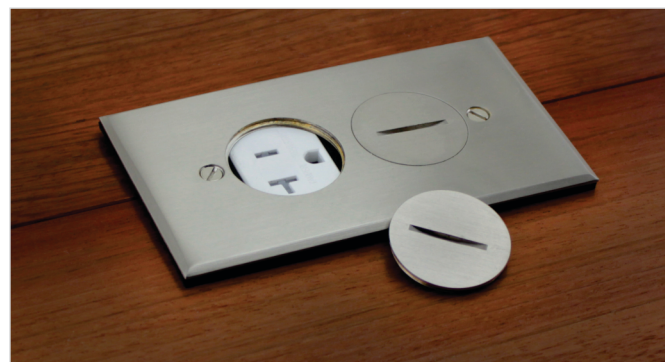
FLB-R1G-BR



FLB-R1G-SS



**FLB-D-BR Shown Installed**  
Brass Adjustable 1-Gang Flip Floor Box



**FLB-R1G-SS Shown Installed**  
Stainless Steel Adjustable 1-Gang Round Plug Floor Box



### 2-GANG FLIP & ROUND PLUG TYPE **COVERS**

#### INCLUDES

- ▶ Cover
- ▶ Device Plate
- ▶ 20A Tamper-Resistant Receptacle
- ▶ Gasket & Screws
- ▶ Cover Dimensional Drawings found on pg. G10

Assembly Cat. No.	Cover Only Cat. No.	Type	Receptacle	Finish	Std. Pkg.
FLB-DD-BR	FLB-DD-C-BR	Flip	(2) 20A TR Duplex	Brass	10
FLB-DD-SS	FLB-DD-C-SS	Flip	(2) 20A TR Duplex	Stainless Steel	10
FLB-R2G-DD-BR	FLB-R2G-DD-C-BR	Round Plug	(2) 20A TR Duplex	Brass	10
FLB-R2G-DD-SS	FLB-R2G-DD-C-SS	Round Plug	(2) 20A TR Duplex	Stainless Steel	10
FLB-R2G-DL-BR	FLB-R2G-DL-C-BR	Round Plug	20A TR Duplex + Keystone Jack Holder	Brass	10
FLB-R2G-DL-SS	FLB-R2G-DL-C-SS	Round Plug	20A TR Duplex + Keystone Jack Holder	Stainless Steel	10
FLB-DL-BR	FLB-DL-C-BR	Flip	20A TR Duplex + Keystone Jack Holder	Brass	10
FLB-DL-SS	FLB-DL-C-SS	Flip	20A TR Duplex + Keystone Jack Holder	Stainless Steel	10



FLB-DD-C-BR



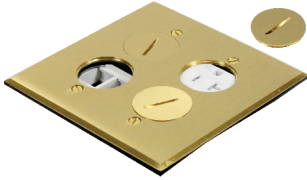
FLB-DD-C-SS



FLB-R2G-DD-C-BR



FLB-R2G-DD-C-SS



FLB-R2G-DL-C-BR



FLB-R2G-DL-C-SS

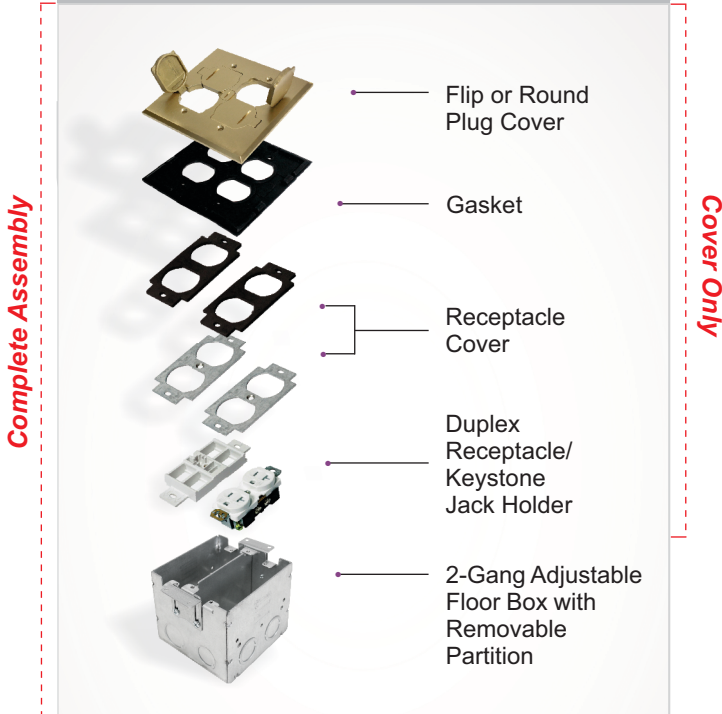


FLB-DL-C-BR



FLB-DL-C-SS

#### EXPLODED VIEW



**FLB-R2G-DD-BR Shown Installed**  
Adjustable 0" - 1"



## ADJUSTABLE 2-GANG FLIP & ROUND PLUG TYPE FLOOR BOX ASSEMBLIES

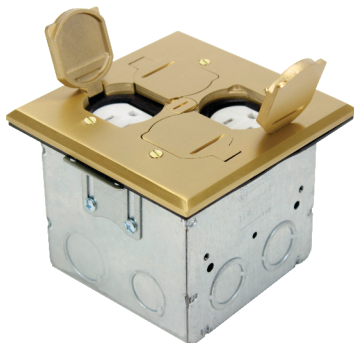
### PRODUCT FEATURES

- ▶ 125 VAC
- ▶ 20A tamper-resistant receptacle
- ▶ For use with carpet, tile or wood floors
- ▶ Steel floor boxes must be installed flush with finished floor prior to final installation
- ▶ Includes cover, receptacle, screws, gasket, device plates and 2-Gang Floor Box with removable partition
- ▶ Meets NEC Article 406.12 for tamper-resistant receptacles (for more information see Section W)

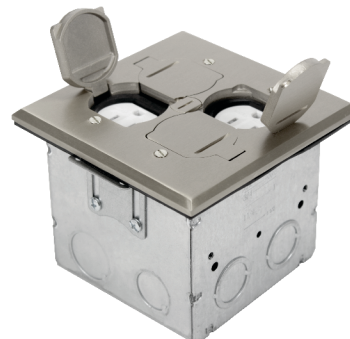
See Page G32 for Keystone Jacks

Cat. No.	Side K.O.'s	Bottom K.O.	Cu. In.
FLB-4SEDB-2G	(2) - 1/2", (2) - 3/4" & (4) CKO	(2) - 1/2" & (2) - 3/4"	46.0

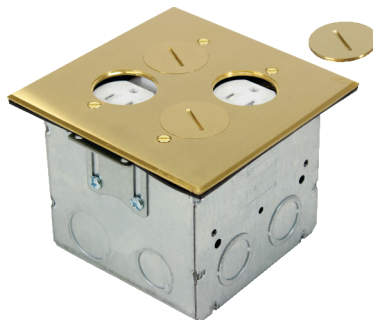
Steel Floor Box Only (See Page G10 for Details)



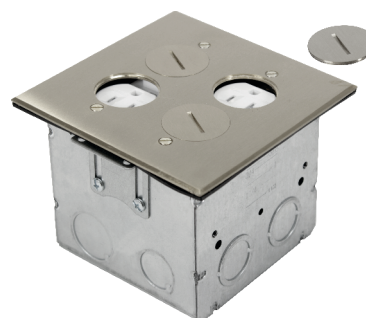
FLB-DD-BR\*



FLB-DD-SS\*



FLB-R2G-DD-BR\*



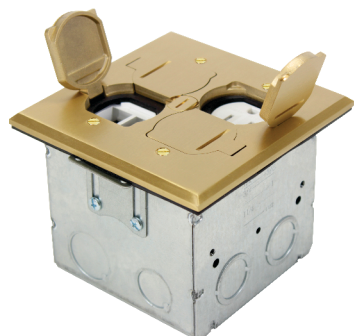
FLB-R2G-DD-SS\*



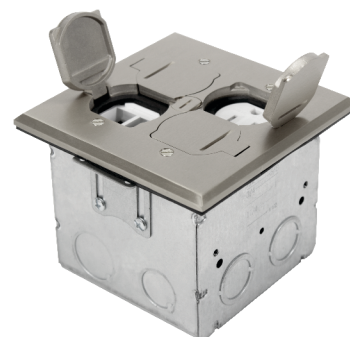
FLB-R2G-DL-BR



FLB-R2G-DL-SS



FLB-DL-BR



FLB-DL-SS



## 1-GANG POP-UP TYPE COVERS

### INCLUDES

- ▶ Cover
- ▶ 20A tamper-resistant receptacle
- ▶ Gasket
- ▶ Screws
- ▶ Cover Dimensional Drawings found on pg. G11

### AVAILABLE OPTIONS: PFLB-R-C

- ▶ PVC Floor Box for Concrete Slab See pg. G12



PFLB-R-C

- 3 Low Voltage ports included

Assembly Cat. No.	Cover Only Cat. No.	Shape	Receptacle	Finish	Std. Pkg.
FLBPU-D-S-BR	FLBPU-D-S-C-BR	Square	20A TR Duplex	Brass	10
FLBPU-D-S-SS	FLBPU-D-S-C-SS	Square	20A TR Duplex	Stainless Steel	10
FLBPU-D-R-BR	FLBPU-D-R-C-BR	Round	20A TR Duplex	Brass	10
FLBPU-D-R-SS	FLBPU-D-R-C-SS	Round	20A TR Duplex	Stainless Steel	10
• FLBPU-L-R-BR	• FLBPU-L-R-C-BR	Round	Low-Voltage (CAT5E)	Brass	10
• FLBPU-L-R-SS	• FLBPU-L-R-C-SS	Round	Low-Voltage (CAT5E)	Stainless Steel	10
• FLBPU-L-S-BR	• FLBPU-L-S-C-BR	Square	Low-Voltage (CAT5E)	Brass	10
• FLBPU-L-S-SS	• FLBPU-L-S-C-SS	Square	Low-Voltage (CAT5E)	Stainless Steel	10
FLBPU-G-R-BR	FLBPU-G-R-C-BR	Round	20A TR Cooper GFCI	Brass	10
FLBPU-G-R-SS	FLBPU-G-R-C-SS	Round	20A TR Cooper GFCI	Stainless Steel	10
FLBPU-DU-R-BR	FLBPU-DU-R-C-BR	Round	20A TR Duplex + (2) USB Ports	Brass	10
FLBPU-DU-R-SS	FLBPU-DU-R-C-SS	Round	20A TR Duplex + (2) USB Ports	Stainless Steel	10



FLBPU-D-S-C-BR



FLBPU-D-S-C-SS



FLBPU-D-R-C-BR



FLBPU-D-R-C-SS



• FLBPU-L-R-C-BR



• FLBPU-L-R-C-SS



• FLBPU-L-S-C-BR



• FLBPU-L-S-C-SS



FLBPU-G-R-C-BR



FLBPU-G-R-C-SS



FLBPU-DU-R-C-BR



FLBPU-DU-R-C-SS





## 1-GANG POP-UP TYPE FLOOR BOX ASSEMBLIES

### PRODUCT FEATURES

- ▶ 125 VAC
- ▶ 20A tamper-resistant receptacle
- ▶ For use with carpet, tile or wood floors
- ▶ Steel floor boxes must be installed flush with finished floor prior to final installation
- ▶ Includes cover, receptacle, screws, and 1-Gang Floor Box
- ▶ Meets NEC Article 406.12 for tamper-resistant receptacles (for more information seen Section W)

- 3 Low Voltage ports included

Cat. No.	Side K.O.'s	Bottom K.O.	Cu. In.
FLB-4SEDB	(2) - 1/2", (2) - 3/4" & (4) CKO	(2) - 1/2" & (2) - 3/4"	46.0

**Steel Floor Box Only (See Page G11 for Details)**



FLBPU-D-S-BR



FLBPU-D-S-SS



FLBPU-D-R-BR



FLBPU-D-R-SS



• FLBPU-L-R-BR



• FLBPU-L-R-SS



• FLBPU-L-S-BR



• FLBPU-L-S-SS



FLBPU-G-R-BR



FLBPU-G-R-SS



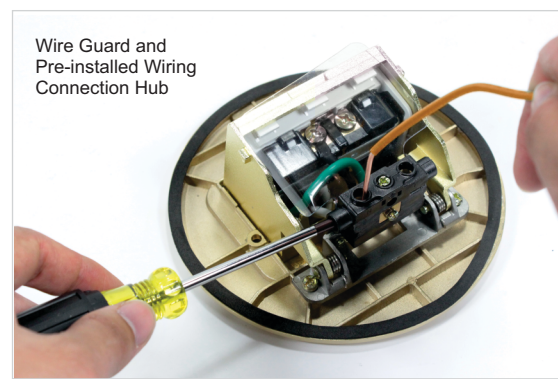
FLBPU-DU-R-BR



FLBPU-DU-R-SS



**FLBPU-G-R-SS Shown Installed**  
1-Gang Pop-Up Type with GFCI



Wire Guard and  
Pre-installed Wiring  
Connection Hub

**Easy Install**  
Labor Saving Quick Connection for  
Duplex Receptacle Models

Wiring Devices



## 2-GANG POP-UP TYPE COVERS

### INCLUDES

- ▶ Cover
- ▶ 20A tamper-resistant receptacle
- ▶ Screws
- ▶ Cover Dimensional Drawings found on pg. G13
- 3 Low Voltage ports included

Assembly Cat. No.	Cover Only Cat. No.	Receptacle	Finish	Std. Pkg.
FLBPU-DD-BR	FLBPU-DD-C-BR	(2) 20A TR Duplex	Brass	10
FLBPU-DD-SS	FLBPU-DD-C-SS	(2) 20A TR Duplex	Stainless Steel	10
• FLBPU-LL-BR	• FLBPU-LL-C-BR	(2) Low-Voltage (CAT5E)	Brass	10
• FLBPU-LL-SS	• FLBPU-LL-C-SS	(2) Low-Voltage (CAT5E)	Stainless Steel	10
• FLBPU-DL-BR	• FLBPU-DL-C-BR	20A TR Duplex + Low-Voltage (CAT5E)	Brass	10
• FLBPU-DL-SS	• FLBPU-DL-C-SS	20A TR Duplex + Low-Voltage (CAT5E)	Stainless Steel	10



FLBPU-DD-C-BR



FLBPU-DD-C-SS



• FLBPU-LL-C-BR



• FLBPU-LL-C-SS



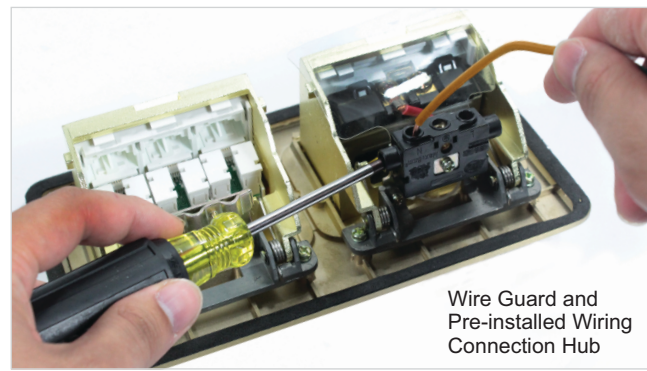
• FLBPU-DL-C-BR



• FLBPU-DL-C-SS



**FLBPU-DL-BR Shown Installed**  
Brass 2-Gang Pop-Up Floor Box



Wire Guard and  
Pre-installed Wiring  
Connection Hub

**Easy Install**  
Labor Saving Quick Connection for Duplex Receptacles



## 2-GANG POP-UP TYPE FLOOR BOX ASSEMBLIES

### PRODUCT FEATURES

- ▶ 125 VAC
- ▶ 20A tamper-resistant receptacle
- ▶ For use with carpet, tile or wood floors
- ▶ Steel floor boxes must be installed flush with finished floor prior to final installation
- ▶ Steel floor box includes partition for combination of Duplex Receptacle & Low Voltage Only
- ▶ Includes cover, receptacle, screws and 2-Gang Floor Box
- ▶ Meets NEC Article 406.12 for tamper-resistant receptacles (for more information see Section W)

- 3 Low Voltage ports included

Cat. No.	Side K.O.'s	Bottom K.O.	Cu. In.
FLB-48DB	(6) - 1/2" & 3/4" CKO, (6) - 3/4" & 1" CKO	(6) - 1/2" & (3) - 3/4"	86.0

**Steel Floor Box Only (See Page G13 for Details)**



FLBPU-DD-BR



FLBPU-DD-SS



• FLBPU-LL-BR



• FLBPU-LL-SS



• FLBPU-DL-BR



• FLBPU-DL-SS



Pop-up Cover retracts when not in use

Wiring Devices



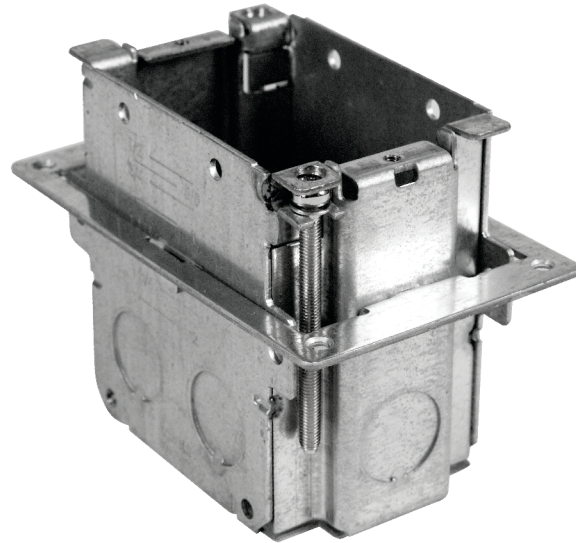
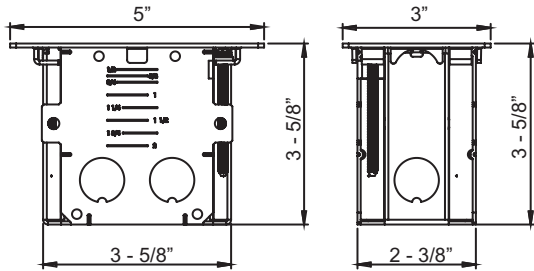
## ADJUSTABLE 1-GANG FLOOR BOX

Cat. No.	Side K.O.'S	Bottom K.O.'S	Cu. In.	Std. Pkg
1GAB	(6) - 1/2"	(2) - 1/2"	23.5	10

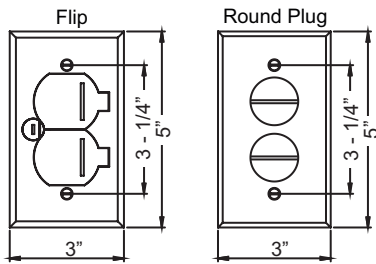
### PRODUCT FEATURES

- ▶ Adjustable from 0" - 2"
- ▶ Can be Side Mounted
- ▶ For Concrete/Floor application, see Section W (314.28 (B))

**PATENTED**

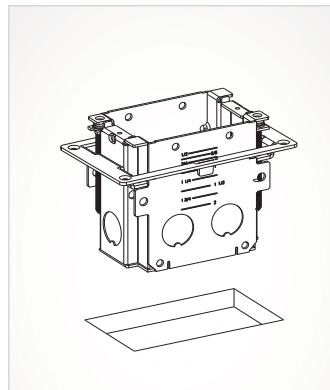


### 1-Gang Adjustable Box

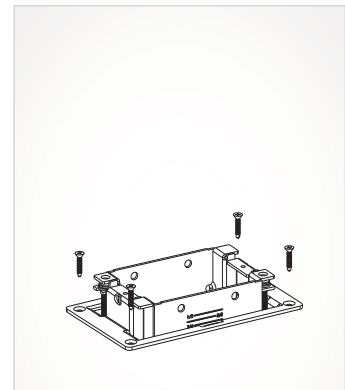


1-Gang Cover

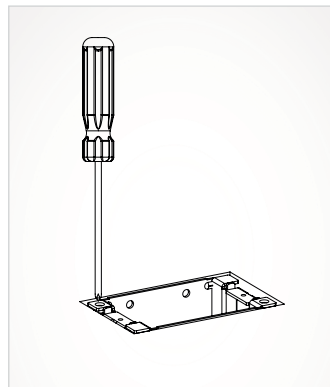
### INSTALLATION



**Step 1:** Cut hole in sub-floor or finished floor.



**Step 2:** Mount floor box to floor with 4 wood screws.

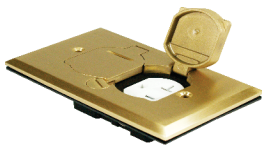


**Step 3:** Adjust floor box flush with finished floor.



**Step 4:** Wire receptacle assembly and install cover and gasket using provided screws.

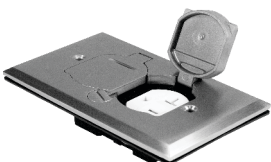
### COMPATIBLE COVERS: Page G1



FLB-D-C-BR



FLB-R1G-C-SS



FLB-D-C-SS



FLB-R1G-C-BR

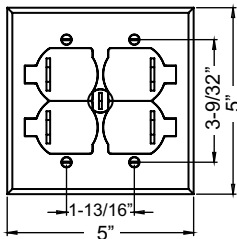
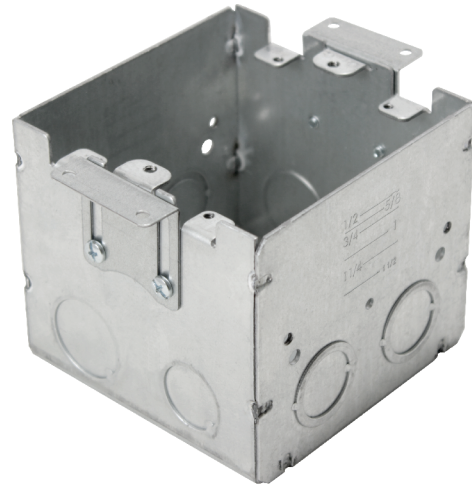


## ADJUSTABLE 2-GANG FLOOR BOX

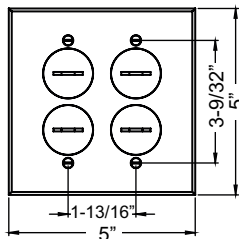
Cat. No.	Side K.O.'S	Bottom K.O.'S	Cu. In.	Std. Pkg.
FLB-4SEDB-2G	(2) - 1/2", (2) - 3/4" & (4) 1/2" & 3/4" CKO	(2) - 1/2" & (2) - 3/4"	46.0	10

### PRODUCT FEATURES

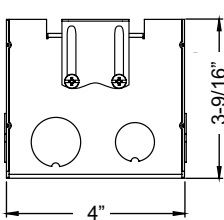
- ▶ Adjustable from 0" - 1"
- ▶ Recessed device mounting tabs allow for cover to be flush with box
- ▶ Removable partition included
- ▶ For Concrete/Floor application, see Section W (314.28 (B))



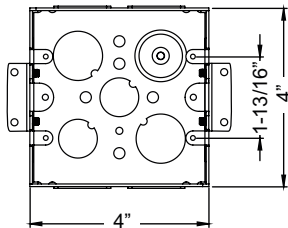
Flip



Round Plug



2-Gang Adjustable Box



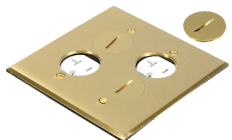
### COMPATIBLE COVERS: Page G3



FLB-R2G-DL-C-BR



FLB-R2G-DL-C-SS



FLB-R2G-DD-C-BR



FLB-R2G-DD-C-SS



FLB-DL-C-BR



FLB-DL-C-SS

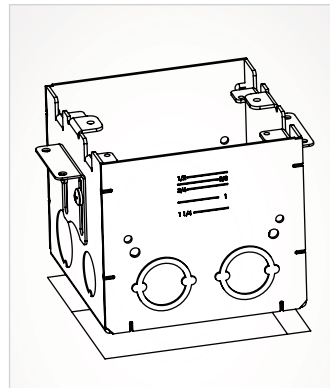


FLB-DD-C-BR

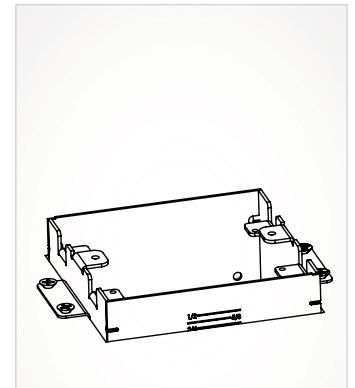


FLB-DD-C-SS

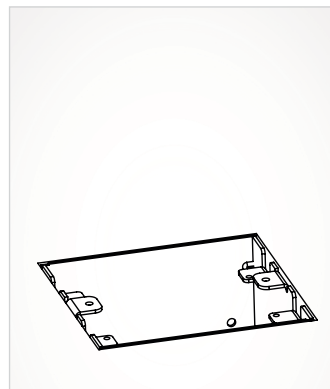
### INSTALLATION



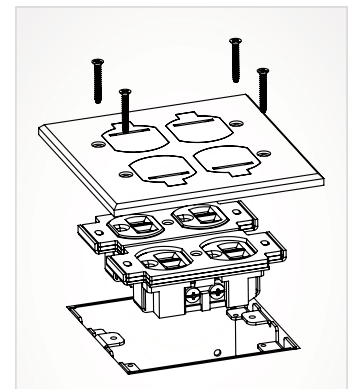
**Step 1:** Cut hole in sub-floor. Adjust floor box to finished floor height.



**Step 2:** Mount floor box to floor with 4 wood screws.



**Step 3:** Install finished floor.



**Step 4:** Wire receptacle assembly and install cover and gasket using provided screws.

Wiring Devices

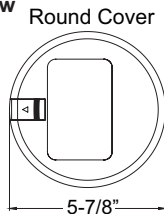
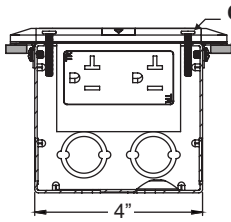
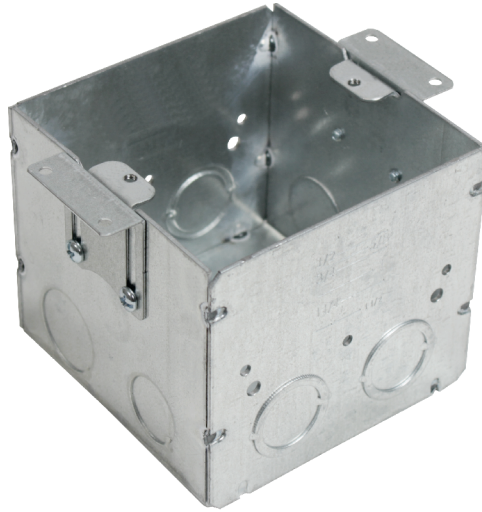
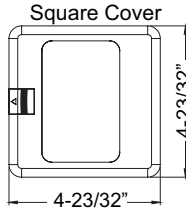
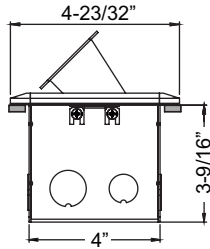


## 1-GANG POP-UP FLOOR BOX

### PRODUCT FEATURES

- ▶ Fits all 1-Gang Pop-Up Covers
- ▶ Steel floor box must be installed flush with finished floor prior to final installation
- ▶ For Concrete/Floor application, see Section W (314.28 (B))

Cat. No.	Side K.O.'S	Bottom K.O.'S	Cu. In.	Std. Pkg.
FLB-4SEDB	(2) - 1/2", (2) - 3/4" & (4) 1/2" & 3/4" CKO	(2) - 1/2" & (2) - 3/4"	46.0	10



1-Gang Floor Box

## INSTALLATION

### COMPATIBLE COVERS: Page G5



FLBPU-D-S-C-BR



FLBPU-D-S-C-SS



FLBPU-L-S-C-BR



FLBPU-L-S-C-SS



FLBPU-D-R-C-BR



FLBPU-D-R-C-SS



FLBPU-L-R-C-BR



FLBPU-L-R-C-SS



FLBPU-G-R-C-BR



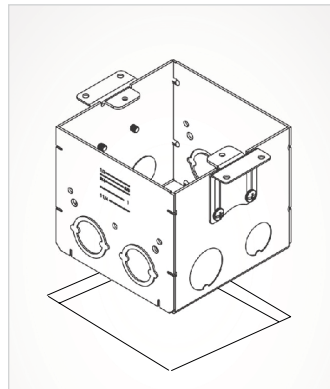
FLBPU-G-R-C-SS



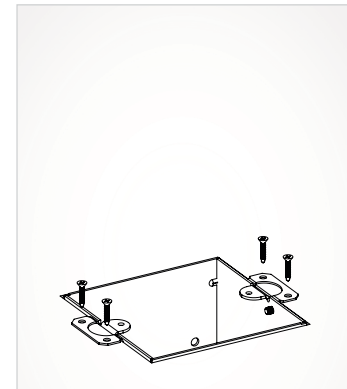
FLBPU-DU-R-C-BR



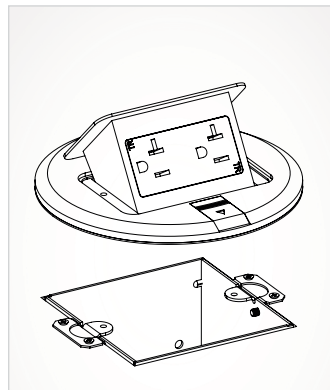
FLBPU-DU-R-C-SS



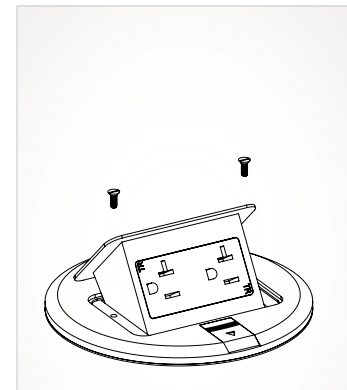
Step 1: Cut hole in finished floor.



Step 2: Mount floor box to floor with 4 wood screws.



Step 3: Wire receptacle.



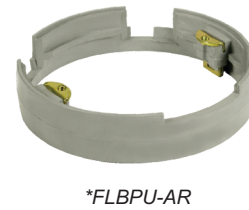
Step 4: Install cover using screws provided.

## PVC FLOOR BOX

### PRODUCT FEATURES

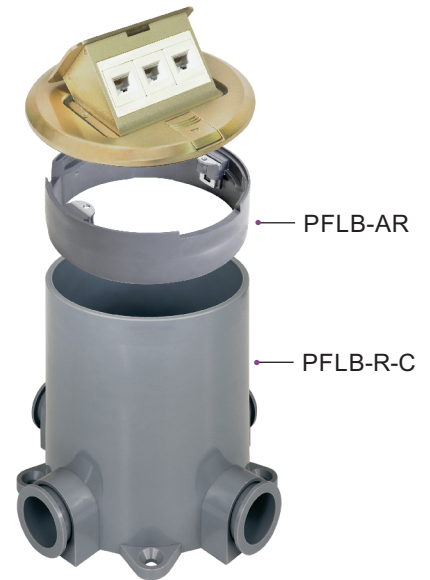
- ▶ PVC for Concrete Slab Installations
- ▶ Minimum Depth 3.75"
- ▶ PFLB-R-C includes cap and plugs
- ▶ Adapter ring, PFLB-AR, (sold separately) allows for installation of 1-Gang Round Pop-Up Floor Box Covers

Cat. No.	Sides Openings	Description	Use With	Cu. In.	Std. Pkg.
<b>PFLB-R-C</b> <small>NEW</small>	(4) - 1" x 3/4"	Round PVC Floor Box for concrete slab installations	PFLB-AR	90	10
<b>PFLB-AR</b> <small>NEW</small>	-	PVC Adapter Ring for Round Floor Box Pop-up Covers <b>(Sold Separately)</b>	PFLB-R-C	-	10
<b>*FLBPU-AR</b>	-	PVC Adapter Ring for Round Floor Box Pop-up Covers <b>(Sold Separately)</b>	E971FB (Carlton)	-	10

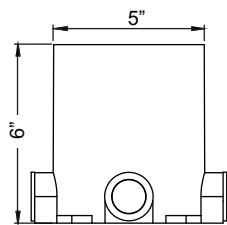


## FLOOR BOX COMPATIBILITY TABLE

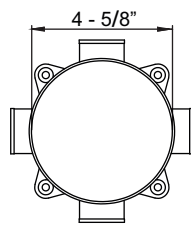
See Page G5 for Details on Orbit's Full Line of Pop-Up Floor Boxes



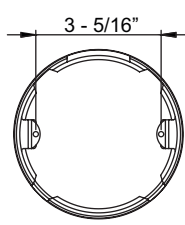
**EXPLODED VIEW OF ASSEMBLY**  
(Sold Separately)



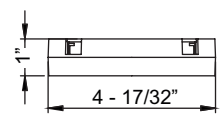
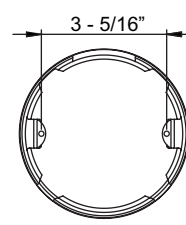
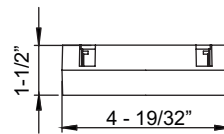
**PFLB-R-C**



**PFLB-AR**



**\*FLBPU-AR**





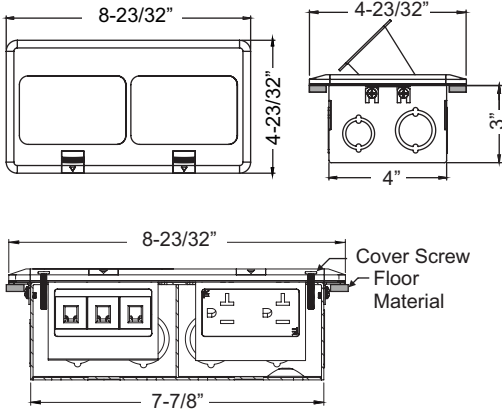


## 2-GANG POP-UP FLOOR BOX

Cat. No.	Side K.O.'S	Bottom K.O.'S	Cu. In.	Std. Pkg.
FLB-48DB	(6) - 1/2" & 3/4" CKO, (6) - 3/4" & 1" CKO	(6) - 1/2" & (3) - 3/4"	86.0	10

### PRODUCT FEATURES

- ▶ Able to install to concrete when using wood concrete forms
- ▶ For Concrete/Floor application, see Section W (314.28 (B))



Wiring Devices

### COMPATIBLE COVERS: Page G7

- Compatible only with 2 Gang Floor Box Partition



FLBPU-DD-C-BR



FLBPU-DD-C-SS



FLBPU-LL-C-BR



FLBPU-LL-C-SS

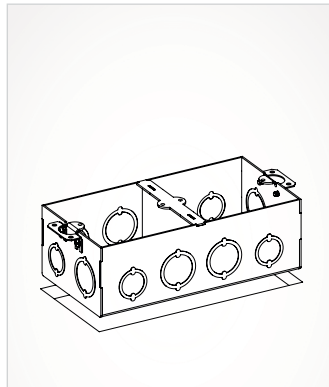


• FLBPU-DL-C-BR

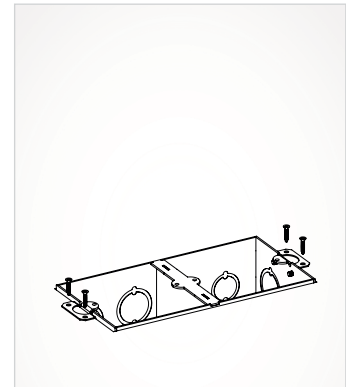


• FLBPU-DL-C-SS

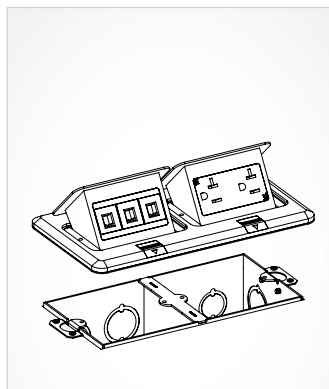
### INSTALLATION



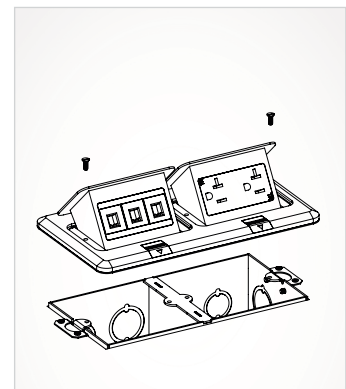
Step 1: Cut hole in finished floor.



Step 2: Mount floor box to floor with 4 wood screws.



Step 3: Wire receptacle assembly.



Step 4: Install cover using screws provided.

## VACANCY SENSORS

### PRODUCT FEATURES

- ▶ Manual ON
- ▶ Automatic OFF after time delay expires and manual OFF option
- ▶ Adjustable time delay from 15 seconds to 30 minutes
- ▶ Adjustable sensitivity settings
- ▶ Passive Infrared Technology
- ▶ 2 year warranty
- ▶ Standard decorative wall plate included
- ▶ Compatible with **MAGNETIC** and **ELECTRONIC BALLAST**

### NOTES

- ▶ Neutral Wire Required
- ▶ **Vacancy Sensors should be initially left ON for 4-5 minutes for first time to function properly**

**TITLE 24 COMPLIANT** 

## OCCUPANCY SENSORS

### PRODUCT FEATURES

- ▶ Turn lights ON/OFF automatically
- ▶ With manual ON/OFF pushbutton
- ▶ Adjustable time delay from 15 seconds to 30 minutes
- ▶ 5 year warranty
- ▶ Standard decorative wall plate included
- ▶ Compatible with **MAGNETIC** and **ELECTRONIC BALLAST**

### OSD-S-W ONLY

- ▶ Choice of Manual-ON or Auto-ON operation
- ▶ Occupancy Mode: Turn lights ON/OFF automatically
- ▶ Vacancy Mode: Manual ON/OFF automatically

### NOTE

- ▶ Neutral wire required

**TITLE 24 COMPLIANT** 

## OCCUPANCY SENSORS

### PRODUCT FEATURES

- ▶ Turn lights ON/OFF automatically
- ▶ With manual ON/OFF pushbutton
- ▶ Built-in VAC selection side button switch
- ▶ Adjustable time delay from 15 seconds to 30 minutes
- ▶ Self Adaptive feature automatically adjusts time delay based on occupants behavior patterns
- ▶ 5 year warranty
- ▶ Standard decorative wall plate included
- ▶ Compatible with **MAGNETIC** and **ELECTRONIC BALLAST**

### NOTE

- ▶ No neutral wire required
- ▶ Ground wire connection required

**TITLE 24 COMPLIANT** 



\*While Supplies Last

Cat. No.	Description	Color (Cat. No. - Color Code)			Std. Pkg.
		White	Ivory	Almond	
*T24VSD-S	Passive Infrared Vacancy Sensor, 180°, 650 Sq. Ft. Coverage RATING: Incandescent: 800W @120VAC Fluorescent: 800VA @120VAC Motor: 1/4HP @ 120VAC	T24VSD-S-W	T24VSD-S-I	T24VSD-S-A	10



Cat. No.	Description	Color (Cat. No. - Color Code)			Std. Pkg.
		White	Ivory	Almond	
OSD-S	Passive Infrared Occupancy Sensor, 180°, 650 Sq. Ft. Coverage RATING: Incandescent: 800W @120VAC Fluorescent: 800VA @120VAC Motor: 1/4HP @ 120VAC	OSD-S-W	*OSD-S-I	*OSD-S-A	10



Cat. No.	Description	Color (Cat. No. - Color Code)			Std. Pkg.
		White	Ivory	Almond	
*OSD-S-2W	Passive Infrared Occupancy Sensor, 180°, 1200 Sq. Ft. Coverage RATING: Incandescent: 800W @120VAC Fluorescent: 800VA @120VAC 1600VA @ 277VAC Motor: 1/4HP @ 120VAC	*OSD-S-2W-W	*OSD-S-2W-I	-	10



**NOTE: Occupancy Sensors should be initially left ON for 4-5 minutes for first time to function properly.**



# G15 | Occupancy Sensors



## OCCUPANCY SENSORS

### PRODUCT FEATURES

- ▶ Turn lights ON/OFF automatically
- ▶ With manual ON/OFF pushbutton
- ▶ Adjustable time delay from 15 seconds to 30 minutes
- ▶ Adjustable sensitivity settings
- ▶ 2 year warranty
- ▶ Standard decorative wall plate included
- ▶ For **MAGNETIC BALLAST** only

### NOTE

- ▶ Neutral wire required

**TITLE 24**  
COMPLIANT 

Cat. No.	Description	Color (Cat. No. - Color Code)			Std. Pkg.
		White	Ivory	Almond	
*OS-P	Passive Infrared Occupancy Sensor, 150°, 450 Sq. Ft. Coverage RATING: Incandescent: 500W @120VAC Fluorescent: 500VA @120VAC Motor: 1/8HP@ 120VAC	OS-P-W	OS-P-I	-	10



## OCCUPANCY SENSORS

### PRODUCT FEATURES

- ▶ Turn lights ON/OFF automatically
- ▶ Use as regular switch with manual ON/OFF setting
- ▶ Adjustable time delay from 15 seconds to 30 minutes
- ▶ Adjustable sensitivity settings
- ▶ 2 year warranty
- ▶ Standard decorative wall plate included
- ▶ For **MAGNETIC BALLAST** only

### NOTE

- ▶ Neutral wire required

Cat. No.	Description	Color (Cat. No. - Color Code)			Std. Pkg.
		White	Ivory	Almond	
*OS-S	Passive Infrared Occupancy Sensor, 150°, 450 Sq. Ft. Coverage RATING: Incandescent: 500W @120VAC Fluorescent: 500VA @120VAC Motor: 1/8HP@ 120VAC	OS-S-W	OS-S-I	-	10



NOTE: Occupancy Sensors should be initially left ON for 4-5 minutes for first time to function properly.

## DECORATIVE RECEPTACLES

### PRODUCT FEATURES

- ▶ 125 VAC
- ▶ Dual USB Ports with 5VDC
- ▶ Charge devices without the need for an adapter
- ▶ Back and side wiring options for easy installation
- ▶ Meets NEC Article 406.12 for tamper-resistant receptacles (for more information see Section W)
- ▶ Wall Plate included

Cat. No.	Description	Std. Pkg.	Master Carton
*DRU15-TR-2A	15A Duplex Receptacle with 2 USB Chargers 5VDC, 2.1A, <b>Tamper Resistant</b>	1	60
*DRU20-TR	20A Duplex Receptacle with 2 USB Chargers 5VDC, 4.0A, <b>Tamper Resistant</b>	1	60



5-15R  
DRU15-TR



5-20R  
DRU20-TR

## RESIDENTIAL GRADE

### DECORATIVE RECEPTACLES

#### PRODUCT FEATURES

- ▶ 125 VAC
- ▶ Self-Grounding
- ▶ Impact-Resistant Thermoplastic Body
- ▶ #14 to #10AWG Side Wire or #14AWG Push-In Back Wire (DR15) #14 to #12AWG Back Wire (DR20)
- ▶ With Combination Head Screws
- ▶ Meets NEC Article 406.12 for tamper resistant receptacles (for more information see Section W)

Cat. No.	Description	Color (Cat. No. - Color Code)				Std. Pkg.	Master Carton
		White	Ivory	Black	Almond		
DR15	15A Decorative Receptacle	DR15-SW	DR15-SI	-	*DR15-SA	10	200
DR15-TR	15A Decorative Receptacle, <b>Tamper Resistant</b>	DR15-TR-SW	DR15-TR-SI	DR15-TR-SBK	*DR15-TR-SA	10	200
DR20	20A Decorative Receptacle	DR20-SW	DR20-SI	*DR20-SBK	*DR20-SA	10	200



5-15R  
DR15



DR15-TR  
**Tamper Resistant**



5-20R  
DR20

## COMMERCIAL GRADE

### DECORATIVE RECEPTACLES

#### PRODUCT FEATURES

- ▶ 125 VAC
- ▶ Self-Grounding
- ▶ Impact-Resistant Thermoplastic Body
- ▶ With integral ground contacts locked into back, body, & face to prevent strap separation
- ▶ #14 to #10 AWG Side Wire
- ▶ With Combination Head Screws

Cat. No.	Description	Color (Cat. No. - Color Code)		Std. Pkg.	Master Carton
		White	Ivory		
CDR15-TR	15A Decorative Receptacle, <b>Tamper Resistant</b>	CDR15-TR-SW	*CDR15-TR-SI	10	200
CDR20-TR	20A Decorative Receptacle, <b>Tamper Resistant</b>	CDR20-TR-SW	-	10	200



5-15R  
CDR15-TR  
**Tamper Resistant**



5-20R  
CDR20-TR  
**Tamper Resistant**



# G17 | Single Receptacles



## COMMERCIAL GRADE

### SINGLE RECEPTACLES

#### PRODUCT FEATURES

- ▶ 125 VAC or 250 VAC
- ▶ Impact-Resistant Thermoplastic Body
- ▶ **With integral ground contacts locked into back, body, & face to prevent strap separation**
- ▶ Up to #10AWG Side Wire
- ▶ With Combination Head Screws
- ▶ Meets NEC Article 406.12 for tamper-resistant receptacles (for more information see Section W)

For use with:

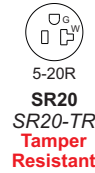
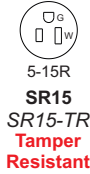
Wallplates	
LEXAN	Stainless Steel
OP7	OS7

For complete wallplate section, see pg. G25 to G31

Industrial Covers	
4S Box	5S Box
4403	5503

For complete industrial cover section, see pg. A13 & A20

Cat. No.	Description	Color (Cat. No. - Color Code)		Std. Pkg.	Master Carton
		White	Ivory		
SR15	15A, 125V Single Receptacle	SR15-W	*SR15-I	10	200
SR15-TR	15A, 125V Single Receptacle, <b>Tamper Resistant</b>	*SR15-TR-W	*SR15-TR-I	10	200
SR20	20A, 125V Single Receptacle	SR20-W	SR20-I	10	200
SR20-TR	20A, 125V Single Receptacle, <b>Tamper Resistant</b>	SR20-TR-W	*SR20-TR-I	10	200
SR15-250	15A, 250V Single Receptacle	SR15-250-W	*SR15-250-I	10	200
SR20-250	20A, 250V Single Receptacle	SR20-250-W	SR20-250-I	10	200



## INDUSTRIAL GRADE

### SINGLE RECEPTACLES

#### PRODUCT FEATURES

- ▶ 125~250 VAC
- ▶ Impact-Resistant Thermoplastic Body
- ▶ #10 to #4 AWG Back Terminals

For use with:

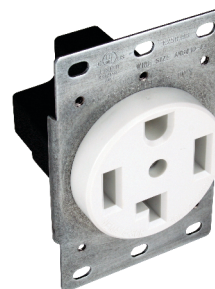
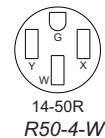
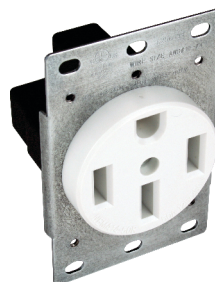
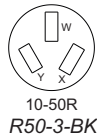
Wallplate	
Stainless Steel	
OS703	

For complete wallplate section, see pg. G25 to G31

Industrial Covers	
4S Box	5S Box
4407	5507

For complete industrial cover section, see pg. A13 & A20

Cat. No.	Description	Color (Cat. No. - Color Code)		Dia.	Std. Pkg.	Master Carton
		Black	White			
R50-3	50A, 3-Pole, 3-Wire Range Receptacle, NEMA 10-50R	R50-3	-	2.11"	10	40
R30-3	30A, 3-Pole, 3-Wire Dryer Receptacle, NEMA 10-30R	R30-3	-	2.11"	10	40
R50-4	50A, 3-Pole, 4-Wire Range Receptacle, NEMA 14-50R	R50-4	R50-4-W	2.11"	10	40
R30-4	30A, 3-Pole, 4-Wire Dryer Receptacle, NEMA 14-30R	R30-4	R30-4-W	2.11"	10	40



## RESIDENTIAL GRADE

### DUPLEX RECEPTACLES

#### PRODUCT FEATURES

- ▶ 125 VAC
- ▶ Self-Grounding
- ▶ Impact-Resistant Thermoplastic Body
- ▶ #14 to #10AWG Side Wire or #14AWG Push-In Back Wire (R15)
- ▶ #14 to #12AWG Back Wire (R20)
- ▶ With Combination Head Screws
- ▶ Meets NEC Article 406.12 for tamper-resistant receptacles (for more information see Section W)

Cat. No.	Description	Color (Cat. No. - Color Code)		Std. Pkg.	Master Carton
		White	Ivory		
R15	15A Duplex Receptacle	R15-SW	R15-SI	10	200
R15-TR	15A Duplex Receptacle, <b>Tamper Resistant</b>	R15-TR-SW	R15-TR-SI	10	200
R20	20A Duplex Receptacle	R20-SW	R20-SI	10	200
R20-TR	20A Duplex Receptacle, <b>Tamper Resistant</b>	R20-TR-SW	*R20-TR-SI	10	200



**Tamper Resistant**  
R15-TR



**Tamper Resistant**  
R20-TR

## COMMERCIAL GRADE

### DUPLEX RECEPTACLES

#### PRODUCT FEATURES

- ▶ 125 VAC
- ▶ Self-Grounding
- ▶ Impact-Resistant Thermoplastic Body
- ▶ **With integral ground contacts locked into back, body, & face to prevent strap separation**
- ▶ #14 to #10 AWG Side Wire
- ▶ With Combination Head Screws
- ▶ Meets NEC Article 406.12 for tamper-resistant receptacles (for more information see Section W)

Cat. No.	Description	Color (Cat. No. - Color Code)		Std. Pkg.	Master Carton
		White	Ivory		
CR15	15A Duplex Receptacle	CR15-W	*CR15-I	10	200
CR15-TR	15A Duplex Receptacle, <b>Tamper Resistant</b>	CR15-TR-SW	*CR15-TR-SI	10	200
CR20	20A Duplex Receptacle	CR20-W	CR20-I	10	200
CR20-TR	20A Duplex Receptacle, <b>Tamper Resistant</b>	CR20-TR-SW	CR20-TR-SI	10	200



**Tamper Resistant**  
CR15-TR



**Tamper Resistant**  
CR20-TR

## HOSPITAL GRADE

### DUPLEX RECEPTACLES

#### PRODUCT FEATURES

- ▶ 125 VAC
- ▶ Thermoplastic Shutter
- ▶ Tamper-Resistant Design
- ▶ Impact-Resistant Nylon Body
- ▶ One-piece Brass Alloy Grounding
- ▶ High Performance Copper Alloy Contacts
- ▶ Encapsulated ground contacts
- ▶ #14 to #10 AWG Side or Back Wiring
- ▶ 8-hole back wiring for feed thru wiring
- ▶ With Combination Head Screws

For use with:

Wallplates	
LEXAN	Stainless Steel
OP8	OS8
For complete wallplate section, see pg. G25 to G31	

Industrial Covers	
4S Box	5S Box
4402	5502
For complete industrial cover section, see pg. A13 & A20	

Cat. No.	Description	Color (Cat. No. - Color Code)			Std. Pkg.	Master Carton
		White	Ivory	Red		
HR15	15A Duplex Receptacle	HR15-W	*HR15-I	*HR15-R	10	200
HR20	20A Duplex Receptacle	HR20-W	*HR20-I	HR20-R	10	200



\*While Supplies Last



# G19 | Duplex Receptacles



## INDUSTRIAL GRADE

### DUPLEX RECEPTACLES

#### PRODUCT FEATURES

- ▶ 125 VAC
- ▶ Self-Grounding
- ▶ Impact-Resistant Thermoplastic Body
- ▶ **With integral ground contacts locked into back, body, & face to prevent strap separation**
- ▶ #14 to #10 AWG Side or Back Wiring Options
- ▶ 8-hole back wiring for feed thru wiring
- ▶ With Combination Head Screws

Cat. No.	Description	Color (Cat. No. - Color Code)		Std. Pkg.	Master Carton
		White	Ivory		
*IR15	15A Duplex Receptacle	*IR15-W	*IR15-I	10	200
*IR20	20A Duplex Receptacle	*IR20-W	*IR20-I	10	200



## INDUSTRIAL GRADE

### DUPLEX RECEPTACLES WITH ISOLATED GROUND

#### PRODUCT FEATURES

- ▶ 125 VAC
- ▶ Self-Grounding
- ▶ Impact-Resistant Thermoplastic Body
- ▶ **With integral ground contacts locked into back, body, & face to prevent strap separation**
- ▶ #14 to #10 AWG Side or Back Wiring Options
- ▶ 8-hole back wiring for feed thru wiring
- ▶ With Combination Head Screws

#### NOTE

- ▶ Isolated Ground Receptacles (IGR) provide protection to critical equipment with an isolated ground path to a building's isolated ground system

Cat. No.	Description	Color (Cat. No. - Color Code)			Std. Pkg.	Master Carton
		Orange	White	Ivory		
IGR15	15A Duplex Receptacle	IGR15-O	*IGR15-W	IGR15-I	10	200
IGR20	20A Duplex Receptacle	IGR20-O	IGR20-W	IGR20-I	10	200



(Back View)

For use with:

Wallplates	
LEXAN	Stainless Steel
OP8	OS8

For complete wallplate section, see pg. G25 to G31

Industrial Covers	
4S Box	5S Box
4402	5502

For complete industrial cover section, see pg. A13 & A20

## RESIDENTIAL GRADE

### TOGGLE SWITCHES

#### PRODUCT FEATURES

- ▶ 120 VAC or 120~277 VAC
- ▶ #14 to #10 AWG Side Wire or #14 AWG Push-In Back Wire
- ▶ With Combination Head Screws
- ▶ Thermoplastic Toggle & Frame Construction
- ▶ Smooth Toggle Action

Cat. No.	Description	Color (Cat. No. - Color Code)			Std. Pkg.	Master Carton
		White	Ivory	Gray		
TS15	15A, 120V Single Pole	TS15-W	TS15-I	-	10	200
TS315	15A, 120V Three-Way	TS315-W	TS315-I	*TS315-G	10	200
TS415	15A, 120~277V Four-Way, Self-Grounding	*TS415-W	TS415-I	-	10	200



TS15



TS315



TS415

## RESIDENTIAL GRADE

### TOGGLE SWITCHES WITH PILOT LIGHT

#### PRODUCT FEATURES

- ▶ 120 VAC or 120~277 VAC
- ▶ #14 to #10 AWG Side Wire or #14 AWG Push-In Back Wire
- ▶ With Combination Head Screws
- ▶ Thermoplastic Toggle & Frame Construction
- ▶ Smooth Toggle Action

Cat. No.	Description	Std. Pkg.	Master Carton
TSL15-CL	15A, 120~277V Single Pole with Pilot Light, Clear	10	200
TSL315-CL	15A, 120V Three-Way with Pilot Light, Clear	10	200



TSL15-CL



TSL315-CL

## COMMERCIAL GRADE

### TOGGLE SWITCHES

#### PRODUCT FEATURES

- ▶ 120 VAC or 120~277 VAC
- ▶ #14 to #10 AWG Side Wire
- ▶ With Combination Head Screws
- ▶ Thermoplastic Toggle & Frame Construction
- ▶ Smooth Toggle Action

For use with:

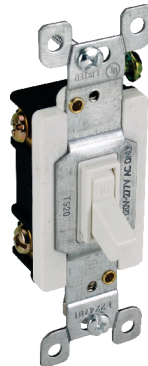
Wallplates	
LEXAN	Stainless Steel
OP1	OS1

For complete wallplate section, see pg. G25 to G31

Industrial Covers	
4S Box	5S Box
4401	5501

For complete industrial cover section, see pg. A13 & A20

Cat. No.	Description	Color (Cat. No. - Color Code)		Std. Pkg.	Master Carton
		White	Ivory		
TS20	20A Single Pole	TS20-W	TS20-I	10	200



TS20-W



TS20-I



\*While Supplies Last



# G21 | Combination Stacked Devices



## RESIDENTIAL GRADE

### DECORATIVE SWITCHES

#### PRODUCT FEATURES

- ▶ 120~277 VAC
- ▶ Rocker-Type
- ▶ Impact-Resistant Thermoplastic Body
- ▶ #14 to #10 AWG Side Wire or #14 AWG Push-In Back Wire
- ▶ With Combination Head Screws

#### ILLUMINATED SWITCHES FEATURE

- ▶ Light glows through the top portion of the switch when in the off position

#### NOTE

- ▶ No neutral wire required

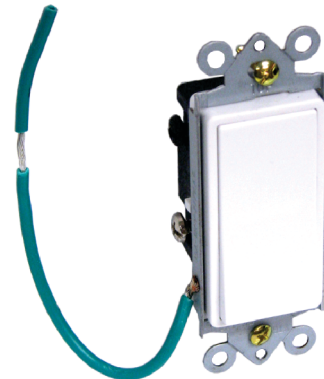
Cat. No.	Description	Color (Cat. No. - Color Code)				Std. Pkg.	Master Carton
		White	Ivory	Black	Almond		
DS15	15A Single-Pole	DS15-W	DS15-I	*DS15-BK	*DS15-A	10	200
DS315	15A Three-Way	DS315-W	DS315-I	*DS315-BK	*DS315-A	10	200
DS415	15A Four-Way with Pigtail	DS415-W	*DS415-I	*DS415-BK	*DS415-A	10	200
DSL15	15A Single-Pole, Illuminated	DSL15-W	DSL15-I	-	-	10	200
DSL315	15A Three-Way, Illuminated	*DSL315-W	*DSL315-I	-	-	10	200



DS15  
DS315



DSL15  
DSL315  
Illuminated



DS415

## RESIDENTIAL GRADE

### DECORATIVE SWITCHES

#### PRODUCT FEATURES

- ▶ 120 VAC or 120~277 VAC
- ▶ Rocker-type
- ▶ Impact-Resistant Thermoplastic Body
- ▶ With Combination Head Screws

For use with:

Wallplates	
LEXAN	Stainless Steel
OP26, OPS26(Snap-on)	OS26
For complete wallplate section, see pg. G24 to G31	

Industrial Covers	
4S Box	5S Box
4404	5504
For complete industrial cover section, see pg. A13 & A20	

Cat. No.	Description	Color (Cat. No. - Color Code)				Std. Pkg.	Master Carton
		White	Ivory	Black	Almond		
2DS15	Double Rocker Switch, 15A, 120~277V Single-Pole Side Wire only	2DS15-W	2DS15-I	*2DS15-BK	*2DS15-A	10	200
3DS15	Triple Rocker Switch, 15A, 120~277V Screw Terminal #12-#14 AWG	3DS15-W	-	*3DS15-BK	*3DS15-A	10	200
DRDS15	Rocker Switch, 15A, 120V Receptacle	*DRDS15-W	*DRDS15-I	*DRDS15-BK	*DRDS15-A	10	200



2DS15



3DS15



DRDS15

## COMMERCIAL GRADE

### STACK DEVICES

#### PRODUCT FEATURES

- ▶ 125 VAC
- ▶ Impact-Resistant Thermoplastic Body
- ▶ With integral ground contacts locked into back, body, & face to prevent strap separation
- ▶ Up to #10AWG Side Wire
- ▶ With Combination Head Screws

For use with:

Wallplates	
LEXAN	Stainless Steel
OP8	OS8
For complete wallplate section, see pg. G25 to G31	

Industrial Covers	
4S Box	5S Box
4402	5502
For complete industrial cover section, see pg. A13 & A20	

Cat. No.	Description	Color (Cat. No. - Color Code)		Std. Pkg.	Master Carton
		White	Ivory		
2TS15	Two 15A Single Pole Toggle Switches	2TS15-W	2TS15-I	10	200
RTS15	15A Single Pole Toggle Switch & 15A Receptacle	RTS15-W	RTS15-I	10	200
PLTS15	15A Single Pole Toggle Switch & Neon Pilot Light	*PLTS15-W	*PLTS15-I	10	200



2TS15



5-15R  
RTS15



PLTS15



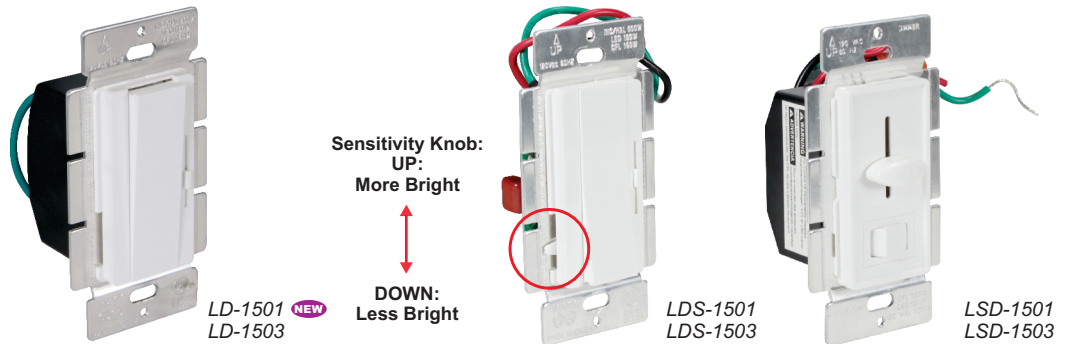
## COMMERCIAL GRADE

### LED DIMMERS

#### PRODUCT FEATURES

- ▶ 120 VAC 60Hz
- ▶ 150W Dimmable LED/CFL
- ▶ 600W Incandescent
- ▶ Ambient operating Temp.: 32 °F to 104 °F (0 °C to 40 °C), 0% to 90% humidity
- ▶ Tough impact-resistant thermoplastic housing
- ▶ Full-range dimming
- ▶ Smooth-action slide control for easy precise operation
- ▶ White Finish

Cat. No.	Description	Std. Pkg.
LD-1501 <small>NEW</small>	LED Decorative Dimmer, Single-Pole	10
LD-1503	LED Decorative Dimmer, Single-Pole/3-Way	10
*LDS-1501	LED Decorative Dimmer, Single-Pole, with sensitivity knob for brightness control	10
*LDS-1503	LED Decorative Dimmer, Single-Pole/3-Way, with sensitivity knob for brightness control	10
LSD-1501	LED Slide Dimmer, Single-Pole	10
LSD-1503	LED Slide Dimmer, Single-Pole/3-Way	10



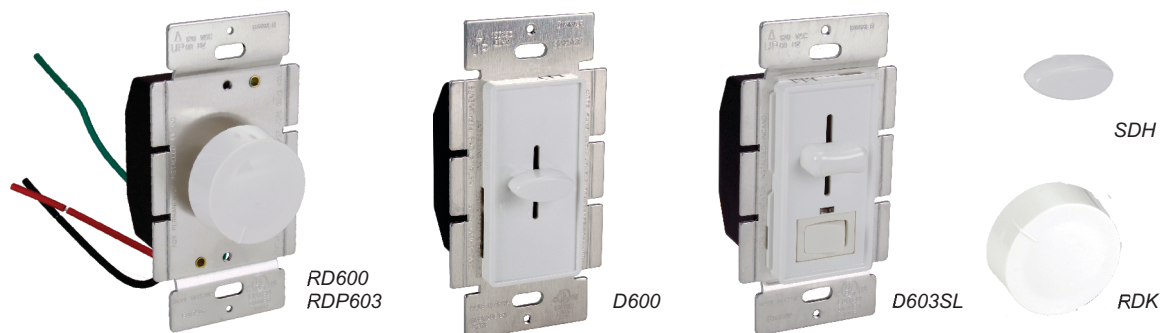
## RESIDENTIAL GRADE

### INCANDESCENT DIMMERS

#### PRODUCT FEATURES

- ▶ 120 VAC
- ▶ 600W
- ▶ With #18AWG Cable Leads
- ▶ Fits Decorative/GFCI Wall plates

Cat. No.	Description	Color (Cat. No. - Color Code)				Std. Pkg.
		White	Ivory	Almond	Black	
*RD600	Single-Pole Rotary Dimmer, Turn to On	*RD600-W	*RD600-I	-	-	10
*RDP603	Single-Pole/3-Way, Rotary Dimmer, Push On/Off Preset	*RDP603-W	-	-	-	10
*RDK	Replacement Knob for Rotary Dimmers	*RDK-W	*RDK-I	-	-	10
*D600	Single-Pole	*D600-W	*D600-I	-	-	10
*D603SL	Single-Pole/3-Way with <b>Preset Switch</b> With LED Light, glows when lights are off	*D603SL-W	*D603SL-I	*D603SL-A	*D603SL-BK	10
*SDH	Slide Dimmer Replacement Handle	*SDH-W	*SDH-I	*SDH-A	-	10



\*While Supplies Last

www.orbitelectric.com





## RESIDENTIAL GRADE

### FLUORESCENT PRESET SLIDE DIMMER

#### PRODUCT FEATURES

- ▶ 120 VAC
- ▶ 600W
- ▶ Magnetic Ballast Only
- ▶ Fits Decorative/GFCI Wallplates

Cat. No.	Description	Color (Cat. No. - Color Code)		Std. Pkg.
		White	Ivory	
*FD503	Single-Pole/3-Way Slide and Switch with Light	*FD503-W	*FD503-I	10



## RESIDENTIAL GRADE

### DIGITAL TIMERS

#### TIE-7

- ▶ Automatic or Manual operation
- ▶ Push control cover to switch ON/OFF at any time
- ▶ Program up to 16 ON/OFF settings per week
- ▶ Large digital LCD display
- ▶ 3 year warranty
- ▶ Standard decorative wall plate included
- ▶ Built-in memory holds settings indefinitely without power
- ▶ White Finish

Cat. No.	Description	Std. Pkg.
*TIE-7	7-Day Heavy Duty Digital In-Wall Timer, 120VAC, 60Hz Resistive rating: 15A, 1800Watts Tungsten rating: 1200Watts Motor Load: 1/2HP	10



## COMMERCIAL GRADE

### SNAP-ON DECORATIVE LEXAN® WALLPLATES

#### PRODUCT FEATURES

- ▶ Resistant to High Abuse
- ▶ 2-Piece (Bracket & Snap-On Face)
- ▶ Screw-less Wall Plates



Cat. No.	Description	Color (Cat. No. - Color Code)				Std. Pkg.	Master Carton
		White	Amond	Black	Ivory		
OPS26	1-GANG	OPS26-W	OPS26-A	*OPS26-BK	OPS26-I	25	200
OPS262	2-GANG	OPS262-W	OPS262-A	*OPS262-BK	OPS262-I	25	200
OPS263	3-GANG	OPS263-W	OPS263-A	-	-	10	200
OPS264	4-GANG	OPS264-W	OPS264-A	-	-	10	200
OPS265	5-GANG	OPS265-W	OPS265-A	-	-	10	200



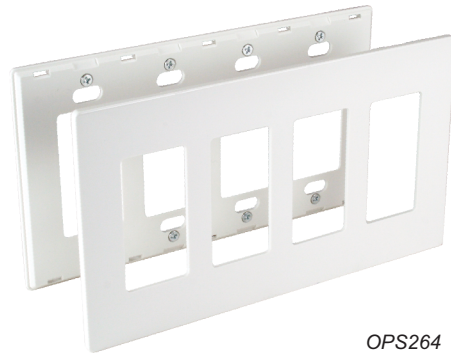
OPS26



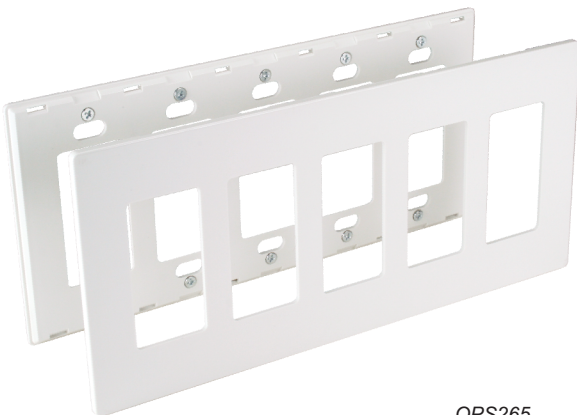
OPS262



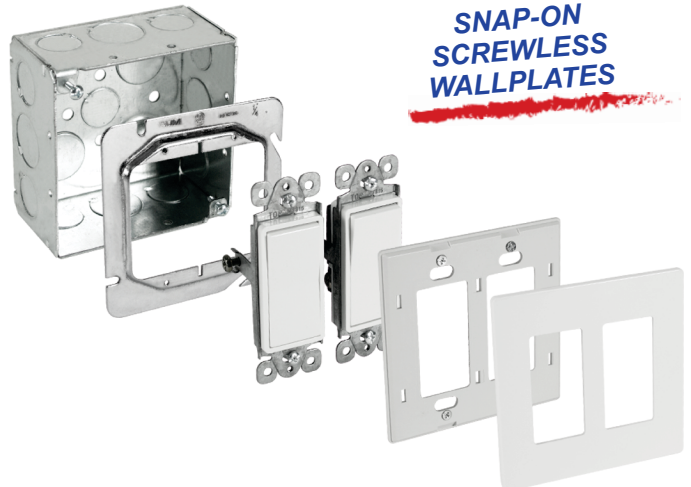
OPS263



OPS264



OPS265



**SNAP-ON  
SCREWLESS  
WALLPLATES**

INSTALLATION VIEW

Wiring Devices



\*While Supplies Last

\*\* Lexan and GE Lexan Logo are registered Trademarks of General Electric Company, GE Plastics Division.

[www.orbitelectric.com](http://www.orbitelectric.com)





# G25 | Lexan Wallplates



## COMMERCIAL GRADE

### STANDARD SIZE LEXAN\* WALLPLATES

#### PRODUCT FEATURES

- ▶ Resistant to High Abuse
- ▶ Painted Screws Included

See pg. G28 & G29 for Mid-Size  
and Jumbo Wallplates



Cat. No.	No. of Gangs	Description	Color (Cat. No. - Color Code)					Std. Pkg.	Master Carton
			White	Ivory	Gray	Orange	Red		
OP1	1	Toggle Switch	OP1-W	OP1-I	*OP1-G	-	-	25	200
OP2	2	Toggle Switch	OP2-W	OP2-I	*OP2-G	-	-	25	200
OP3	3	Toggle Switch	OP3-W	*OP3-I	-	-	-	10	200
OP4	4	Toggle Switch	*OP4-W	*OP4-I	-	-	-	10	200
OP5	5	Toggle Switch	OP5-W	*OP5-I	-	-	-	10	200
OP6	6	Toggle Switch	*OP6-W	*OP6-I	-	-	-	10	200
OP8	1	Duplex Receptacle	OP8-W	OP8-I	*OP8-G	*OP8-O	*OP8-R	25	200
OP82	2	Duplex Receptacle	OP82-W	OP82-I	-	*OP82-O	*OP82-R	25	200
OP83	3	Duplex Receptacle	*OP83-W	*OP83-I	-	-	-	10	200
OP84	4	Duplex Receptacle	*OP84-W	*OP84-I	-	-	-	10	200
OP85	5	Duplex Receptacle	*OP85-W	*OP85-I	-	-	-	10	200
OP86	6	Duplex Receptacle	*OP86-W	*OP86-I	-	-	-	10	200

Wiring Devices



OP1



OP8



OP2



OP82



OP3



OP83

\*\* Lexan and GE Lexan Logo are registered Trademarks of General Electric Company, GE Plastics Division.

## COMMERCIAL GRADE

### STANDARD SIZE LEXAN\* WALLPLATES

#### PRODUCT FEATURES

- ▶ Resistant to High Abuse
- ▶ Painted Screws Included

See pg. G28 & G29 for Mid-Size and Jumbo Wallplates



Cat. No.	No. of Gangs	Description	Color (Cat. No. - Color Code)					Std. Master Pkg. Carton	
			White	Ivory	Black	Almond	Gray		
OP26	1	Decorative or GFCI	OP26-W	OP26-I	*OP26-BK	*OP26-A	-	25	200
OP262	2	Decorative or GFCI	OP262-W	OP262-I	*OP262-BK	*OP262-A	-	25	200
OP263	3	Decorative or GFCI	OP263-W	*OP263-I	*OP263-BK	*OP263-A	-	10	200
OP264	4	Decorative or GFCI	OP264-W	*OP264-I	*OP264-BK	OP264-A	-	10	200
*Op265	5	Decorative or GFCI	*OP265-W	*OP265-I	*OP265-BK	*OP265-A	-	10	200
*Op266	6	Decorative or GFCI	*OP266-W	*OP266-I	*OP266-BK	*OP266-A	-	10	200
<hr/>									
OP13	1	Blank (Box Mount)	OP13-W	OP13-I	-	*OP13-A	-	25	200
OP23	2	Blank (Box Mount)	OP23-W	OP23-I	*OP23-BK	*OP23-A	*OP23-G	25	200
OP33	3	Blank (Box Mount)	OP33-W	*OP33-I	-	*OP33-A	-	10	200
OP43	4	Blank (Box Mount)	OP43-W	*OP43-I	-	*OP43-A	-	10	200
<hr/>									
OP11	1	Phone / Cable, 0.406" Dia.	OP11-W	*OP11-I	*OP11-BK	*OP11-A	-	25	200
*Op21	2	Phone / Cable, 0.406" Dia.	*OP21-W	*OP21-I	*OP21-BK	*OP21-A	-	25	200
<hr/>									
OP737	1	Doorbell Push Button, 0.625" Dia.	OP737-W	*OP737-I	-	-	-	25	200
<hr/>									
OP7	1	Single Receptacle, 1.406" Dia.	OP7-W	*OP7-I	-	-	-	25	200
OP72	2	Single Receptacle, 1.406" Dia.	OP72-W	*OP72-I	-	-	-	25	200



OP26



OP13



OP11



OP262



OP23



OP21



OP737



OP7



OP72



\*While Supplies Last

\*\* Lexan and GE Lexan Logo are registered Trademarks of General Electric Company, GE Plastics Division.



# G27 | Lexan Wallplates



## COMMERCIAL GRADE

### STANDARD SIZE LEXAN\* WALLPLATES

#### PRODUCT FEATURES

- ▶ Resistant to High Abuse
- ▶ Painted Screws Included

See pg. G28 & G29 for Mid-Size  
and Jumbo Wallplates



Cat. No.	No. of Gangs	Description	Color (Cat. No. - Color Code)			Std. Pkg.	Master Carton
			White	Ivory	Almond		
OP113	2	Blank & Toggle Switch	OP113-W	OP113-I	-	25	200
OP813	2	Blank & Duplex	OP813-W	OP813-I	-	25	200
OP1426	2	Blank (Strap) & Decorative or GFCI	OP1426-W	*OP1426-I	OP1426-A	25	200
OP18	2	Toggle Switch & Duplex	OP18-W	*OP18-I	-	25	200
OP126	2	Toggle Switch & Decorative or GFCI	OP126-W	*OP126-I	-	25	200
OP826	2	Duplex & Decorative or GFCI	OP826-W	*OP826-I	-	25	200
OP87	2	Duplex & 1.406" S.R.	OP87-W	*OP87-I	-	25	200
OP226	3	2 Toggle Switches & 1 Decorative or GFCI	OP226-W	*OP226-I	-	10	200
OP28	3	2 Switches & 1 Duplex	*OP28-W	*OP28-I	-	10	200



OP113



OP813



OP1426



OP18



OP126



OP826



OP87



OP226



OP28

\*\* Lexan and GE Lexan Logo are registered Trademarks of General Electric Company, GE Plastics Division.



## COMMERCIAL GRADE

### MID-SIZE LEXAN\* WALLPLATES

#### PRODUCT FEATURES

- ▶ 3/8" Wider and 3/8" Higher than Standard Size Wallplates
- ▶ Resistant to High Abuse
- ▶ Painted Screws Included



Cat. No.	No. of Gangs	Description	Color (Cat. No. - Color Code)		Std. Pkg.	Master Carton
			White	Ivory		
OPM1	1	Toggle Switch	OPM1-W	OPM1-I	25	200
OPM2	2	Toggle Switch	OPM2-W	OPM2-I	25	200
OPM8	1	Duplex Receptacle	OPM8-W	OPM8-I	25	200
OPM82	2	Duplex Receptacle	OPM82-W	OPM82-I	25	200
OPM26	1	Decorative or GFCI	OPM26-W	OPM26-I	25	200
OPM262	2	Decorative or GFCI	OPM262-W	OPM262-I	25	200
OPM13	1	Blank (Box Mount)	OPM13-W	OPM13-I	25	200
OPM23	2	Blank (Box Mount)	OPM23-W	OPM23-I	25	200
OPM126	2	Toggle Switch & Decorative or GFCI	OPM126-W	OPM126-I	25	200
OPM18	2	Toggle Switch & Duplex Receptacle	OPM18-W	OPM18-I	25	200
OPM826	2	Duplex Receptacle & Decorative or GFCI	OPM826-W	OPM826-I	25	200



OPM1



OPM2



OPM8



OPM82



OPM26



OPM262



OPM13



OPM23



OPM126



OPM18



OPM826

Wiring Devices



\*\* Lexan and GE Lexan Logo are registered Trademarks of General Electric Company, GE Plastics Division.



# G29 | Lexan Wallplates



## COMMERCIAL GRADE

### JUMBO LEXAN\* WALLPLATES

#### PRODUCT FEATURES

- ▶ 3/8" Wider and 3/8" Higher than Standard Size Wallplates
- ▶ Resistant to High Abuse
- ▶ Painted Screws Included



Cat. No.	No. of Gangs	Description	Color (Cat. No. - Color Code)		Std. Pkg.	Master Carton
			White	Ivory		
OPJ1	1	Toggle Switch	OPJ1-W	OPJ1-I	25	200
OPJ8	1	Duplex Receptacle	OPJ8-W	OPJ8-I	25	200
OPJ26	1	Decorative or GFCI	OPJ26-W	OPJ26-I	25	200
OPJ13	1	Blank (Box Mount)	OPJ13-W	OPJ13-I	25	200



OPJ1



OPJ8



OPJ26



OPJ13

### WALLPLATE SCREWS

#### PRODUCT FEATURES

- ▶ #6-32 Slot Painted Screws

Cat. No.	Description	Color (Cat. No. - Color Code)		Std. Pkg.	Master Carton
		White	Ivory		
CPS-516	5/16" Cover Plate Screw, Painted	CPS-516-W	CPS-516-I	100	1000
CPS-50	1/2" Cover Plate Screw, Painted	CPS-50-W	CPS-50-I	100	1000
CPS-75	3/4" Cover Plate Screw, Painted	CPS-75-W	CPS-75-I	100	1000
CPS-100	1" Cover Plate Screw, Painted	CPS-100-W	CPS-100-I	100	1000



CPS-516



CPS-50



CPS-75



CPS-100

\*\* Lexan and GE Lexan Logo are registered Trademarks of General Electric Company, GE Plastics Division.

## COMMERCIAL GRADE

### STAINLESS STEEL WALLPLATES

#### PRODUCT FEATURES

- ▶ Fine Brushed Finish
- ▶ Resistant to High Abuse
- ▶ Stainless Screws Included

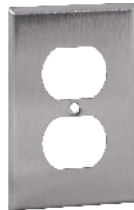
Cat. No.	No. of Gangs	Description	Std. Pkg.	Master Carton
OS13	1	Blank	25	200
OS23	2	Blank	25	100
OS33	3	Blank	10	100
OS43	4	Blank	10	100
OS1	1	Toggle Switch	25	200
OS2	2	Toggle Switch	25	100
OS3	3	Toggle Switch	10	100
OS4	4	Toggle Switch	10	100
OS8	1	Duplex Receptacle	25	200
OS82	2	Duplex Receptacle	25	100
OS83	3	Duplex Receptacle	10	100
OS84	4	Duplex Receptacle	10	100
OS26	1	Decorative or GFCI	25	200
OS262	2	Decorative or GFCI	25	100
OS263	3	Decorative or GFCI	10	100
OS264	4	Decorative or GFCI	10	100



OS13



OS1



OS8



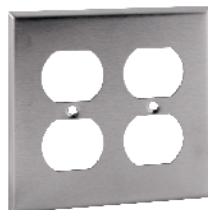
OS26



OS23



OS2



OS82



OS262





# G31 | Stainless Steel Wallplates



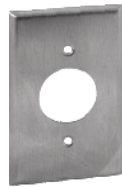
## COMMERCIAL GRADE

### STAINLESS STEEL WALLPLATES

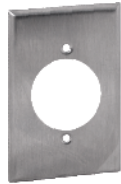
#### PRODUCT FEATURES

- ▶ Fine Brushed Finish
- ▶ Resistant to High Abuse
- ▶ Stainless Screws Included

Cat. No.	No. of Gangs	Description	Std. Pkg.	Master Carton
OS7	1	Single Receptacle, 1.406" Dia.	25	200
OS705	1	Single Receptacle, 1.625" Dia.	25	200
OS11	1	Phone/Cable, 0.406" Dia.	25	200
OS737	1	Doorbell Push Button, 0.625" Dia.	25	200
OS724	1	Power Outlet, 2.156" Dia.	25	200
OS113	2	One Toggle Switch & Blank	25	100
OS18	2	Toggle Switch & Duplex Receptacle	25	100
OS126	2	Toggle Switch & Decorative or GFCI	25	100
OS826	2	Duplex Receptacle & Decorative or GFCI	25	100
OS21	2	Phone/Cable 0.406" Dia.	25	100
OS703	2	Power Outlet, 2.156" Dia.	25	100
OS701	2	Power Outlet, 2.468" Dia.	25	100
OS226	3	Two Toggle Switches & Decorative or GFCI	10	100



OS7



OS705



OS11



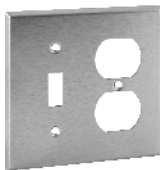
OS737



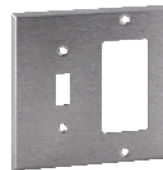
OS724



OS113



OS18



OS126



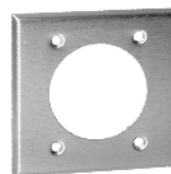
OS826



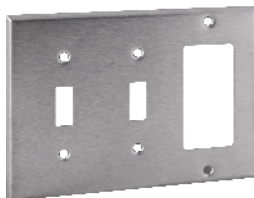
OS21



OS703



OS701



OS226

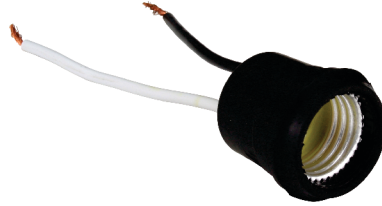
Wiring Devices

## CONSTRUCTION LAMP SOCKET

### PRODUCT FEATURES

- ▶ 250V, 660W
- ▶ Heavy Duty
- ▶ Aluminum screw shell with Rubber Housing
- ▶ With 6"-Long #14AWG Leads
- ▶ Sealed in rubber booth

Cat. No.	Description	Color	Std. Pkg.
CLS	Medium-Base Lamp Socket	Black	25



CLS

## FLOOR BOX ACCESSORIES

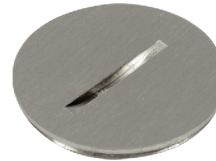
Cat. No.	Description	Color	Std. Pkg.
RP-100-BR	Round Plug 1" for R1G & R2G Covers	Brass	1
RP-100-SS	Round Plug 1" for R1G & R2G Covers	Stainless Steel	1
KJH4P-W	Keystone Jack Holder 4-Port	White	1
KJF-W	Keystone Jack F-Connector	White	1
KJB-W	Keystone Jack Blank	White	1
KJH-W	Keystone Jack Holder HDMI	White	1
KJC5E-W	Keystone Jack CAT5E	White	1
KJC6-W	Keystone Jack CAT6	White	1
KJC6A-W	Keystone Jack CAT6A	White	1



KJH4P-W



RP-100-BR



RP-100-SS



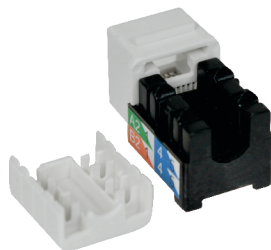
KJF-W



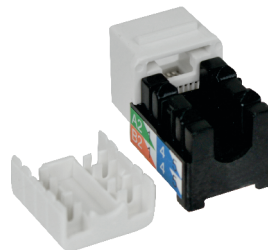
KJB-W



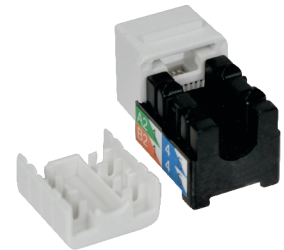
KJH-W



KJC5E-W



KJC6-W



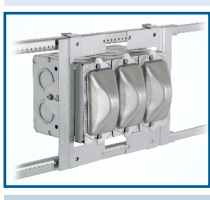
KJC6A-W



## UNIVERSAL PROTECTIVE COVERS

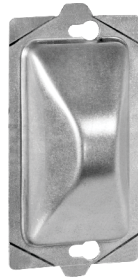
### PRODUCT FEATURES

- ▶ UPC-12MA features domed cover for protecting Toggle & Decora™ -style switches
- ▶ UPC-12MA fits 1 Gang, 2 Gang, Multigang, & Adj. Rings



Multiple UPC-12MA shown installed on SSB-MB3 - Domed cover ideal for protecting Toggle Switch and other devices

Cat. No.	Description	Std. Pkg.
UPC-12MA <small>NEW</small>	Gangable, Steel Universal Protective Cover, fits 1G, 2G, Multigang & Adj. Rings	50
UPC	Gangable, Steel Universal Protective Cover protects any device during drywall, painting, routing, mudding & plastering	25
*UPCTS	Optional Plastic Insert for UPC to protect Toggle Switch	25



UPC-12MA

NEW



UPC



UPCTS



Complete UPC Assembly Shown Installed with Toggle Switch

## 5" ROUND CLOSURE PLATES

### PRODUCT FEATURES

- ▶ Universal Mounting Strap
- ▶ For Covering Up Unused 30 or 40 Boxes



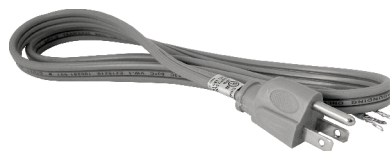
Cat. No.	Description	Std. Pkg.
CP-5	Hard Aluminum 5" Dia. Blank Cover Plate; White	50
CP-5NM	Heavy-duty PVC 5" Dia. Twist-On Box Cover; White	50

## GARBAGE DISPOSAL REPLACEMENT CORDS

### PRODUCT FEATURES

- ▶ 125VAC
- ▶ 16/3 AWG
- ▶ 3-Conductor

Cat. No.	Description	Length Ft.	AMPS	Watts	Color	Product Packaging	Std. Pkg.
PT163S-3	Straight U-Ground Plug	3	13	1625	Gray	Wrapper	100
PT163S-6	Straight U-Ground Plug	6	13	1625	Gray	Wrapper	100
PT163A-3	Right Angle U-Ground Plug	3	13	1625	Gray	Wrapper	100
PT163A-6	Right Angle U-Ground Plug	6	13	1625	Gray	Wrapper	100



PT163S-3  
PT163S-6



PT163A-3  
PT163A-6



## PHOTOELECTRIC CONTROLS

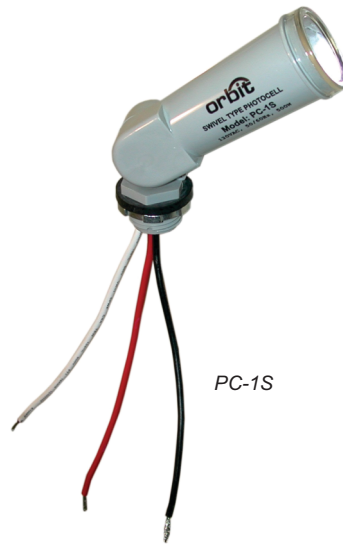
### PRODUCT FEATURES

- ▶ 1.5VA Power Consumption
- ▶ 6-20 Lx On Level
- ▶ 30-60 Lx Off Level
- ▶ 2-Year Warranty

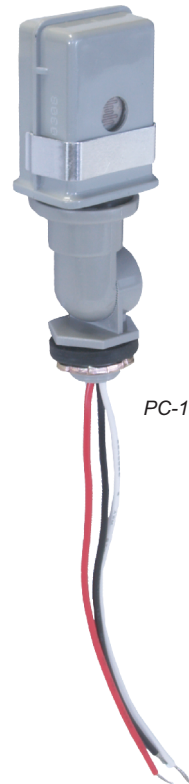
Cat. No.	Description	Rating		Std. Pkg.
		Tungsten	Ballast	
PC-1	120V 50/60Hz, Standard Contractor Grade	2000 W	1900VA	12
PC-1-277	208/277V 50/60Hz, Standard Contractor Grade	2000 W	1900VA	12
PC-1S	120V 50/60Hz, Swivel-Type	1200 W	1000VA	12
PC-1SH	120V 50/60Hz, High-Wattage Swivel-Type	2000 W	1900VA	12
PC-1F	120V 50/60Hz, Wire-In Flush Model	500 W	850VA	12
PC-1F-277	208/277V 50/60Hz, Wire-In Flush Model	500 W	850VA	12
PC-1P	120V 50/60Hz, with Weatherproof Plate & Gasket	500 W	850VA	12
PC-1T	120-277V 50/60Hz, Twist Lock E-Ballast: 8A@120VAC, 5A@208-277VAC	1000 W	1800VA	12



PC-1  
PC-1-277



PC-1S



PC-1SH



PC-1F  
PC-1F-277



PC-1P

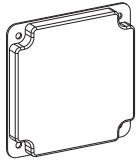


PC-1T

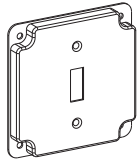
Wiring Devices



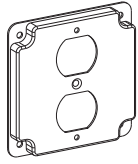
See Steel Industrial Covers on pg. A13 & A20



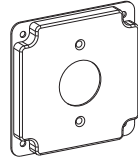
4400



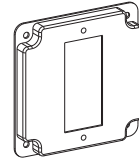
4401



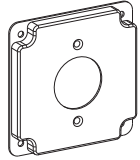
4402



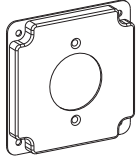
4403



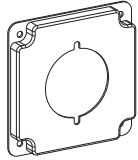
4404



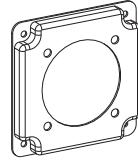
4405



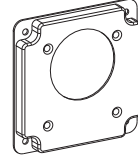
4406



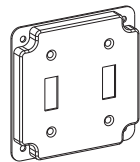
4407



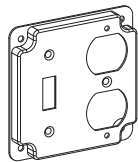
4408



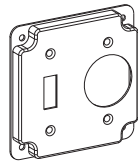
4409



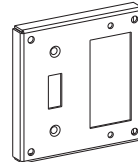
4411



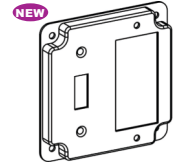
4412



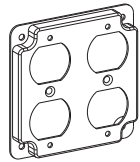
4413



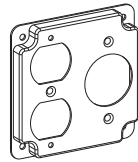
4414



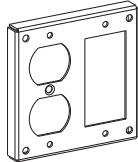
4414C



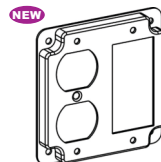
4422



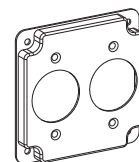
4423



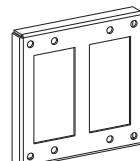
4424



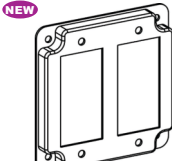
4424C



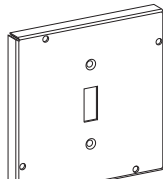
4433



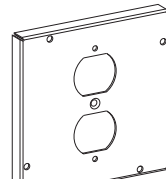
4444



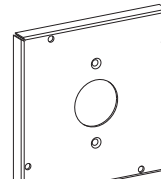
4444C



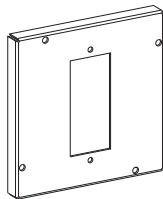
5501



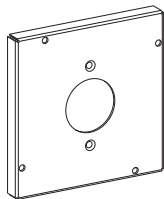
5502



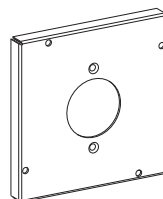
5503



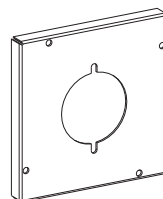
5504



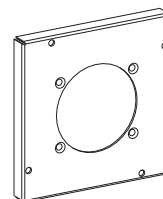
5505



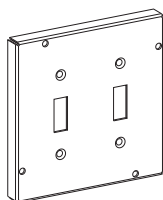
5506



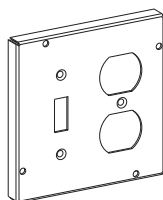
5507



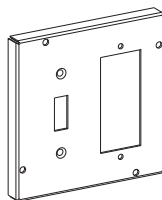
5508



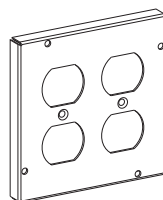
5511



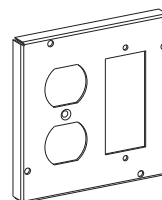
5512



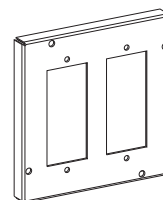
5514



5522



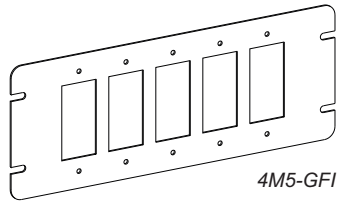
5524



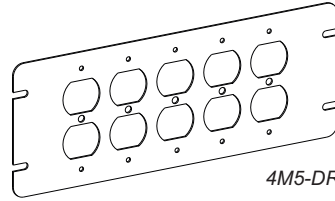
5544



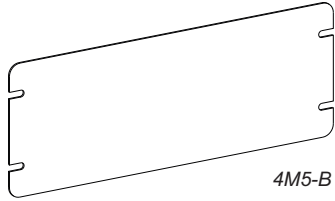
See Multigang and Handy Box Device Covers on pg. A26 & A32



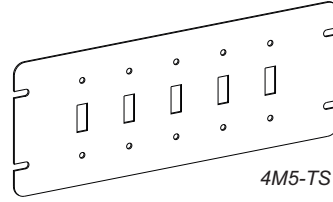
4M5-GFI



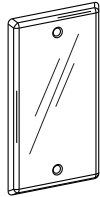
4M5-DR



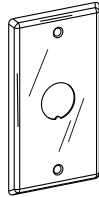
4M5-B



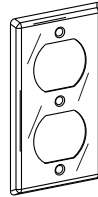
4M5-TS



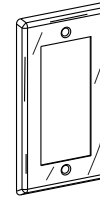
HBC-B



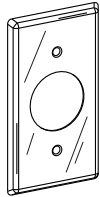
HBC-BK



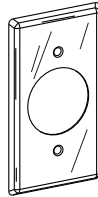
HBC-DR



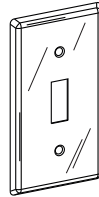
HBC-GFI



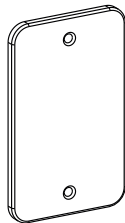
HBC-SR



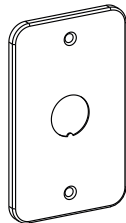
HBC-PO



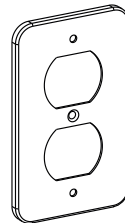
HBC-TS



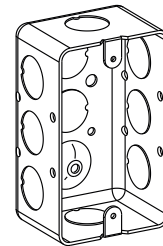
WHBC-B



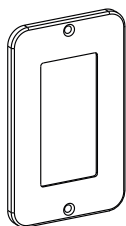
WHBC-BK



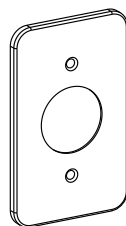
WHBC-DR



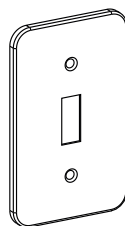
WDHB-1-50



WHBC-GFI



WHBC-SR



WHBC-TS

Wiring Devices