

## EL2HM-LED

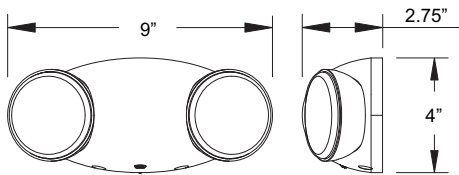
MICRO ADJUSTABLE ROUND HEAD  
LED EMERGENCY LIGHT

### PRODUCT FEATURES

- ▶ Dual-Voltage Input 120/277VAC Operation
- ▶ UL Listed for Damp Location
- ▶ Long-lasting, Energy Saving ultra-bright LED Lamps (0.65W per lamp head)
- ▶ 90 Minutes Minimum Emergency Operation
- ▶ Injection Molded, 5VA Flame Retardant, High Impact, Thermoplastic
- ▶ Fully adjustable, glare-free Lamp Heads
- ▶ Universal Mounting Pattern with 1/2" Knockout
- ▶ Suitable for wall and ceiling mounting
- ▶ High Performance Chrome Plated Reflector
- ▶ Push-to-Test Switch
- ▶ Maintenance-free 3.6V NiCd Battery
- ▶ Fully automatic operation



EL2HM-LED-W



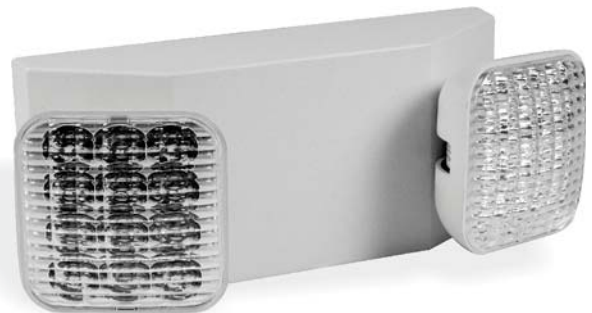
Cat. No.	Housing Color	Options
EL2HM-LED	W (White) B (Black)	HO (High Output)

## EL2NM-LED

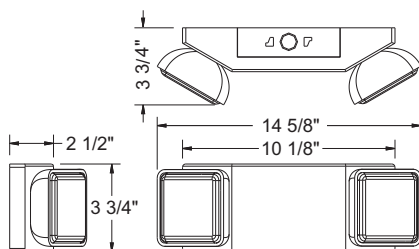
MICRO ADJUSTABLE SQUARE HEAD  
LED EMERGENCY LIGHT

### PRODUCT FEATURES

- ▶ Dual-Voltage Input 120/277VAC Operation
- ▶ UL Listed for Damp Location
- ▶ Long-lasting, Energy Saving ultra-bright LED Lamps (1W per lamp head)
- ▶ 90 Minutes Minimum Emergency Operation
- ▶ Injection Molded, 5VA Flame Retardant, High Impact, Thermoplastic
- ▶ Fully adjustable, glare-free Lamp Heads
- ▶ Universal Mounting Pattern with Quick-Connect
- ▶ Conduit Mount Knockout on top of housing
- ▶ Suitable for wall and ceiling mounting
- ▶ High Performance Chrome Plated Reflector
- ▶ Push-to-Test Switch
- ▶ Maintenance-free 3.6V NiCd Battery
- ▶ Fully automatic operation
- ▶ Remote Capable for up to 2 additional Lamp Heads (**HO Only**)



EL2NM-LED-W



Cat. No.	Housing Color	Options
EL2NM-LED	W (White) B (Black)	HO (High Output) SDT (Self Diagnostic Test)

Exit & Emergency