

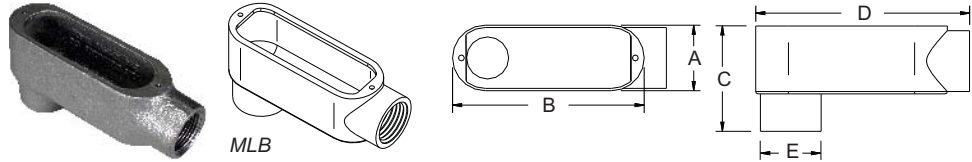
# E7 | Rigid Conduit Bodies - Malleable Iron

## MALLEABLE IRON THREADED CONDUIT BODIES "LB" SERIES

### PRODUCT FEATURES

- ▶ Electroplated Zinc
- ▶ Suitable for wet location when used with Gasket and Cover
- ▶ NPT Thread Hubs

Cat. No.	Trade Size	DIMENSIONS - LB SERIES					Std. Pkg.
		A	B	C	D	E	
MLB-50	1/2"	1-3/8"	4"	2-3/16"	4-5/8"	1-1/2"	10
MLB-75	3/4"	1-5/8"	4-11/16"	2-3/8"	5-3/8"	1-11/16"	10
MLB-100	1"	1-13/16"	5-3/8"	2-7/8"	6-1/4"	2"	5
MLB-125	1-1/4"	2-1/2"	7-1/4"	3-1/2"	8-1/8"	2-5/8"	2
MLB-150	1-1/2"	2-1/2"	7-1/4"	3-11/16"	8-1/8"	2-13/16"	2
MLB-200	2"	3-1/8"	9-1/2"	4-1/2"	10-1/2"	3-1/2"	1
MLB-250	2-1/2"	4-3/8"	12-1/4"	5-7/16"	13-3/4"	4"	1
MLB-300	3"	4-3/8"	12-1/4"	6-3/16"	13-13/16"	4-5/8"	1
MLB-350	3-1/2"	5-1/2"	15"	7-3/16"	16-5/8"	5-7/16"	1
MLB-400	4"	5-1/2"	15"	7-3/8"	16-3/4"	5-3/4"	1

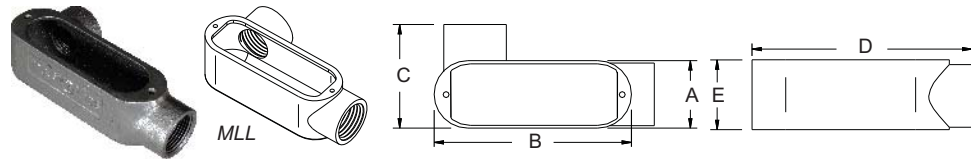


## MALLEABLE IRON THREADED CONDUIT BODIES "LL" SERIES

### PRODUCT FEATURES

- ▶ Electroplated Zinc
- ▶ Suitable for wet location when used with Gasket and Cover
- ▶ NPT Thread Hubs

Cat. No.	Trade Size	DIMENSIONS - LL SERIES					Std. Pkg.
		A	B	C	D	E	
MLL-50	1/2"	1-3/8"	4"	2-1/16"	4-11/16"	1-7/16"	10
MLL-75	3/4"	1-5/8"	4-11/16"	2-1/4"	5-7/16"	1-11/16"	10
MLL-100	1"	1-13/16"	5-3/8"	2-11/16"	6-1/4"	2"	5
MLL-125	1-1/4"	2-1/2"	7-1/4"	3-7/16"	8-1/8"	2-5/8"	2
MLL-150	1-1/2"	2-1/2"	7-1/4"	3-7/16"	8-1/8"	2-13/16"	2
MLL-200	2"	3-1/8"	9-1/2"	4-3/16"	10-1/2"	3-9/16"	1
MLL-250	2-1/2"	4-3/8"	12-1/4"	5-7/8"	13-3/4"	4"	1
MLL-300	3"	4-3/8"	12-1/4"	5-15/16"	13-13/16"	4-11/16"	1
MLL-350	3-1/2"	5-1/2"	15"	7-1/8"	16-5/8"	5-7/16"	1
MLL-400	4"	5-1/2"	15"	7-3/16"	16-5/8"	5-3/4"	1



## MALLEABLE IRON THREADED CONDUIT BODIES "LR" SERIES

### PRODUCT FEATURES

- ▶ Electroplated Zinc
- ▶ Suitable for wet location when used with Gasket and Cover
- ▶ NPT Thread Hubs

Cat. No.	Trade Size	DIMENSIONS - LR SERIES					Std. Pkg.
		A	B	C	D	E	
MLR-50	1/2"	1-3/8"	4"	2-1/16"	4-11/16"	1-7/16"	10
MLR-75	3/4"	1-9/16"	4-11/16"	2-1/4"	5-7/16"	1-11/16"	10
MLR-100	1"	1-13/16"	5-3/8"	2-11/16"	6-5/16"	2"	5
MLR-125	1-1/4"	2-1/2"	7-1/4"	3-3/8"	8-1/8"	2-5/8"	2
MLR-150	1-1/2"	2-1/2"	7-1/4"	3-7/16"	8-1/8"	2-13/16"	2
MLR-200	2"	3-3/16"	9-1/2"	4-1/8"	10-1/2"	3-1/2"	1
MLR-250	2-1/2"	4-7/16"	12-1/4"	5-7/8"	13-3/4"	4"	1
MLR-300	3"	4-7/16"	12-1/4"	5-15/16"	13-13/16"	4-11/16"	1
MLR-350	3-1/2"	5-1/2"	15"	7-1/8"	16-5/8"	5-7/16"	1
MLR-400	4"	5-1/2"	15"	7-3/16"	16-5/8"	5-3/4"	1

