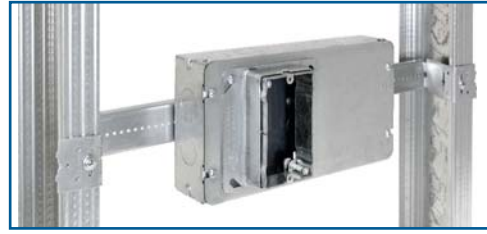




4" Square Ring Adapter for 3-Gang Box | Pg. A27



4M3-4S



4M3-4S Shown Installed on BHA-16, SB-3 & 4AR1G-58

4" Square Ring Adapter for 3-Gang Junction Box transitions a multigang box into a 4" square opening. Ideal in markets where 2-1/2" stud depths are common. Increase box fill volume by 55% (65 Cu. In.) versus deep 4-11/16" Sq., 2-1/8" deep junction boxes (42 Cu. In.). Increased volume allows for more conductors and fittings within tight wall spaces.

Universal Cut-In Box Adapter | Pg. A24, A33, P30



UCIA-4S



FA-UCIA-4S



FIRE ALARM

Small footprint easily concealed by life safety devices



PREFABRICATION

Prepare 4" boxes with UCIA-4S in the shop

Enable any 4" square junction box to be used in old work applications. Installers can quickly mount 4" sq. boxes of any depth into existing walls. Includes two (2) old work clips that firmly secure boxes to finished drywall or plaster, without risk of pull-out. Small footprint is easily covered by large appliances and devices. FA-UCIA-4S is powder coated red for quick identification of FA devices.

PROFAB
ENGINEERED ELECTRICAL SYSTEMS

LOOKING TO INSTALL RIGHT OUT OF THE BOX?

Contact our PROFAB Service Division to discuss solutions for your next big job!

Request a PROFAB consultation today!

1.833.3.PROFAB (776322) | info@orbitprofab.com | www.orbitprofab.com