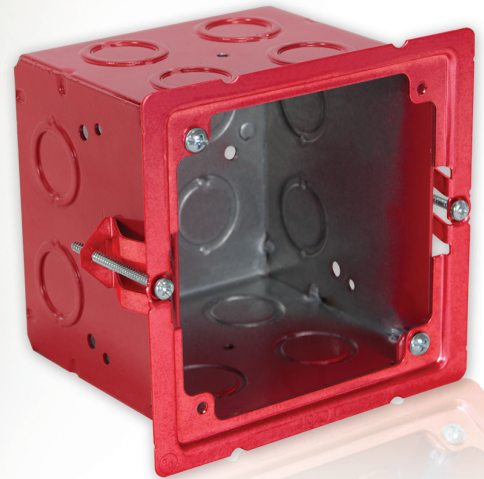


UNIVERSAL CUT-IN BOX ADAPTER

orbit[®]
Orbit Industries, Inc.

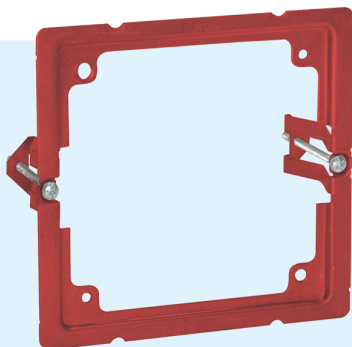


Adapter and box sold separately

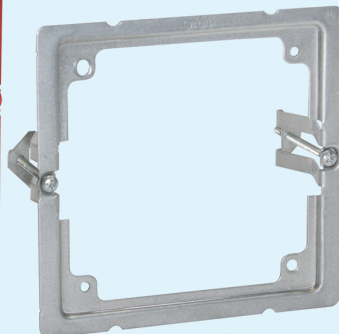


UCIA-4S SERIES

TURN ANY 4" SQUARE BOX INTO AN "OLD WORK" BOX!



FA-UCIA-4S

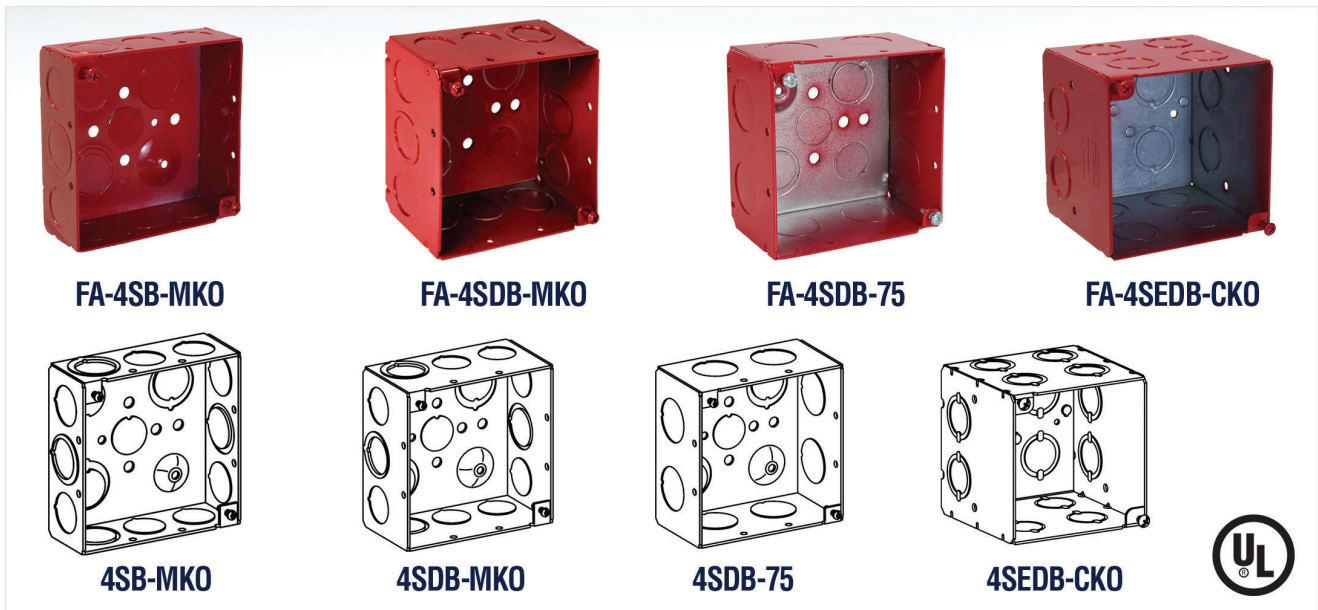


UCIA-4S

Simply install large fire safety devices into existing walls. Faster than ever before!

- Works with 4" boxes of any depth
- Quickly mount any 4" square steel junction box in old work applications
- Two (2) integrated old work steel clips with screws for drywall or other wall materials
- Small footprint is easily concealed by life safety devices greater than 4-7/8" W x 4-3/4" H
- Available in Red powder coat finish for quick identification of FA devices

UNIVERSAL CUT-IN BOX ADAPTER



Cat. No.	Description	Knockouts		Std. Pkg.
		Sides	Bottom	
UCIA-4S	Cut-in adapter for 4" Square Boxes	-	-	20
FA-UCIA-4S	Red Cut-in adapter for 4" Square Boxes	-	-	20
FA-4SB-MKO	Red 4" Square, 1-1/2" Deep Box	8 - 1/2", 4 - MKO	2 - 1/2", 2 - MKO	50
FA-4SDB-MKO	Red 4" Square, 2-1/8" Deep Box	8 - 1/2", 4 - MKO	2 - 1/2", 2 - MKO	24
FA-4SDB-75	Red 4" Square, 2-1/8" Deep Box	8 - 3/4"	2 - 1/2", 2 - MKO	24
FA-4SEDB-CKO	Red 4" Square, 3-1/2" Deep Box	12 - CKO	4 - CKO	24
4SB-MKO	4" Square, 1-1/2" Deep Box	8 - 1/2", 4 - MKO	2 - 1/2", 2 - MKO	50
4SDB-MKO	4" Square, 2-1/8" Deep box	8 - 1/2", 4 - MKO	2 - 1/2", 2 - MKO	24
4SDB-75	4" Square, 2-1/8" Deep Box	8 - 3/4"	2 - 1/2", 2 - MKO	24
4SEDB-CKO	4" Square, 3-1/2" Deep Box	12 - CKO	4 - CKO	24

VISIT UCIA-4S PRODUCT PAGE ON OUR WEBSITE TO PRINT A CUT-OUT TEMPLATE

Orbit UCIA-4S & FA-UCIA-4S Installation Instruction

Step 1: Print this page. Using scissors, cut along the solid line of this template. Using a pencil, sketch along the outline to transfer the shape of this template onto the wall at the desired location. Ensure sides of template are at least 1" from the edge of the nearest wall stud.

Step 2: Using a drill saw, cut along the template outline, creating an opening.

INSTALLERS NOTE: UCIA-4S / FA-UCIA-4S features two (2) threaded and two (2) non-threaded mounting holes, located at opposing ends of the adapter opening. Please identify these mounting holes before proceeding to steps 3-5.

Step 3: Position a 4" square electrical box behind UCIA-4S / FA-UCIA-4S, and align the adapter's non-threaded mounting holes with box mounting holes. Pass the mounting screws (included with adapter) through the UCIA-4S / FA-UCIA-4S unthreaded holes. Using a Phillips-head screwdriver, tighten the screws until box is seated into adapter. For low-voltage devices, Orbit's UCIA-4S can be used without a back box. For Orbit 42000 or 42000 device ring to the UCIA-4S / FA-UCIA-4S using two (2) #8-32 screws. Then, attach device directly to the device ring. Please check your local code to ensure compliance.

Step 4: Press UCIA-4S / FA-UCIA-4S into the wall opening. Using a power drill or screwdriver, drive the adapter fastening screws clockwise until the adapter snaps firmly into the wall. Do not over-tighten.

Step 5: To finish wiring the device, please follow the device manufacturer's installation instructions. Use the adapter's threaded holes to secure devices if necessary.

PROFAB ENGINEERED ELECTRICAL SYSTEMS

LOOKING TO INSTALL RIGHT OUT OF THE BOX?

Contact our PROFAB Service Division to Pre-Assemble UCIA-4S with any 4" Sq. Box of your choice!

Request a PROFAB consultation today!

1.833.3.PROFAB(776322) | info@orbitprofab.com | www.orbitprofab.com