

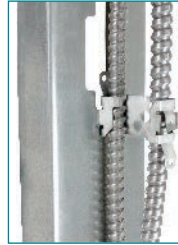
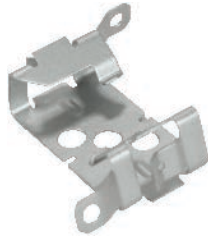


SPRING STEEL MC/AC CABLE TO STUD CLIP

PRODUCT FEATURES

- ▶ No tools required to install
- ▶ Holes in clip allow it to be screwed into wood stud, concrete or block
- ▶ Stabilizer legs provide "wobble-free" support
- ▶ Compliant with NEC® Article 300.4(d), allowing cable to be positioned a minimum of 1-1/4" from face of stud
- ▶ Compliant with CEC Rule 12-618 for support of MC/AC cable
- ▶ Snaps in half, making two clips out of one

Cat. No.	Flange Thickness	MC/AC Size	Std. Pkg.
FMAC2	1/8" MAX	14/2 to 10/3	100



SPRING STEEL MC/AC CABLE TO METAL STUD CLIP

PRODUCT FEATURES

- ▶ Easy installation of MC/AC to metal stud
- ▶ No tools required to install

Cat. No.	Outer Diameter	MC/AC Size	Std. Pkg.
MSC	0.429" - 0.531"	14/2 to 12/3	100



STAMPED STEEL NAIL STRAPS

PRODUCT FEATURES

- ▶ Electroplated Zinc

NOTES

- ▶ Varies according to sizes

Cat. No.	EMT Size	FLEX Size	Std. Pkg.	Master Ctn.
NS-50	1/2"	3/8"	100	1000
NS-50/75	3/4"	1/2"	100	1000
NS-100	1"	3/4"	100	1000



PRE-GALVANIZED STEEL STUD MOUNTING CABLE SUPPORT

PRODUCT FEATURES

- ▶ Wood or Metal Stud
- ▶ Easy to Lock
- ▶ Space saving packing

Cat. No.	Description	Non-Metallic	MC/AC/BX	Std. Pkg.
CS-CJ6	Stud Mounting Cable Support with locking tab	Max. 6	Max. 4	100

