

EXTRA DUTY IN-USE COVERS WITH INTERCHANGEABLE INSERTS

PRODUCT FEATURES

- ▶ Gray finish
- ▶ Clean installation with no break-off parts
- ▶ **Non-Metallic:**
Impact-Resistant Thermoplastic
- ▶ **Metallic:**
Heavy-Duty Die Cast Metal
- ▶ Pad lockable design
- ▶ Pre-installed Adhesive Gasket
- ▶ Extra large cord opening with rubber flaps that minimize debris
- ▶ Complies with NEC Article 406.9 (A)(B)(1)(2) for "EXTRA DUTY" & damp and wet locations (for more information see Section W)

Easy-to-Assemble Building-Block Style Adapters Accommodate a Wide Range of Wiring Devices



1-Gang Models Include:

- 1 x Toggle Switch
- 1 x Duplex Receptacle
- 1 x GFCI/Decorative
- 1 x 1-3/8"
- 1 x 1-9/16"~1-5/8"
- 1 x 1-11/16"
- 1 x 2-1/8"

2-Gang Models Include:

- 2 x Toggle Switch
- 2 x Duplex Receptacle
- 2 x GFCI/Decorative
- 2 x 1-3/8"
- 3 x 1-9/16"~1-5/8"
- 1 x 1-11/16"
- 1 x 2-1/8"
- 1 x 2-5/8"

Cat. No.	Description	Std. Pkg.
WIU-1U-ED	1-Gang Universal, Non-Metallic, 2-3/4" Deep	8
WIU-1UD-ED	1-Gang Universal, Non-Metallic, 3-1/2" Deep	8
WIUM-1DV	1-Gang Vertical, Metallic, 2-3/4" & 4", Multi Depth	10
WIUM-1DH	1-Gang Horizontal, Metallic, 2-3/4" & 3-1/2", Multi Depth	10
WIU-2UD-ED	2-Gang, Non-Metallic, 3-1/2" Deep	6
WIUM-2U	2-Gang, Metallic, 3-1/4" & 4-1/2", Multi Depth	10

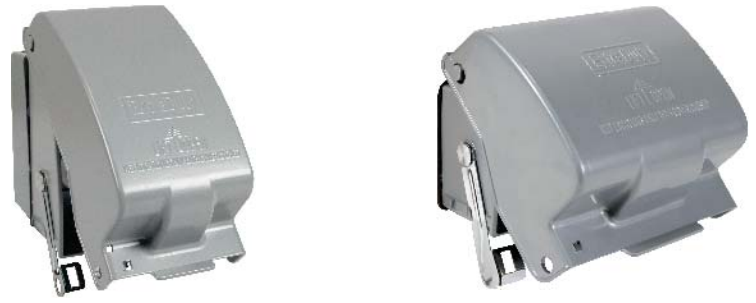
14 IN 1



WIU-1U-ED
2-3/4" Deep

WIU-1UD-ED
3-1/2" Deep

7 IN 1



WIUM-1DV (Metal)
Expands 2-3/4" & 4"

WIUM-1DH (Metal)
Expands 2-3/4" & 3-1/2"

31 IN 1



WIU-2UD-ED
3-1/2" Deep

WIUM-2U (Metal)
Expands 3-1/4" & 4-1/2"

Weatherproof