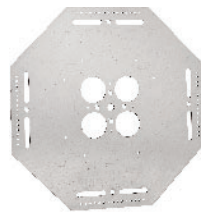


BOX AND CONDUIT HANGER SUPPORT PLATES

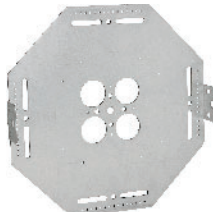
PRODUCT FEATURES

- ▶ Support suspended boxes and multiple conduit installations with one piece of all-thread as opposed to multiple pieces of rod
- ▶ Pin holes and slots allow for use of conduit straps
- ▶ Stamped markings provide guidelines for box placement. Boxes can be placed in any location on plate.
- ▶ Pre-Galvanized 15 Gauge Steel Self-reinforcing as more conduit is added
- ▶ Easy to preassemble to save time and material
- ▶ **BCHS-6S & BCHS-8S** contains offset for use of one-hole straps in place of traditional pipe hangers
- ▶ **BCHS-12** pairs well with Orbit Exclusive 12124-50 & 12124-850

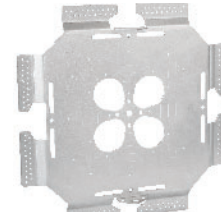
Cat. No.	Description	Std. Pkg.
BCHS-10	Fits up to 6" x 6" Box or multiple smaller boxes for horizontal mounting	25
BCHS-6	Fits up to 6" x 6" Box or multiple smaller boxes for horizontal mounting and provides bent tabs for vertical mounting	10
BCHS-6S	Fits up to 8" x 8" Box or multiple smaller boxes for horizontal mounting, bent tabs for vertical mounting and offsets allow for use of one-hole straps	10
BCHS-8S <small>NEW</small>	Fits up to 8" x 8" Box or multiple smaller boxes for horizontal mounting, bent tabs for vertical mounting and offsets allow for use of one-hole straps	10
BCHS-12	Fits up to 12" x 12" Box or multiple smaller boxes for horizontal mounting, bent tabs for vertical mounting	5



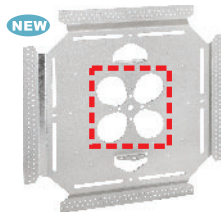
BCHS-10



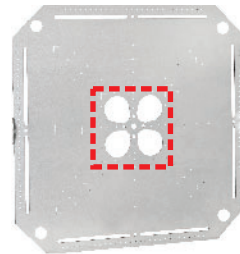
BCHS-6



BCHS-6S



BCHS-8S



BCHS-12

Updated Design with Larger Openings to pair with boxes with larger back K.O.'s such as 5" sq. boxes or 12124-50 & 12124-850!

PATENTED

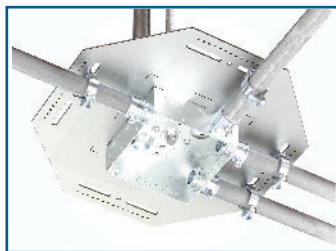
ORBIT INDUSTRIES EXCLUSIVE



Video Available On Our Website!

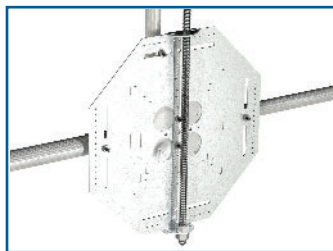
Use One Rod to Mount Multiple Boxes and Conduits

INSTALLATION



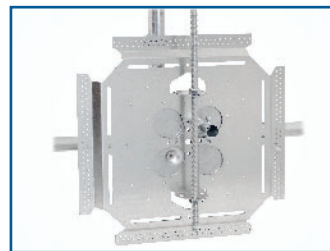
BCHS-10

Horizontally mount boxes up to 6" x 6"



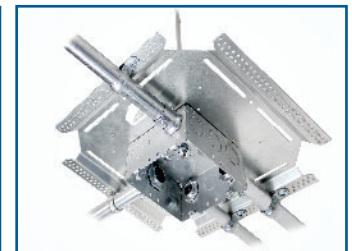
BCHS-6

Horizontally or vertically mount boxes up to 6" x 6"



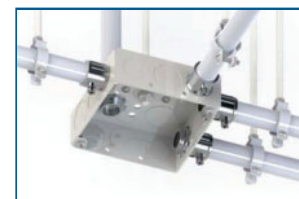
BCHS-8S

Horizontally or vertically mount boxes up to 8" x 8" and allows for the use of one-hole straps



BCHS-12

Fits multiple boxes for multi-system installations or up to 12" x 12" NEMA Enclosures



TRADITIONAL METHOD

Use one threaded rod with Orbit's BCHS Series, instead of measuring and cutting five pieces of threaded rod for traditional application.

