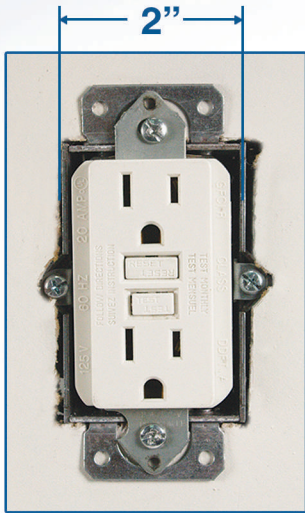
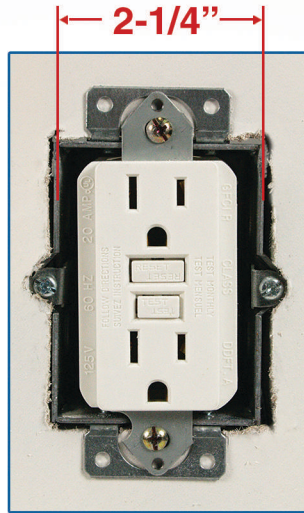


WIDE OLD-WORK SWITCH BOXES



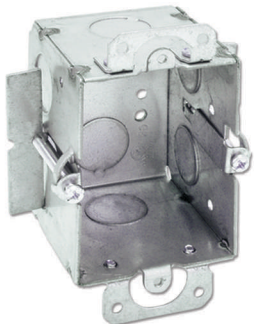
Regular Box



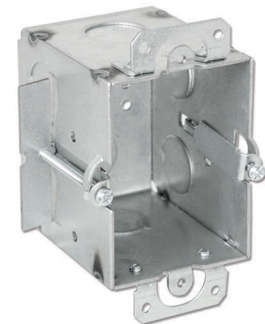
Wide Box

1/4" Wider for easy installation of GFCI and other large devices

- Non-Gangable, Wide Switch Boxes
- Must be used with Mid-Size or Oversized Wall Plate
- Material: Galvanized Steel
- **WMB-PT** pre-assembled with 10-32 Ground Screw & 7" Solid #12AWG Pigtail



TGW



TGMW

Featuring 1/2" & 3/4" MKO

7" Grounding Pigtail

NEW! WMB-PT

SBS

OWG

Cat. No.	Description	Volume	Knockouts			Std. Pkg.
			Sides	Ends	Bottom	
TGW	3" H x 2-1/4" W x 2-1/2" D	15.0 Cu. In.	4 - 1/2"	2 - 1/2"	2 - 1/2"	50
TGMW	3" H x 2-1/4" W x 2-3/4" D	18.5 Cu. In.	4 - 1/2"	2 - 1/2"	2 - 1/2"	50
WMB-PT NEW!	3" H x 2-1/4" W x 2-3/4" D	18.5 Cu. In.	4 - 1/2"	2 - MKO	2 - 1/2"	50
SBS	Switch Box Support Brackets, Bendable Tabs	-	-	-	-	100
OWG	Cut in Old-Work Clip	-	-	-	-	100