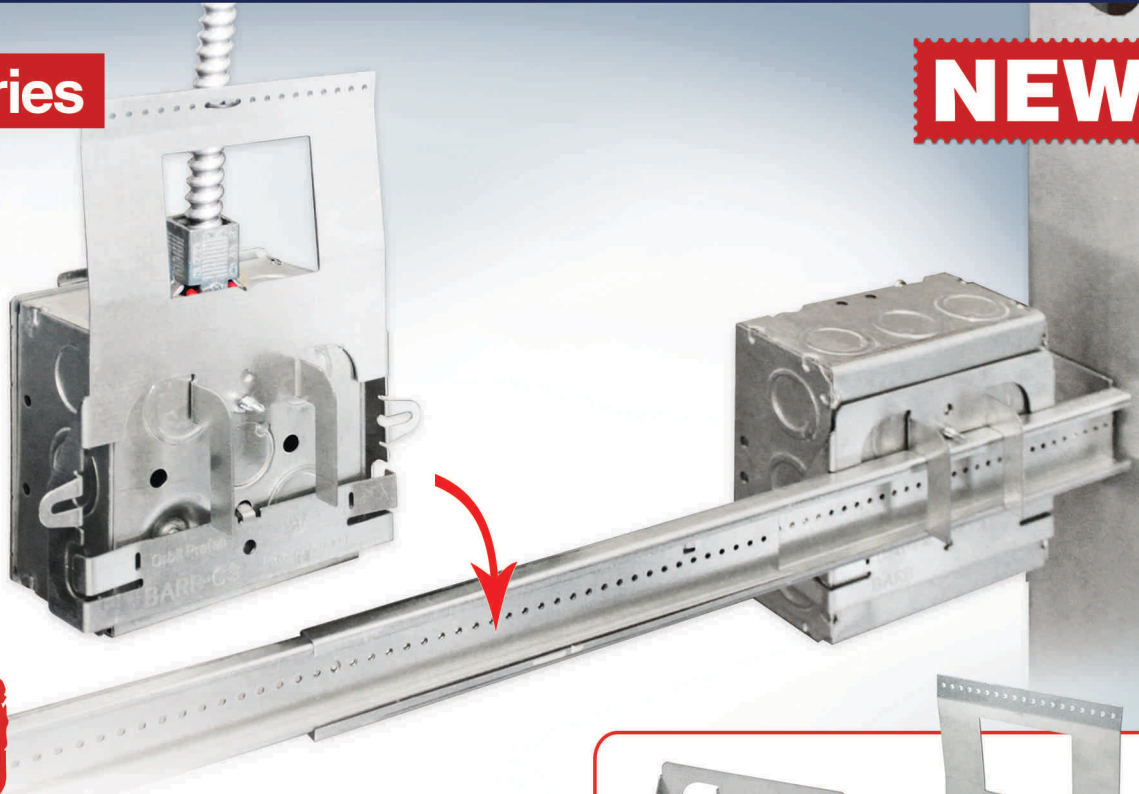


DROP-ON-BAR SLIDER BRACKET

orbit[®]
Orbit Industries, Inc.

BARB Series

NEW

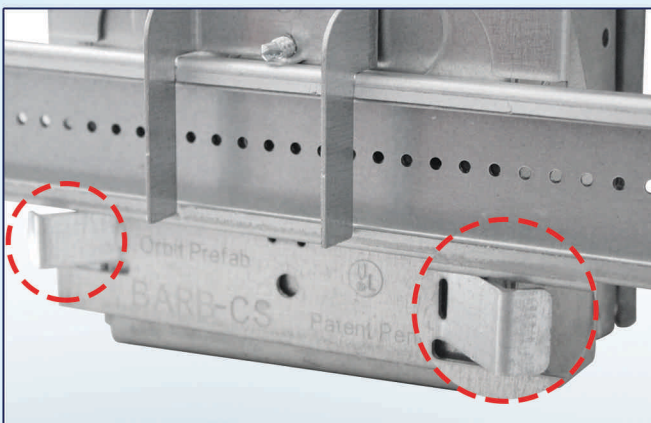


**ORBIT INDUSTRIES
EXCLUSIVE**

THE MOST EFFICIENT WAY TO INSTALL BOXES ON BAR HANGERS

BARB

BARB-CS



A BARB and box assembly can be locked onto a BHA before arriving on the job site for quick adjustment in the field.

The BARB Series allow 4" and 4-11/16" square boxes to be quickly dropped onto Orbit's Adjustable Bar Hangers (BHA) and then repositioned, even after the hangers are installed.

- » Quickly attaches to any 4" or 4-11/16" square box with just one tek screw
- » Easily drops onto an Orbit BHA-16 & BHA-24 Adjustable Bar Hanger
- » Allows for the installation of up to 2 boxes between 16" studs and 4 between 24" studs
- » The BARB-CS comes complete with cable support pin holes

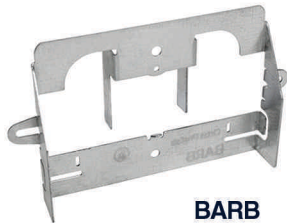


PATENT PENDING

DROP-ON-BAR SLIDER BRACKET



PATENT PENDING



BARB



BARB-CS

BHA-16



BHA-24



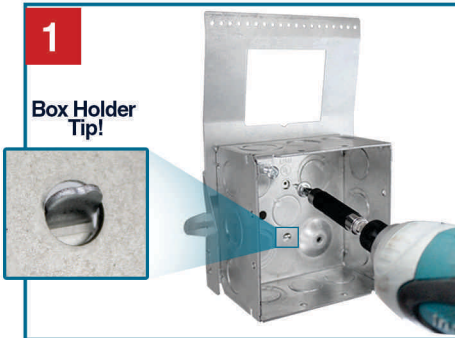
Preassembled

-OR-

In-Field

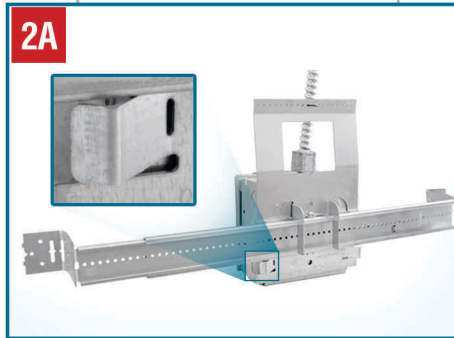
1

Box Holder Tip!



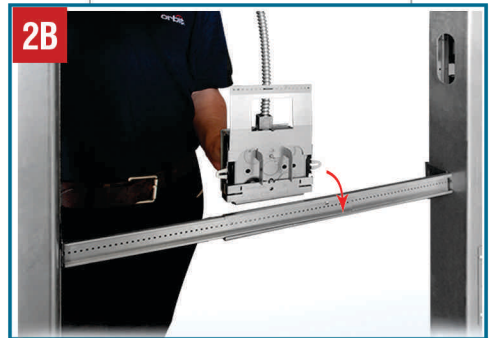
Attach to a 4" or 4-11/16" box with a single tek screw, forming a versatile box assembly

2A



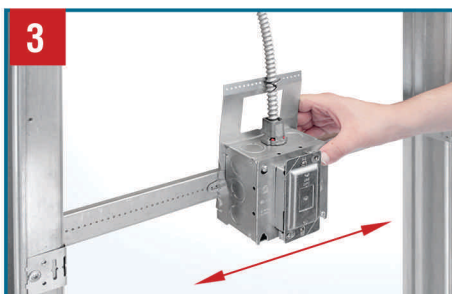
Box assemblies can be prefabricated onto a BHA before arriving to the job site, locking onto the hanger via its bendable tabs

2B



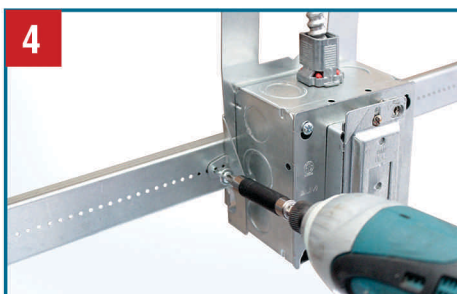
For In-Field installations, simply drop the box assembly onto a BHA before or after the hanger has been installed

3



Once the BHA is installed on studs, the box assembly can be adjusted along the hanger

4



Secure the assembly to the BHA with tek screws, setting the box in place



Multiple box assemblies can be easily added! **Up to 4 between 24" studs**

Cat. No.	Description	Std. Pkg.
BARB	Drop-On-Bar Slider Bracket	50
BARB-CS	Drop-On-Bar Slider Bracket with Cable Support Pin Holes	50
BHA-16	Up to 18" Adj. Box Bracket. Used with 1-1/2", 2-1/8" or 2-1/2" Deep Boxes	50
BHA-24	Up to 26" Adj. Box Bracket. Used with 1-1/2", 2-1/8" or 2-1/2" Deep Boxes	50