

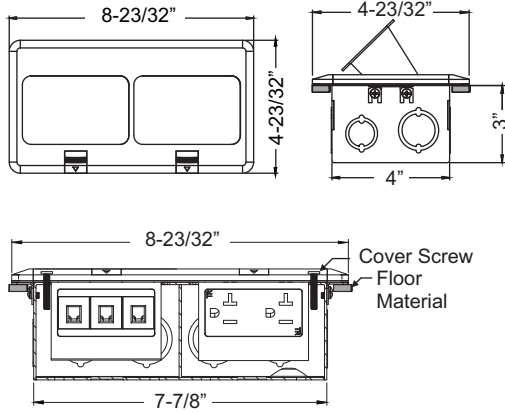


2-GANG POP-UP FLOOR BOX

Cat. No.	Side K.O.'S	Bottom K.O.'S	Cu. In.	Std. Pkg.
FLB-48DB	(6) - 1/2" & 3/4" CKO, (6) - 3/4" & 1" CKO	(6) - 1/2" & (3) - 3/4"	86.0	10

PRODUCT FEATURES

- ▶ Able to install to concrete when using wood concrete forms
- ▶ For Concrete/Floor application, see Section W (314.28 (B))



Wiring Devices

COMPATIBLE COVERS: Page G7

- Compatible only with 2 Gang Floor Box Partition



FLBPU-DD-C-BR



FLBPU-DD-C-SS



FLBPU-LL-C-BR



FLBPU-LL-C-SS

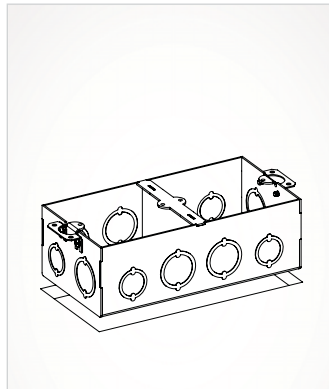


• FLBPU-DL-C-BR

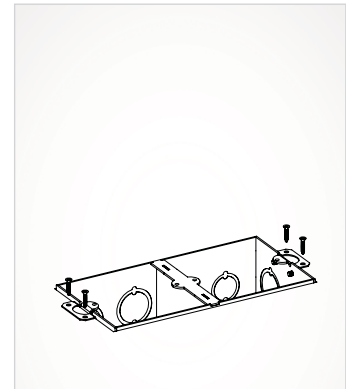


• FLBPU-DL-C-SS

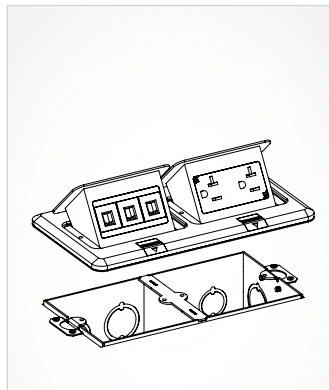
INSTALLATION



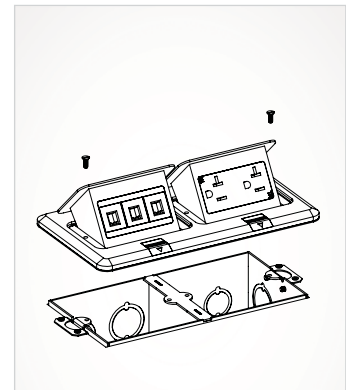
Step 1: Cut hole in finished floor.



Step 2: Mount floor box to floor with 4 wood screws.



Step 3: Wire receptacle assembly.



Step 4: Install cover using screws provided.