

F26 | Box & Conduit Support

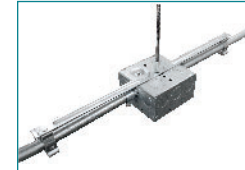


STEEL BOX/CONDUIT HANGERS

PRODUCT FEATURES

- ▶ Pre-Galvanized Steel Hanger
- ▶ Spring Steel Clamps
- ▶ Supports overhead boxes and conduit from threaded rod
- ▶ Eliminates need for offset conduit bending

Cat. No.	EMT/Rigid Size	FMC Size	MC/AC Size	Hole Size	Screw Size	Std. Pkg.
F6MB18A	-	3/8"	14/2 to 12/3	1/4", Plain	-	25
F812MB18A	1/2", 3/4"	-	-	1/4", Plain	-	25
F812MB18S	1/2", 3/4"	-	-	-	1/4"-20 X 9/16"	25
F16MB18A	1"	-	-	1/4", Plain	-	25

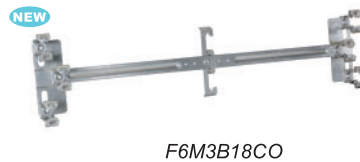


STEEL BOX/MULTI-CONDUIT TO WIRE/ROD HANGER

PRODUCT FEATURES

- ▶ Pre-Galvanized Steel Hanger & Bracket
- ▶ Spring Steel Wire/Rod Clip
- ▶ Spring Steel Clamps supports up to six (6) conduit/cable runs from both sides of the box
- ▶ Provides support for both sides of horizontal electrical box or conduit
- ▶ Greatly reduces material costs for drop wire or rods vs. traditional methods
- ▶ Eliminates need for offset conduit bending

Cat. No.	FMC Size	MC/AC Size	Rod Size	Wire Size	Std. Pkg.
F6M3B18CO NEW	3/8"	14/2 to 12/3	1/4"	#12-#8	25



F6M3B18CO INSTALLED

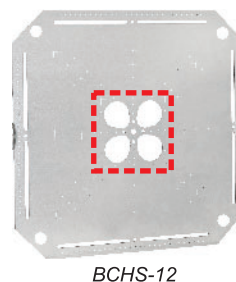
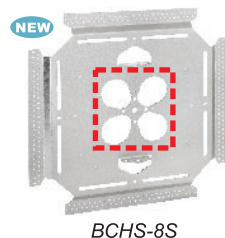
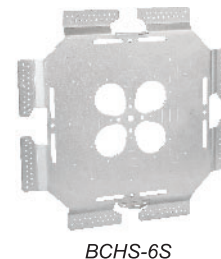
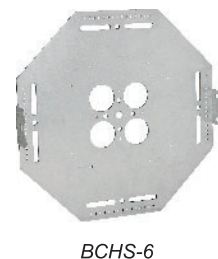
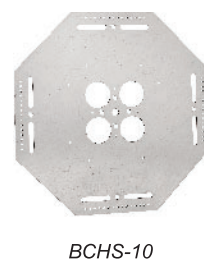
Supports up to 6 conduit/cable runs.
Compatible with 4", 4-11/16" and 5" boxes. Entire assembly supported by one threaded rod or drop wire.

BOX AND CONDUIT HANGER SUPPORT PLATES

PRODUCT FEATURES

- ▶ Support suspended boxes and multiple conduit installations with one piece of all-thread as opposed to multiple pieces of rod
- ▶ Pin holes and slots allow for use of conduit straps
- ▶ Stamped markings provide guidelines for box placement. Boxes can be placed in any location on plate.
- ▶ Pre-Galvanized 15 Gauge Steel Self-reinforcing as more conduit is added
- ▶ Easy to preassemble to save time and material
- ▶ **BCHS-6S** & **BCHS-8S** contains offset for use of one-hole straps in place of traditional pipe hangers
- ▶ **BCHS-12** pairs well with Orbit Exclusive 12124-50 & 12124-850
- ▶ Installation images found on pg. P20

Cat. No.	Description	Std. Pkg.
BCHS-10	Fits up to 6" x 6" Box or multiple smaller boxes for horizontal mounting	25
BCHS-6	Fits up to 6" x 6" Box or multiple smaller boxes for horizontal mounting and provides bent tabs for vertical mounting	10
BCHS-6S	Fits up to 8" x 8" Box or multiple smaller boxes for horizontal mounting, bent tabs for vertical mounting and offsets allow for use of one-hole straps	10
BCHS-8S NEW	Fits up to 8" x 8" Box or multiple smaller boxes for horizontal mounting, bent tabs for vertical mounting and offsets allow for use of one-hole straps	10
BCHS-12	Fits up to 12" x 12" Box or multiple smaller boxes for horizontal mounting, bent tabs for vertical mounting	5



Updated Design with Larger Openings to pair with boxes with larger back K.O.'s such as 5" sq. boxes or 12124-50 & 12124-850!

PATENTED

ORBIT INDUSTRIES EXCLUSIVE



Video Available On Our Website!

Use One Rod to Mount Multiple Boxes and Conduits

www.orbitelectric.com

