

## Easy Access Lighting Box w/ Sliding Swivel | Pg. P22, I46, J21

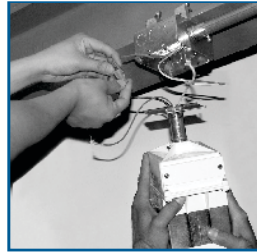
Only box UL-Listed for up to 90 lbs. of fixture load!

**50% LABOR SAVINGS**

**PATENTED**

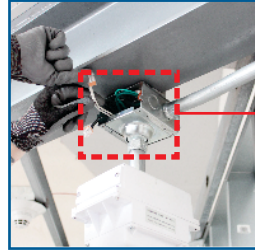


**EALBS**



**TRADITIONAL METHOD**

Requires two installers



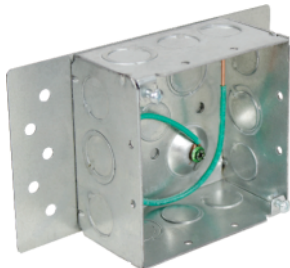
**WITH ORBIT'S EALBS**

One installer completes wiring while fixture hangs



Orbit's Easy Access Lighting Box with Sliding Swivel Cover can double productivity when hanging light fixtures. Two installers are needed when mounting traditional swivel covers: one person to hold, and another to complete the wiring. But with EALBS, just ONE installer does it all...and with both hands free for wiring! This 2014 NECA Showstopper features detachable sides and a 20° angle sliding swivel cover that fits 3/4" to 1/2" conduit (with supplied bushing). UL Rated up to 90lbs.

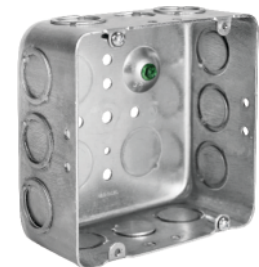
## Easy Hang Boxes | Pg. A9, A16, P21 - 22



**4SDB-BP**



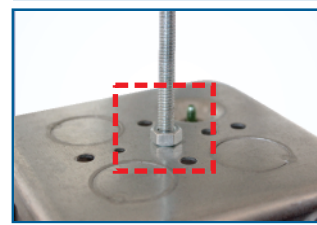
**4SDB-MKO-S** NEW



**D5SDB-CKO-S**



Mount to ceilings, walls, corrugated surfaces, or underneath counters



Secure to ceiling with just a rod and locknut  
**4SDB-MKO-S 3/8" ROD**  
**D5SDB-CKO-S 1/4" ROD**

Easy Hang Boxes have been developed through feedback from the field and installers looking to save time or simplify unique installations. The 4SDB-BP can be wired ahead of shipment to jobsite and installed without having to access the inside of the junction box. D5SDB-CKO-S have the back-center K.O. replaced with through hole eliminating need for washer or punching back-center K.O. when mounting boxes in suspended application.