

4" CEILING FAN & LIGHT FIXTURE SUPPORT PRODUCTS

WITH NON-METALLIC (NM) SHEATHED CABLE CONNECTOR

PRODUCT FEATURES

- ▶ NM Clamp installed in 1-1/2" & 2-1/8" Boxes
- ▶ Easy-to-follow Instruction Sheet
- ▶ Complies with NEC 314.27 (A)(C)(D) for up to 70 lbs. of ceiling fan load or 70 lbs. of fixture load (for more information see pg. W18)

NOTE

- ▶ Hardware Pack include variety of fasteners for all installation types
- ▶ Replaceable MC Clamp supplied in Hardware Pack

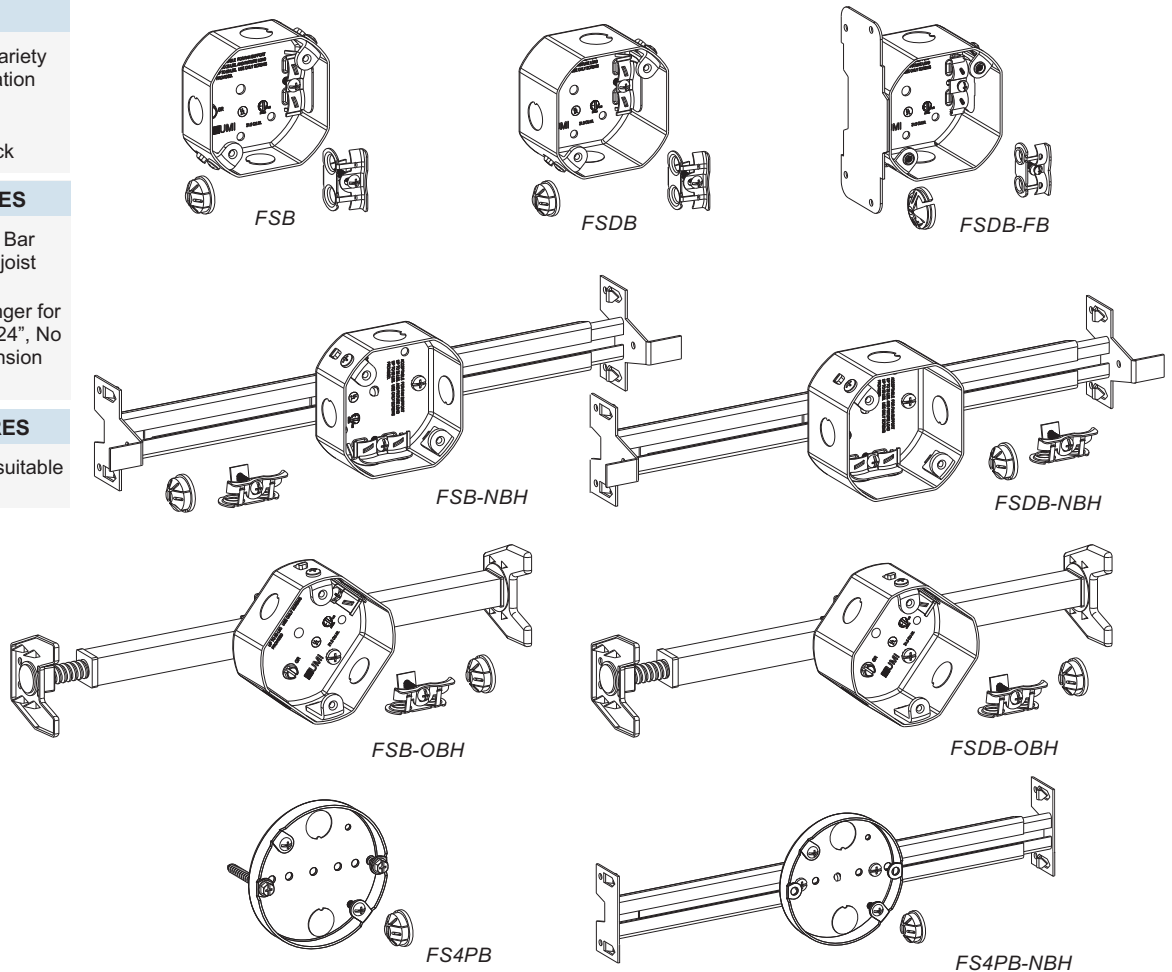
BAR HANGER FEATURES

- ▶ **NBH:** New Construction Bar Hanger slides apart to fit joist spacing from 16" to 24"
- ▶ **OBH:** Old Work Bar Hanger for joist spacing from 16" to 24", No tools necessary for expansion of the bar

BX/MC CLAMP FEATURES

- ▶ All MC series boxes are suitable for use with MCI-A Type

Cat. No.	Depth	Clamp Type	Bracket, Setback or Expansion	Knockouts	Cu. In.	Std. Pkg.
FSB	1-1/2"	BX/MC, NM	-	3 - 1/2", 2 - Loom	15.5	20
FSDB	2-1/8"	BX/MC, NM	-	3 - 1/2", 2 - Loom	21.5	20
FSDB-FB	2-1/8"	BX/MC, NM	FB, 1/2"	2 - 1/2", 2 - Loom	21.5	20
FSB-NBH	1-1/2"	BX/MC, NM	NBH, 16" to 24"	3 - 1/2", 2 - Loom	15.5	10
FSDB-NBH	2-1/8"	BX/MC, NM	NBH, 16" to 24"	3 - 1/2", 2 - Loom	21.5	10
FSB-OBH	1-1/2"	BX/MC, NM	OBH, 16" to 24"	3 - 1/2", 2 - Loom	15.5	10
FSDB-OBH	2-1/8"	BX/MC, NM	OBH, 16" to 24"	3 - 1/2", 2 - Loom	21.5	10
FS4PB	1/2"	-	-	2 - 1/2"	6.0	20
FS4PB-NBH	1/2"	-	NBH, 16" to 24"	2 - 1/2"	6.0	10



FAN SUPPORT BAR HANGERS

Cat. No.	Description	Std. Pkg.
FS-NBH	16" to 24" Adjustable New Construction Bar Hanger for use with Fan Support Boxes	10
FS-OBH	16" to 24" Adjustable Old Work Bar Hanger for use with Fan Support Boxes	10

