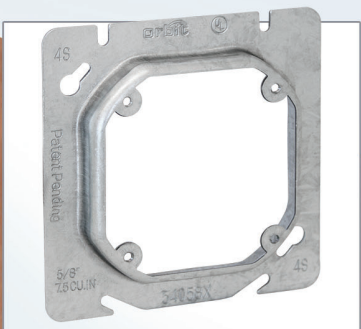


SQUARE-TO-OCTAGON FIXTURE RINGS



540X SERIES
Sizes available from
5/8" to 1-1/4" Deep

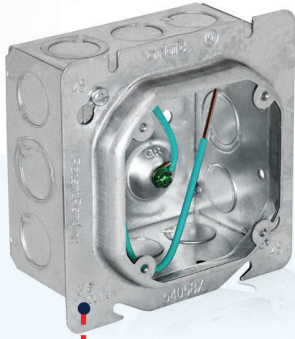
EC&M
Product of the Year
2023 Category Winner



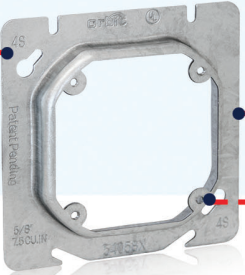
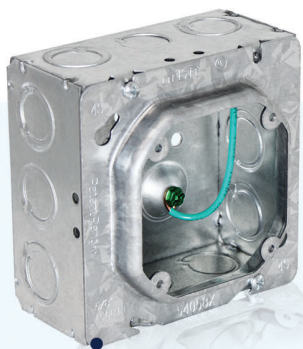
****UL Listed weight rating up to 50 lbs.**

TURN ANY 4" OR 4-11/16" SQUARE BOX INTO A 40 BOX WITH ONE RING!

4" Box



4-11/16" Box



#8-32 Threads

Universal 4" & 4-11/16" Square to 4" Octagon Fixture Covers:

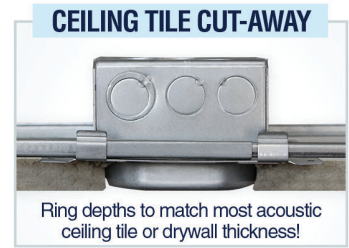
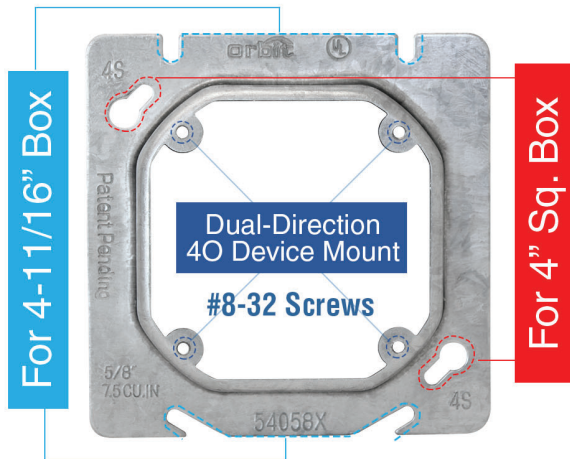
- Transitions 4" and 4-11/16" square boxes into 40 (3-1/2" O.C.) opening
- Four dual-direction mounting tabs with #8-32 Threads - install fixtures in any orientation
- Ideal for light fixtures, LED drivers, and other 40-compatible devices

540X Ring

PATENTED

***when installed on Orbit 4" & 4-11/16" square box with "FB" bracket (shown above)*

SQUARE-TO-OCTAGON FIXTURE RINGS



- Mounts 4" or 4-11/16" square boxes
- 4" octagon opening (3-1/2" O.C.)
- **For fixture luminaire support of 50 lbs. or less
- 16 Gauge Sheet Steel

Cat. No.	Ring Depth	Cu.In.	Std. Pkg.
54058X	5/8"	7.5	50
54075X	3/4"	8.8	50
54100X	1"	11.8	25
54125X	1-1/4"	14.5	25

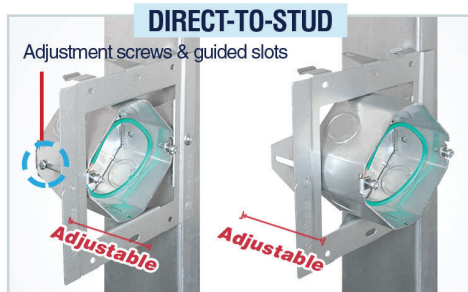
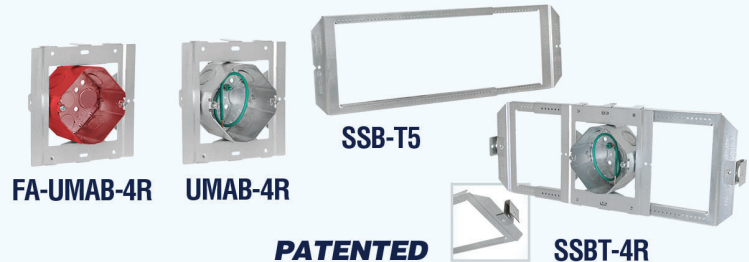
NEW STANDARD
ALL FIXTURE RINGS ARE NOW DUAL DIRECTION

UL UNIVERSAL MOUNTING

ADJUSTABLE 40 BOXES



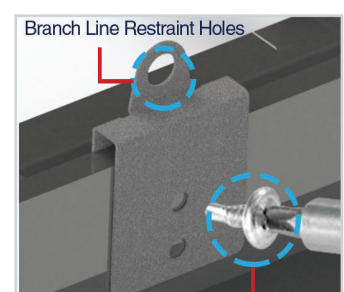
- 4" octagon box, 2-1/8" deep
- Integral adapter mounts direct to stud - or snaps onto SSB-T5 or SSB-TBAR without tools
- Adjust box from Flush to 1-1/2" deep (set at 5/8" raise)
- Lock box at desired depth via (2) outer-facing screws
- SSB-T5/ SSBT-4R bracket adjust from 15" to 25"
- Slide box along bracket, set in place with (1) Tek screw
- UMAB-4R includes 10" pigtail
- SSBT-4R includes holes for branch line restraints



Guided slots on each side allow the box to be easily adjusted by simply loosening the screws



SSBT-4R Installed in Drop Ceiling w/ Branch Line Restraint



Tek screw provisions on each clip comply with NEC 314.23 (D) (1)

Cat. No.	Description	Std. Pkg.
UMAB-4R	4" (40), 2-1/8" Deep Box w/ 10" PT, 21.1 Cu. In., Adjustable up to 1-1/2". Adapter included	20
FA-UMAB-4R	Red 4" (40), 2-1/8" Deep Box, 21.1 Cu. In., Adjustable up to 1-1/2". Adapter included	20
SSB-T5	Simple Support Bracket adjusts from 15" to 25" for mounting 4", 4-11/16" & 5" Sq. boxes between studs or hard-lid ceiling joists	25
SSBT-4R	Preassembled SSB-TBAR with UMAB-4R	20