

Orbit's NEMA Enclosures feature code gauge steel, mounting holes and a variety of KO configurations to handle various applications including data communication network systems. Enclosures include NEMA Type 1 and Type 3R; each designed as the ideal way of protecting equipment and hazardous parts from the elements.

### NEMA Type 1 and Type 3R

#### MATERIALS:

- Made from 16 Gauge Steel

#### FINISH:

- ANSI 61 Gray Polyester Powder Paint
- Hi-Gloss Smoke Gray Powder Coated inside and outside.
- Other finished available upon special request

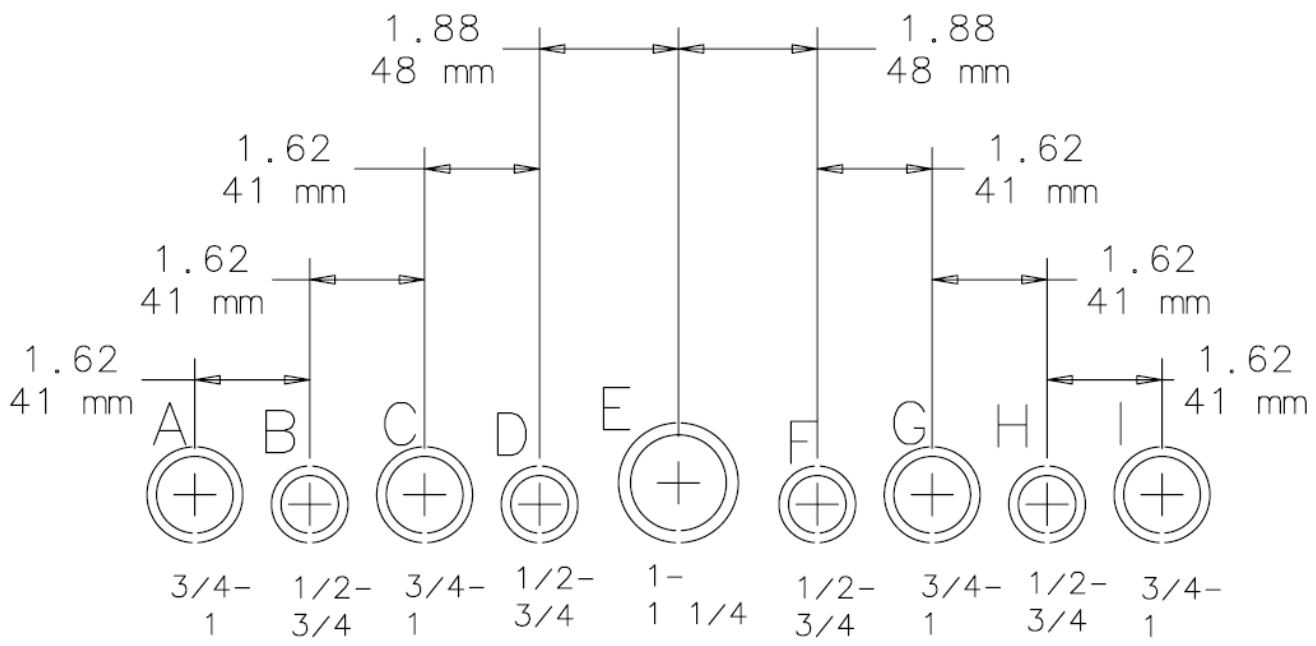
#### KNOCK-OUT:

- Standard CKOs featured on all sides
- Enclosures also available without knockouts

#### COVERS:

- Flat covers are provided with key holes for rapid removal from box without removing screws.
- Flush mount covers also available.

## NEMA Type 1 and Type 3R Knock Out Patterns





## NEMA TYPE 1 SCREW COVER ENCLOSURES WITH K.O.

### PRODUCT FEATURES

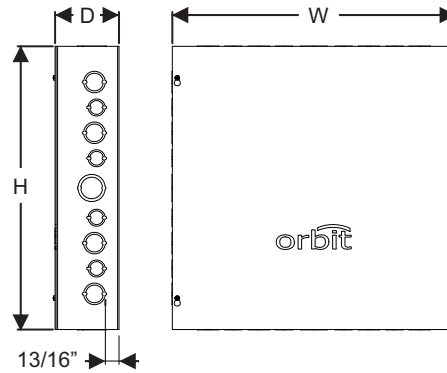
- ▶ ANSI 61 Gray Polyester Powder Paint Finish inside and out
- ▶ 16 Gauge Steel or Plated Steel
- ▶ Mounting holes on back of box



NEMA Enclosures

Cat. No.	Enclosure Size (Inches)			K.O. Pattern		Std. Pkg.
	Width (W)	Height (H)	Depth (D)	A (Top & Bottom)	B (Left & Right)	
444	4	4	4	B-C	B-C	6
464	4	6	4	B-C	B-C-D	6
664	6	6	4	B-C-D	B-C-D	6
666	6	6	6	B-C-D	B-C-D	6
884	8	8	4	F-G-H-I	F-G-H-I	6
886	8	8	6	F-G-H-I	F-G-H-I	4
10104	10	10	4	C-D-E-F-G	F-G-H-I	4
10106	10	10	6	C-D-E-F-G	F-G-H-I	4
12124	12	12	4	C-D-E-F-G	C-D-E-F-G	2
12126	12	12	6	C-D-E-F-G	C-D-E-F-G	2
12128	12	12	8	C-D-E-F-G	C-D-E-F-G	1
12186	12	18	6	C-D-E-F-G	A-B-C-D-E-F-G-H-I	1
16164	16	16	4	B-C-D-E-F-G-H	B-C-D-E-F-G-H	1
16166	16	16	6	B-C-D-E-F-G-H	B-C-D-E-F-G-H	1
16168	16	16	8	B-C-D-E-F-G-H	B-C-D-E-F-G-H	1
18184	18	18	4	A-B-C-D-E-F-G-H-I	A-B-C-D-E-F-G-H-I	1
18186	18	18	6	A-B-C-D-E-F-G-H-I	A-B-C-D-E-F-G-H-I	1
18188	18	18	8	A-B-C-D-E-F-G-H-I	A-B-C-D-E-F-G-H-I	1
24244	24	24	4	A-B-C-D-E-F-G-H-I	A-B-C-D-E-F-G-H-I	1
24246	24	24	6	A-B-C-D-E-F-G-H-I	A-B-C-D-E-F-G-H-I	1
24248	24	24	8	A-B-C-D-E-F-G-H-I	A-B-C-D-E-F-G-H-I	1

Subject to change without notice.



## NEMA TYPE 1 SCREW COVER ENCLOSURES WITHOUT K.O.

### PRODUCT FEATURES

- ▶ ANSI 61 Gray Polyester Powder Paint Finish inside and out
- ▶ 16 Gauge Steel or Plated Steel
- ▶ Mounting holes on back of box



Cat. No.	Enclosure Size (Inches)			Std. Pkg.
	Width (W)	Height (H)	Depth (D)	
444NK	4	4	4	6
464NK	4	6	4	6
664NK	6	6	4	6
666NK	6	6	6	6
884NK	8	8	4	6
886NK	8	8	6	4
10104NK	10	10	4	4
10106NK	10	10	6	4
12124NK	12	12	4	2
12126NK	12	12	6	2
12128NK	12	12	8	1
12186NK	12	18	6	1
16164NK	16	16	4	1
16166NK	16	16	6	1
16168NK	16	16	8	1
18184NK	18	18	4	1
18186NK	18	18	6	1
18188NK	18	18	8	1
24244NK	24	24	4	1
24246NK	24	24	6	1
24248NK	24	24	8	1

Subject to change without notice.

Note: Other size & finishes are available by special order upon request.  
Contact Orbit Representative for more information.

## NEMA 3R SCREW COVER ENCLOSURES WITH K.O.

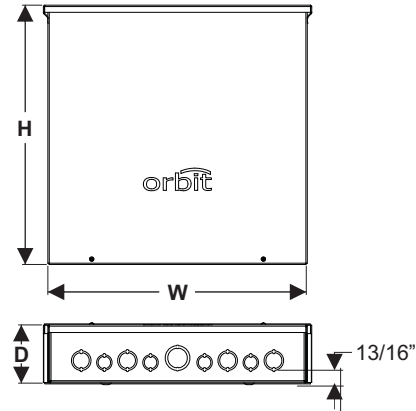
### PRODUCT FEATURES

- ▶ ANSI 61 Gray Polyester Powder Paint Finish inside and out
- ▶ 16 Gauge Steel or Plated Steel
- ▶ Mounting holes on back of box
- ▶ With Padlock Hasp



Cat. No.	Body Style	Enclosure Size (Inches)			K.O. Pattern (Bottom)	Std. Pkg.
		Width (W)	Height (H)	Depth (D)		
444R	A	4	4	4	B-C	6
464R	A	4	6	4	B-C	6
664R	A	6	6	4	B-C-D	6
666R	A	6	6	6	B-C-D	6
884R	A	8	8	4	F-G-H-I	6
886R	A	8	8	6	F-G-H-I	4
10104R	A	10	10	4	C-D-E-F-G	4
10106R	A	10	10	6	C-D-E-F-G	4
12124R	A	12	12	4	C-D-E-F-G	2
12126R	A	12	12	6	C-D-E-F-G	2
12128R	A	12	12	8	C-D-E-F-G	1
12186R	A	12	18	6	C-D-E-F-G	1
16164R	B	16	16	4	B-C-D-E-F-G-H	1
16166R	B	16	16	6	B-C-D-E-F-G-H	1
16168R	B	16	16	8	B-C-D-E-F-G-H	1
18184R	B	18	18	4	A-B-C-D-E-F-G-H-I	1
18186R	B	18	18	6	A-B-C-D-E-F-G-H-I	1
18188R	B	18	18	8	A-B-C-D-E-F-G-H-I	1
24244R	B	24	24	4	A-B-C-D-E-F-G-H-I	1
24246R	C	24	24	6	A-B-C-D-E-F-G-H-I	1
24248R	C	24	24	8	A-B-C-D-E-F-G-H-I	1

Subject to change without notice.



## NEMA 3R SCREW COVER ENCLOSURES WITHOUT K.O.

### PRODUCT FEATURES

- ▶ ANSI 61 Gray Polyester Powder Paint Finish inside and out
- ▶ 16 Gauge Steel or Plated Steel
- ▶ Mounting holes on back of box
- ▶ With Padlock Hasp



Cat. No.	Body Style	Enclosure Size (Inches)			Std. Pkg.
		Width (W)	Height (H)	Depth (D)	
444RNK	A	4	4	4	6
464RNK	A	4	6	4	6
664RNK	A	6	6	4	6
666RNK	A	6	6	6	6
884RNK	A	8	8	4	6
886RNK	A	8	8	6	4
10104RNK	A	10	10	4	4
10106RNK	A	10	10	6	4
12124RNK	A	12	12	4	2
12126RNK	A	12	12	6	2
12128RNK	A	12	12	8	1
12186RNK	A	12	18	6	1
16164RNK	B	16	16	4	1
16166RNK	B	16	16	6	1
16168RNK	B	16	16	8	1
18184RNK	B	18	18	4	1
18186RNK	B	18	18	6	1
18188RNK	B	18	18	8	1
24244RNK	B	24	24	4	1
24246RNK	C	24	24	6	1
24248RNK	C	24	24	8	1

Subject to change without notice.



File E331152



Note: Other size & finishes are available by special order upon request.  
Contact Orbit Representative for more information.

[www.orbitelectric.com](http://www.orbitelectric.com)



# B3 | Specialty Enclosures



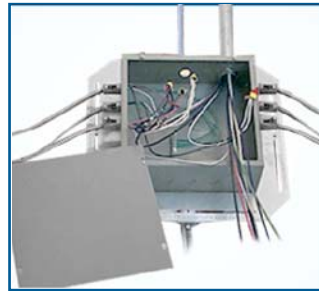
NEMA Enclosures

## NEMA TYPE1 12" X 12" ENCLOSURE WITH SPECIALTY K.O.'S

### PRODUCT FEATURES

- ▶ ANSI 61 Gray Polyester Powder Paint Finish inside and out
- ▶ 16 Gauge Steel or Plated Steel
- ▶ Mounting holes on back of box
- ▶ **12124-50:** 1" distance from back of box to bottom of K.O.
- ▶ **12124-850:** 3/8" distance from back of box to bottom of K.O.

Cat. No.	Enclosure Size (Inches)			Knockouts		Std. Pkg.
	Width	Height	Depth	Sides	Bottom	
<b>12124-50</b> <small>NEW</small>	12"	12"	4"	20 - 1/2"	1 - 1" & 1-1/4" CKO	2
<b>12124-850</b> <small>NEW</small>	12"	12"	4"	32 - 1/2"	1 - 1" & 1-1/4" CKO	2



Shown installed to BCHS-12, MC cables connected to 1/2" K.O.s



Shown fabricated to lighting panel, used as pull box



Shown fabricated with pre-wired lighting relay devices, ready-to-install

## TRUE 5" SQUARE BOXES

### WELDED

### 3-1/4" DEEP

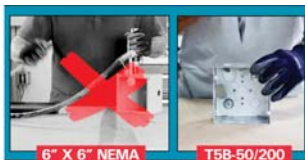
71.8 Cu. In.

### WITH RAISED GROUND EMBOSS

### PRODUCT FEATURES

- ▶ More than double the capacity compared to 4" square boxes
- ▶ 16 Gauge Sheet Steel
- ▶ Pair 4" rings with 5" box via UMA-LVBS bracket or T5R Reducer

**Video Available On Our Website!** **PATENTED**

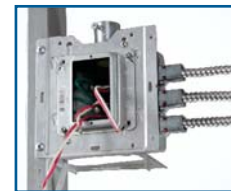


T5B-50/200 can replace 6" x 6" NEMA enclosures as a go-to solution for "home run" boxes! (No need to manually punch KOs)

Cat. No.	Enclosure Size (Inches)			Knockouts		Std. Pkg.
	Width	Height	Depth	Sides	Bottom	
<b>T5B-50/200</b>	5	5	3 - 1/4	8 - 1/2"	1 - 1/2"	12
				2 - 1" to 2" CKO	1 - 1/2" & 3/4" MKO	
				4 - 1/2" & 3/4" CKO	1 - 3/4" & 1" MKO	



T5B-50/200 shown installed to BCHS-6S in open ceiling, used as a home run box



Shown installed to UMA-LVBS\* attached direct-to-stud, used as a home run box  
(\* Permits use of 4" rings with 5" box)

**PROFAB**  
ENGINEERED ELECTRICAL SYSTEMS

For more information on Orbit's Engineered Electrical Systems. Email: [info@orbitprofab.com](mailto:info@orbitprofab.com)



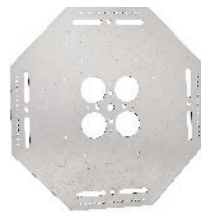
**ORBIT INDUSTRIES EXCLUSIVE**

## BOX AND CONDUIT HANGER SUPPORT PLATES

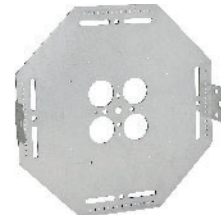
### PRODUCT FEATURES

- ▶ Support suspended boxes and multiple conduit installations with one piece of all-thread as opposed to multiple pieces of rod
- ▶ Pin holes and slots allow for use of conduit straps
- ▶ Stamped markings provide guidelines for box placement. Boxes can be placed in any location on plate.
- ▶ Pre-Galvanized 15 Gauge Steel Self-reinforcing as more conduit is added
- ▶ Easy to preassemble to save time and material
- ▶ **BCHS-6S & BCCHS-8S** contains offset for use of one-hole straps in place of traditional pipe hangers
- ▶ **BCCHS-12** pairs well with Orbit Exclusive 12124-50 & 12124-850

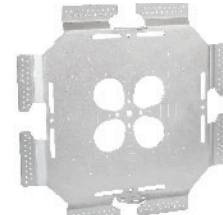
Cat. No.	Description	Std. Pkg.
<b>BCCHS-10</b>	Fits up to 6" x 6" Box or multiple smaller boxes for horizontal mounting	25
<b>BCCHS-6</b>	Fits up to 6" x 6" Box or multiple smaller boxes for horizontal mounting and provides bent tabs for vertical mounting	10
<b>BCCHS-6S</b>	Fits up to 8" x 8" Box or multiple smaller boxes for horizontal mounting, bent tabs for vertical mounting and offsets allow for use of one-hole straps	10
<b>BCCHS-8S</b> <small>NEW</small>	Fits up to 8" x 8" Box or multiple smaller boxes for horizontal mounting, bent tabs for vertical mounting and offsets allow for use of one-hole straps	10
<b>BCCHS-12</b>	Fits up to 12" x 12" Box or multiple smaller boxes for horizontal mounting, bent tabs for vertical mounting	5



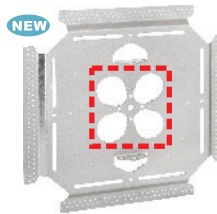
BCCHS-10



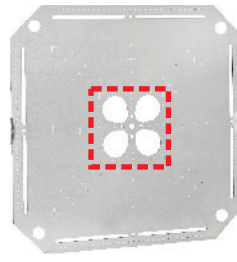
BCCHS-6



BCCHS-6S



BCCHS-8S



BCCHS-12

Updated Design with Larger Openings to pair with boxes with larger back K.O.'s such as 5" sq. boxes or 12124-50 & 12124-850!

**PATENTED**

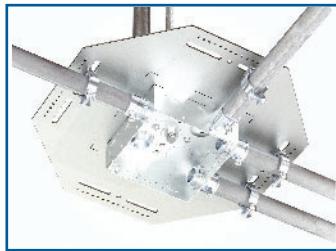
**ORBIT INDUSTRIES EXCLUSIVE**



Video Available On Our Website!

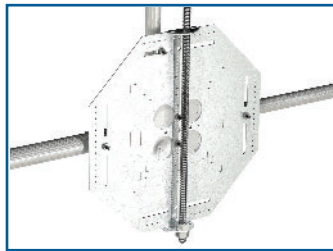
## Use One Rod to Mount Multiple Boxes and Conduits

### INSTALLATION



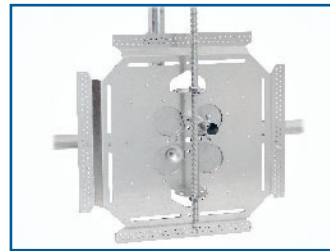
**BCCHS-10**

Horizontally mount boxes up to 6" x 6"



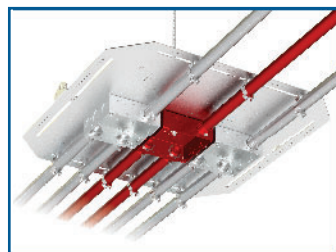
**BCCHS-6**

Horizontally or vertically mount boxes up to 6" x 6"



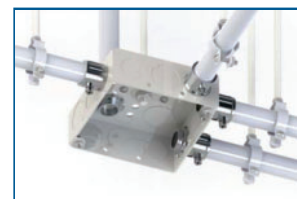
**BCCHS-8S**

Horizontally or vertically mount boxes up to 8" x 8" and allows for the use of one-hole straps



**BCCHS-12**

Fits multiple boxes for multi-system installations or up to 12" x 12" NEMA Enclosures



**TRADITIONAL METHOD**

Use one threaded rod with Orbit's BCCHS Series, instead of measuring and cutting five pieces of threaded rod for traditional application.



# B5 | Service Enclosures



## SINGLE RESIDENCE SERVICE ENCLOSURES

### PRODUCT FEATURES

- ▶ 18 GA Galvanized Steel
- ▶ Captive Cover Screws
- ▶ Screw/Nail holes on sides
- ▶ Open back to simplify splitter mounting and connection before installation of service box

Cat. No.	Features	Dimension (Excluding Bracket)				Std. Color	Std. Pkg.
		Width	Height	Depth	Cu. In.		
UM900	Blank	3-3/4"	7"	2"	52.5	Beige	20
UM900-TV	With embossed "TELEVISION" text	3-3/4"	7"	2"	52.5	Beige	20
UM900-PH	With embossed "PHONE" text	3-3/4"	7"	2"	52.5	Beige	20
UM1020-TV	With embossed "TELEVISION" text	14-7/8"	4-5/8"	1-5/8"	111.8	Beige	10
UM1020-PH	With embossed "TELEPHONE" text & protector bracket	14-7/8"	4-5/8"	2-7/8"	197.8	Beige	10



UM900



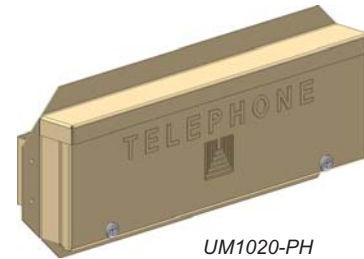
UM900-TV



UM900-PH



UM1020-TV



UM1020-PH

## MODULAR INTERFACE SERVICE ENCLOSURES

### PRODUCT FEATURES

- ▶ 18 GA Galvanized Steel
- ▶ 2 Captive Cover Screws
- ▶ 9 screw/nail holes on sides
- ▶ Plywood back to simplify protector mounting and connection before installation of service box

Cat. No.	Description	Dimension (Excluding Bracket)				Std. Color	Std. Pkg.
		Width	Height	Depth	Cu. In.		
UM1100-TV	With embossed "TELEVISION" text & Plywood back bracket	14-7/8"	11"	4-7/8"	797.6	Beige	5
UM1100-PH-GB	With embossed "TELEPHONE" text & Plywood back bracket <b>With Installed Ground Bar</b>	14-7/8"	11"	4-7/8"	797.6	Beige	5



UM1100-TV



UM1100-PH-GB

## COMMUNICATIONS / FIBER OPTICS SERVICE ENCLOSURES

### PRODUCT FEATURES

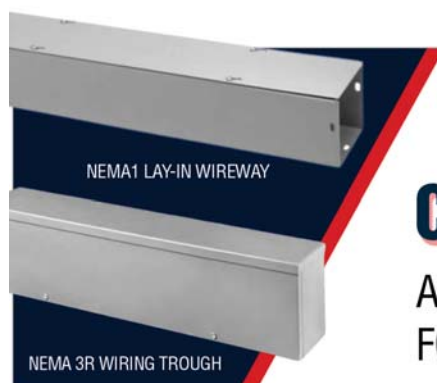
- ▶ 18 GA Galvanized Steel
- ▶ 4 Captive Cover Screws
- ▶ 24 screw/nail holes on sides
- ▶ Plywood back to simplify protector mounting and connection before installation of service box
- ▶ Plywood back bracket & grounding lug assembly
- ▶ The UM1400D is ETL listed according to UL standard UL514A and designed to meet NEMA 3R specifications

Cat. No.	Description	Dimension (Excluding Bracket)				Std. Color	Pkg.
		Width	Height	Depth	Cu. In.		
UM1400D	With embossed "COMMUNICATIONS"	14-7/8"	32"	6"	2856	Beige	1



UM1400D

NEMA Enclosures



## NEMA 1 & 3R WIREWAY

### COMING Q4 2023

A SAFE & ORGANIZED SOLUTION FOR CABLE MANAGEMENT!



END CAPS

CONNECTORS



File 3033655

[www.orbitelectric.com](http://www.orbitelectric.com)

